

## Archive:PastelImage

### Contents

1 Summary .....	2
2 At a glance: Advantages .....	2
3 Where do I find PastelImage? .....	2
4 How do I use PastelImage? (Step-by-step) .....	2
5 Features of PastelImage .....	3
5.1 Additional data .....	3
5.2 Further editing of images .....	3
6 Administration .....	4
6.1 How can I adapt PastelImage? .....	4
6.2 Which rights are needed to use PastelImage? .....	4
6.3 Additional system requirements .....	4
6.4 Browser compatibility .....	4
6.5 Troubleshooting .....	5

## Summary

---

The package **PastelImage** for BlueSpice allows users to include images in an article, either via Drag&Drop, or by copying it from the clipboard.

## At a glance: Advantages

---

- Intuitive use
- No complicated code necessary
- Various possibilities for the user

## Where do I find PastelImage?

---

**PastelImage** is integrated in the edit mode of the wiki. Every time an image is pasted or dropped into one of the two editors, **PastelImage** is automatically loaded and provides you a special window to enter further data.

## How do I use PastelImage? (Step-by-step)

---

**Note:** Please see the entry *Technical background* for system requirements and compatibility!

### Option 1: Via Drag & drop

**Step 1:** Open the respective wiki article in edit mode. Choose either the **WYSIWYG editor** or the wikicode view.

**Step 2:** Open your Explorer and choose the picture you want to add to your article.

**Step 3:** Drag and drop the picture into your editor window. A separate window will pop up where you can enter additional information and credentials.

### Option 2: Via Copy & Paste

**Step 1:** Open the respective wiki article in edit mode. Choose either view.

**Step 2:** Open your Explorer and copy the image you want to add. Alternatively you can also press the screenshot key to save your current screen to the clipboard.

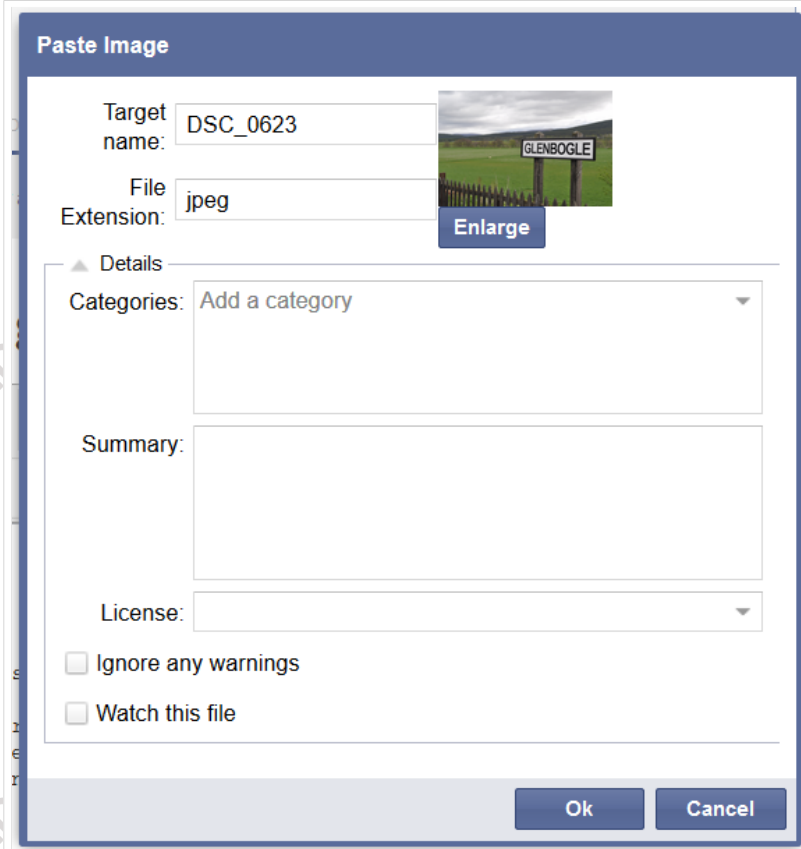
**Step 3:** Move your mouse cursor to the spot in the editor where you want to insert the image and press `ctrl+v`. You can now also enter additional information in a separate pop-up window.

## Features of PastelImage

### Additional data

When inserting the image, a pop-up window appears, allowing you to add the following information to the image:

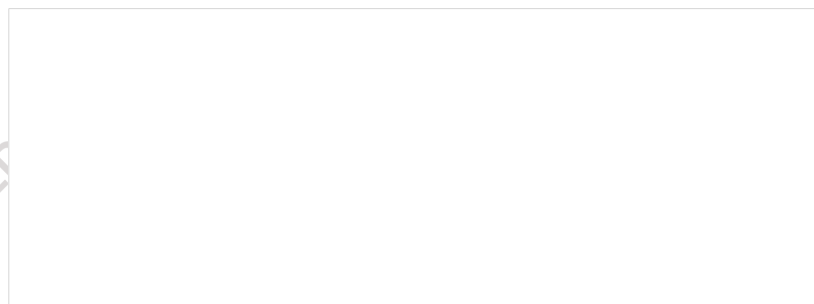
- The **categories** the image can be found in
- A **summary description** that will appear on the file page of the image
- The **license** the image is under. Note: make sure that you only upload images you are allowed to!
- Furthermore you can place the image on a **watch list**, so you will always be informed about future changes of the image.



Screenshot: Adding additional data to the inserted image


### Further editing of images

After inserting an image with **PastelImage**, you can of course modify it further (resizing, adding alt-text or links, etc.) via the normal functions of your chosen editor.



Insert image

Filter: 18122012054.jpeg Upload

Filename	File size	Recent changes
 18122012054.jpeg	0 bytes	04.02.2016 13:52

Details

Filename: 18122012054.jpeg

Display text:

Decoration: ☒ none ☐ thumbnail ☐ frame ☐ border

Adjustment: ☒ none ☐ left ☐ center ☐ right

Link:  ☐ No link

Size (w x h): 3264 x 1836

Alternative text:

Ok Cancel

Screenshot: Further editing of an inserted image

## Administration

### How can I adapt PastelImage?

Administrators can change the following settings in the preference tab *PastelImage*:

- **Default File Extension if none provided**
- **Activate Java Applet** (This setting can also be activated or deactivated by the user in the personal user settings under the tab *BlueSpice*)

### Which rights are needed to use PastelImage?

To use **PastelImage**, users need editing rights in the respective namespace. Furthermore, rights to import new images (upload, reupload, reupload-shared) are also necessary.

### Additional system requirements

**PastelImage** uses Java for the "Copy & Paste" functionality. So for using this feature, Java 1.7 or higher is required. Please keep your Java version up-to-date.

### Browser compatibility

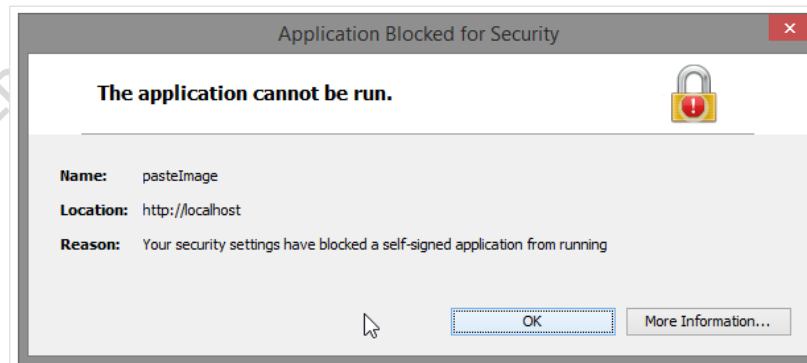
**PastelImage** is tested and ready-to-use for

- Firefox version 22 and higher
- Internet Explorer version 9 and higher
- Chrome version 13 and higher

**Please note:** Chrome stopped supporting Java from version 43, so "Copy & Paste" is also not supported anymore. Other features however are not affected.

## Troubleshooting

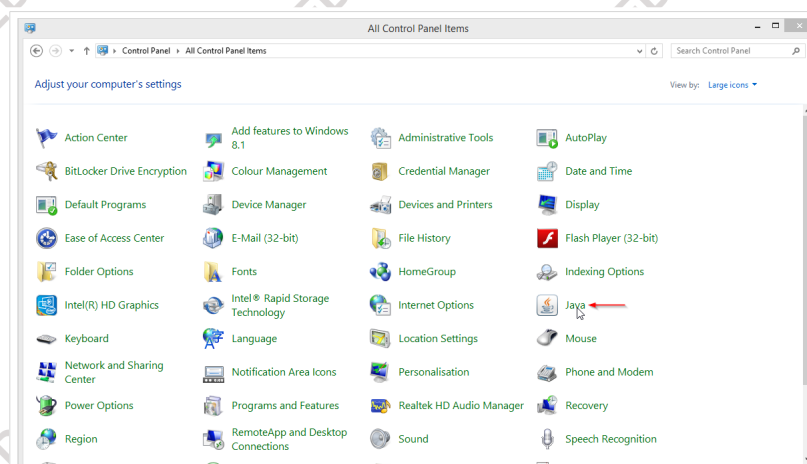
- **Application blocked for security reasons**



Screenshot: Security Blocking Error

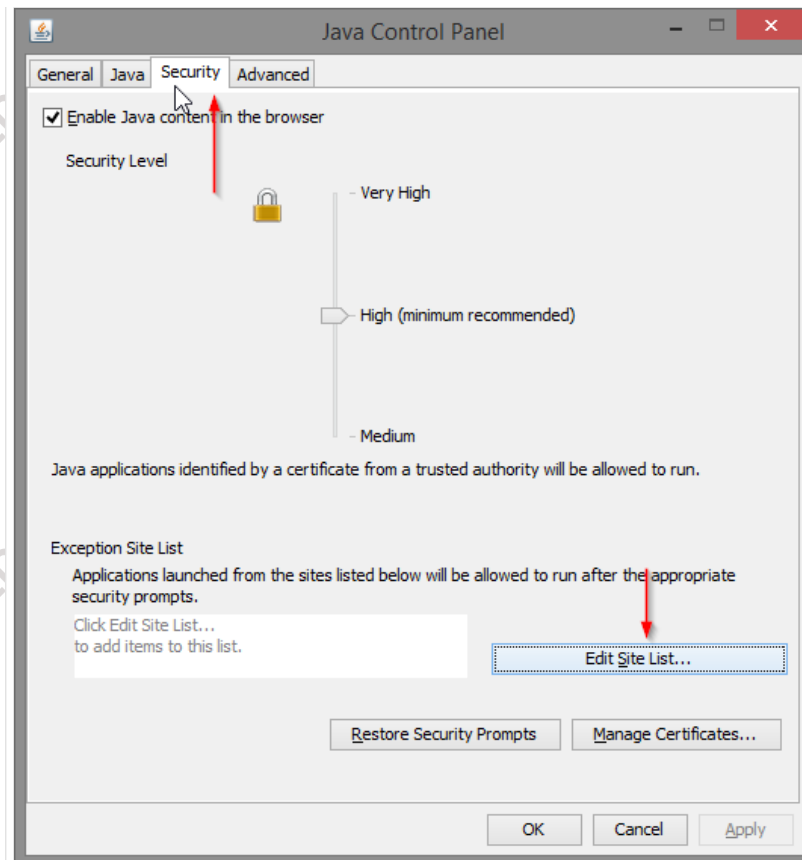
If the applet is blocked for security reasons, you can add your wiki to the Exception Site List (required: Java 1.7.0\_51 or higher):

Step 1: Open your system settings and click on "Java".



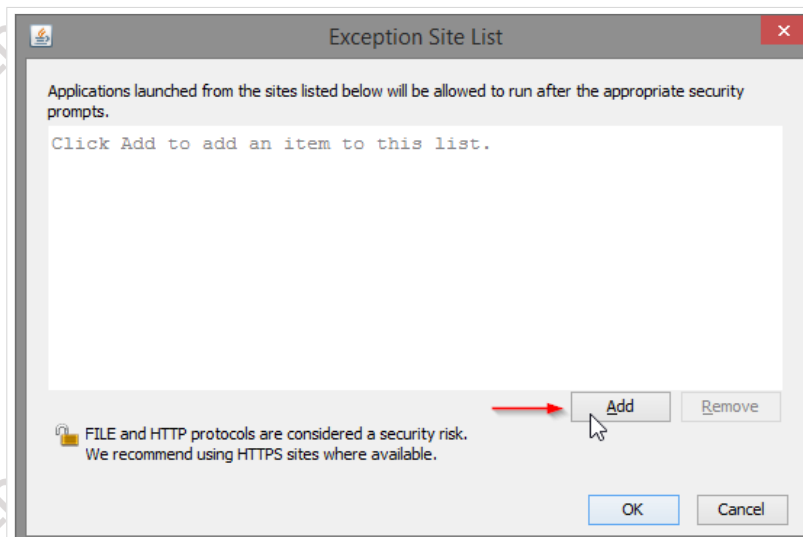
Screenshot: System settings

Step 2: Access the "Security" tab and click on "Edit Site List...".



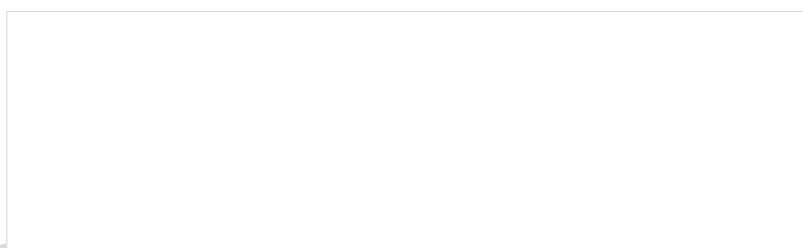
Screenshot: Java Control Panel - Security Tab

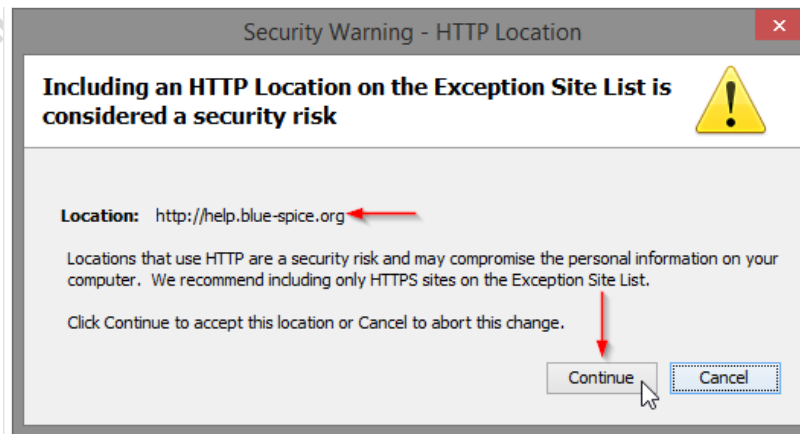
Step 3: Click "Add" to add your website to the trusted pages.



Screenshot: Exception Site List

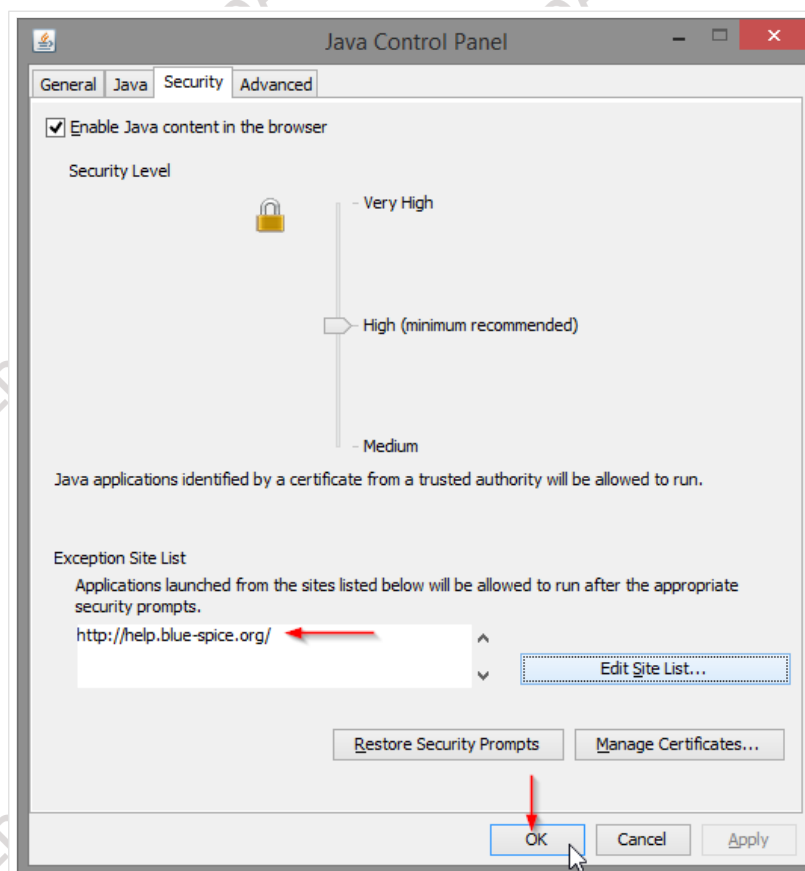
Step 4: Enter the corresponding URL, then click "OK". In the following window, re-check your URL. Click on "Continue".





Screenshot: Security Warning

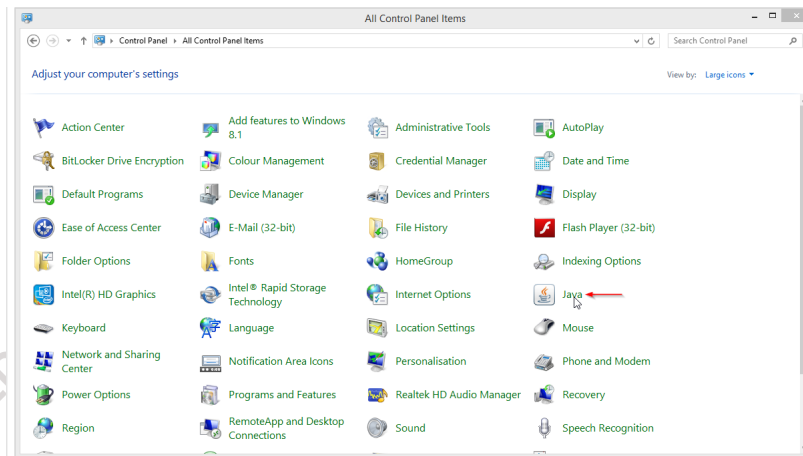
Step 5: The URL should appear in the Exception Site List. Click "OK" to save your changes.



Screenshot: New Exception Site Entry

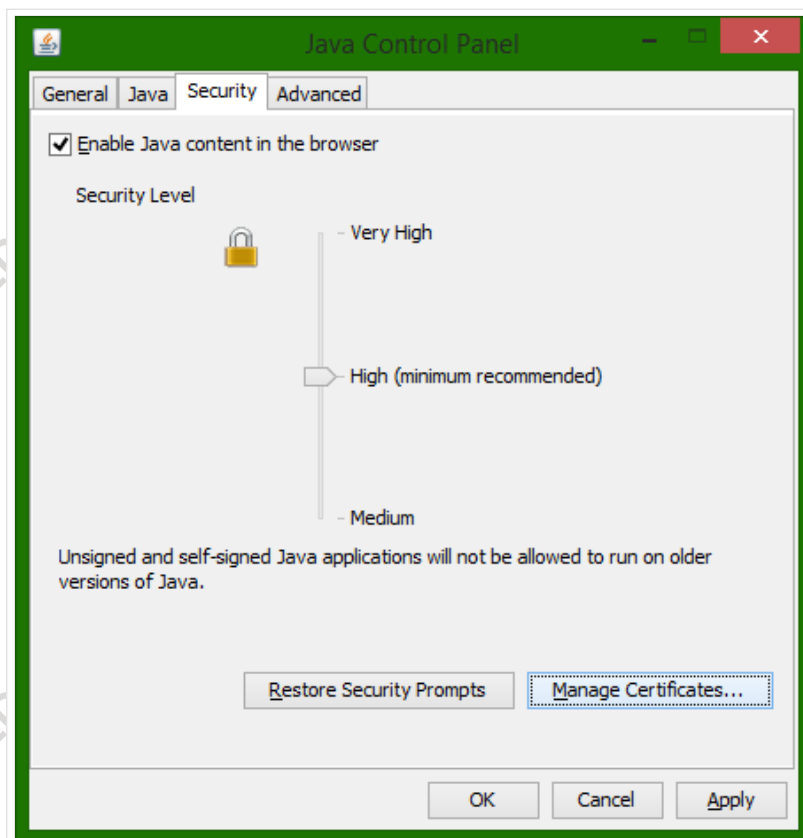
If you are running Java version 1.7.0\_40 or 1.7.0\_45, you need to import the certificate the applet uses:

Step 1: Open your system settings and click on "Java".



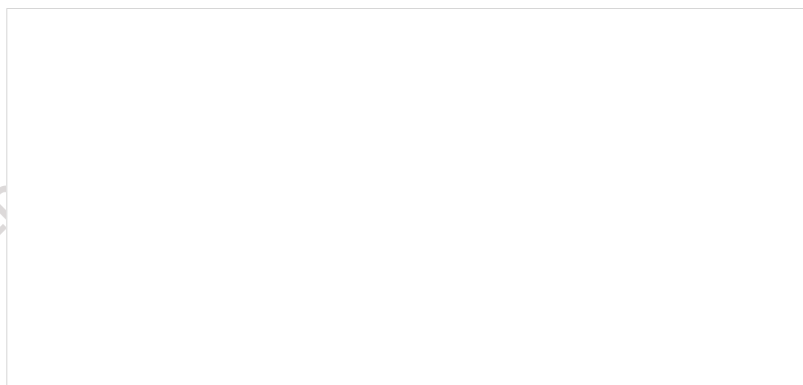
Screenshot: System settings

Step 2: Access the "Security" tab and click on "Manage Certificates...".

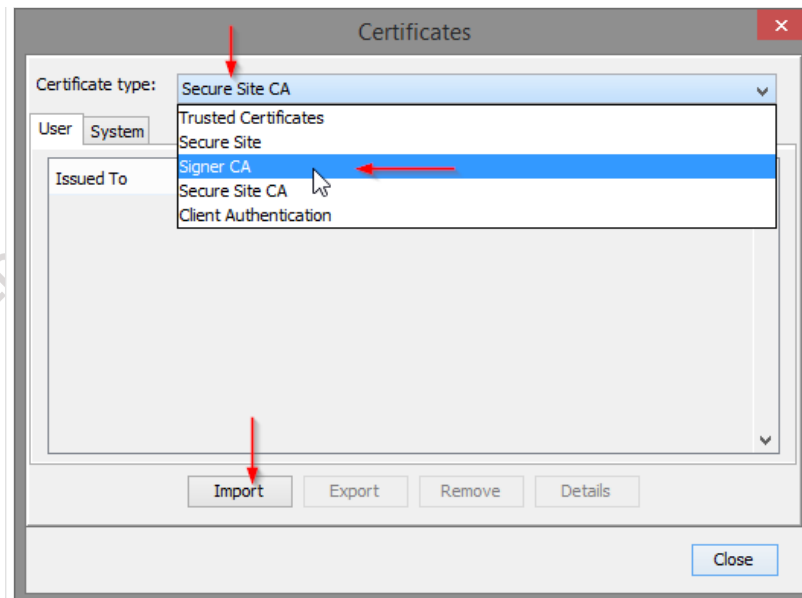


Screenshot: Java Control Panel - Security Tab

Step 3: Choose "Signer CA" as Certificate type. Click on "Import".

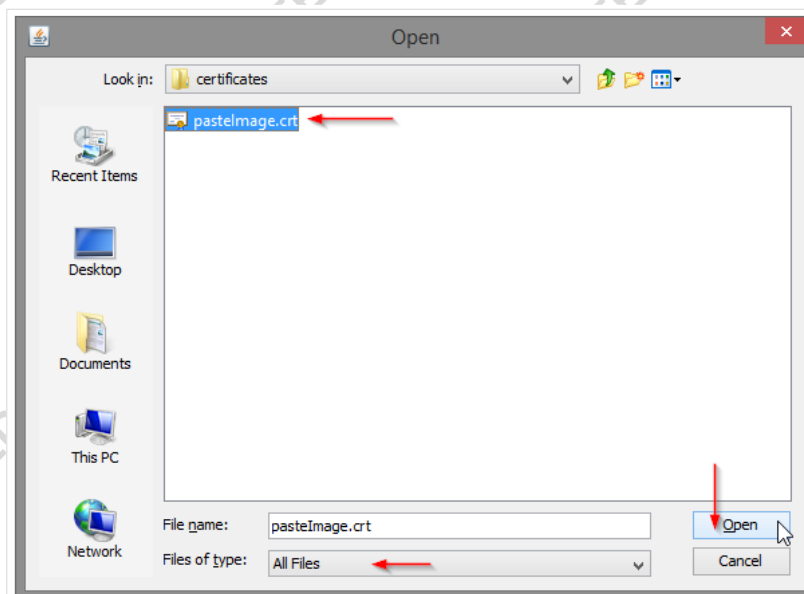






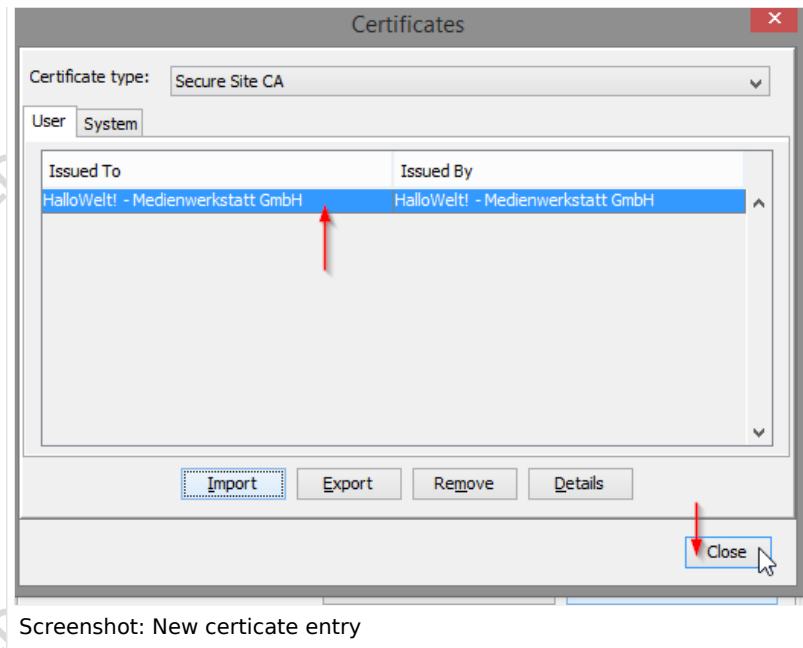
Screenshot: Import Certificate

Step 4: Choose the `pasteImage.crt` file. If you can't see the file, choose "All Files" from the "Files of type" dropdown menu. Click on "Open".



Screenshot: Choose pasteImage.crt

Step 5: Verify that you imported the correct certificate. You can see "HalloWelt! - Medienwerkstatt GmbH" as the issuer. Click on "Close".

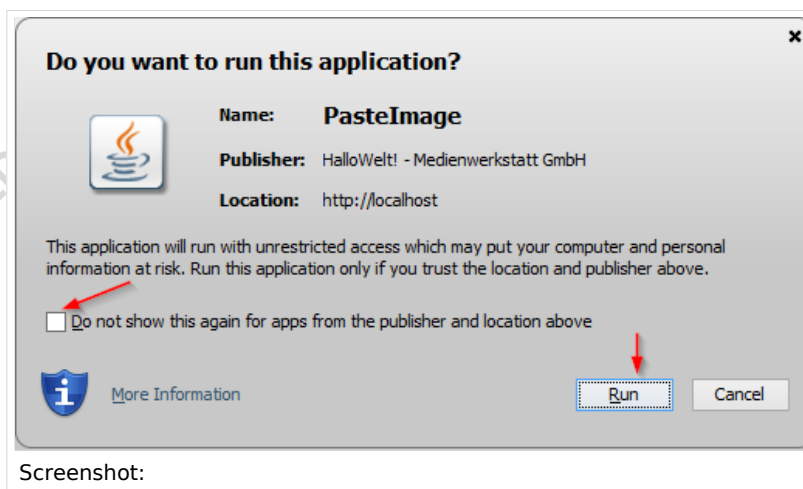


**Please note:** regardless of your Java version, always restart your browser for the changes to take effect!

- **Stop the applet from asking if you want to execute it**

To stop Java from asking you if you want to execute this applet, you need to import the certificate as described above. In addition to that, with Java version 1.7.0\_51 or higher, you need to add your wiki to the trusted sites (as described above).

If all is correct, you see the following window:



To stop Java asking for permissions for this applet, check the checkbox on the left hand side.

The BlueSpice extension **PastelImage** is part of [BlueSpice pro](#). It can also be purchased as a single extension in the [BlueSpice Shop](#).

|}