

## Manual:Extension/BookshelfUI

### Contents

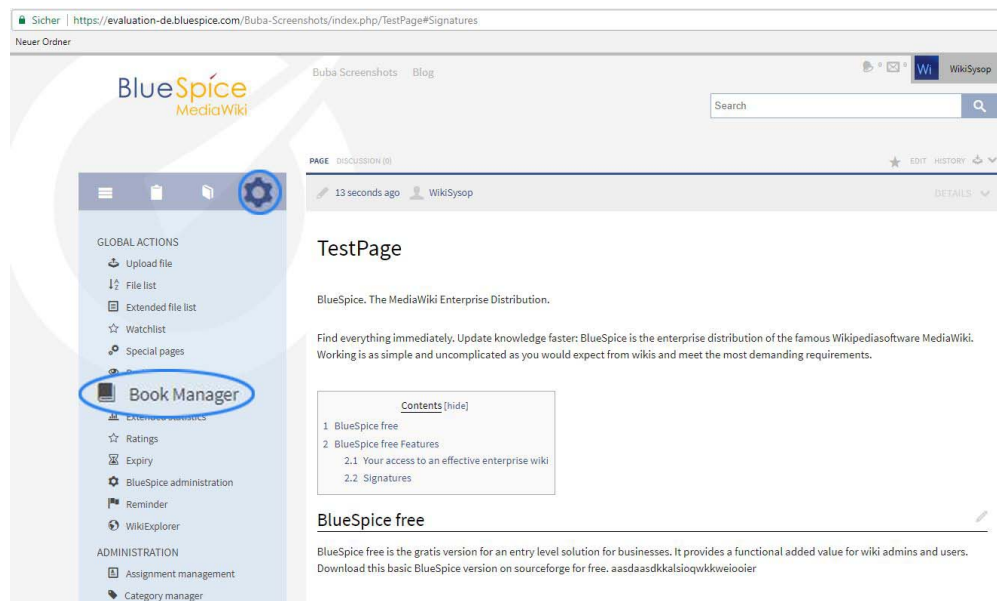
1 What is BookshelfUI? .....	2
2 Where to find BookshelfUI? .....	2
3 Create Article/Page in the book .....	4
4 Add next Article/Page .....	5
5 Books management .....	7
6 Book Editor .....	7
6.1 Mass add .....	8
7 Integrated navigation .....	8
8 See also .....	8

## What is BookshelfUI?

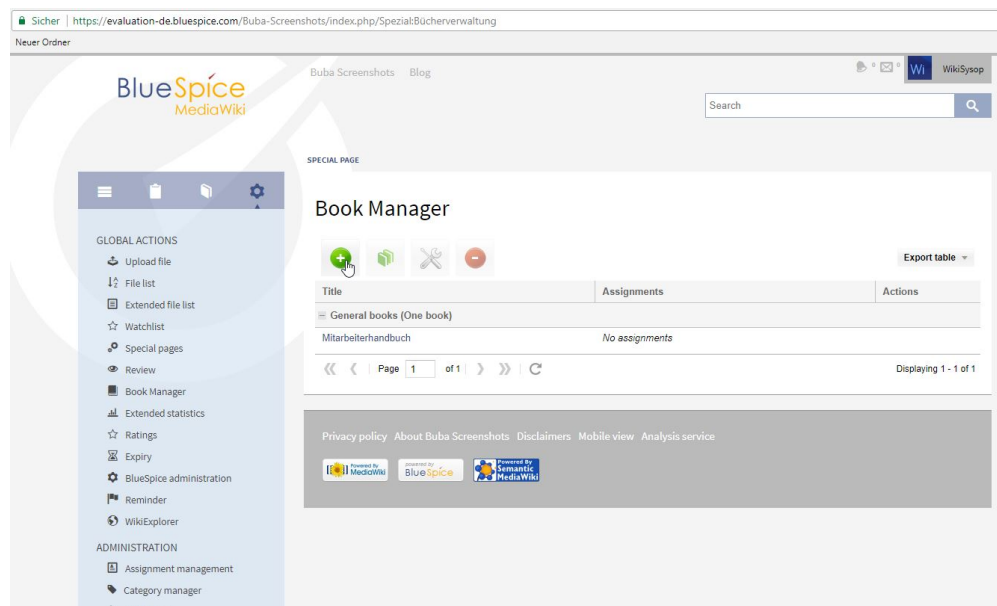
**BookshelfUI** provides a graphical interface for creating, editing and managing books. It consists of a book editor, a book management and an integrated navigation.

## Where to find BookshelfUI?

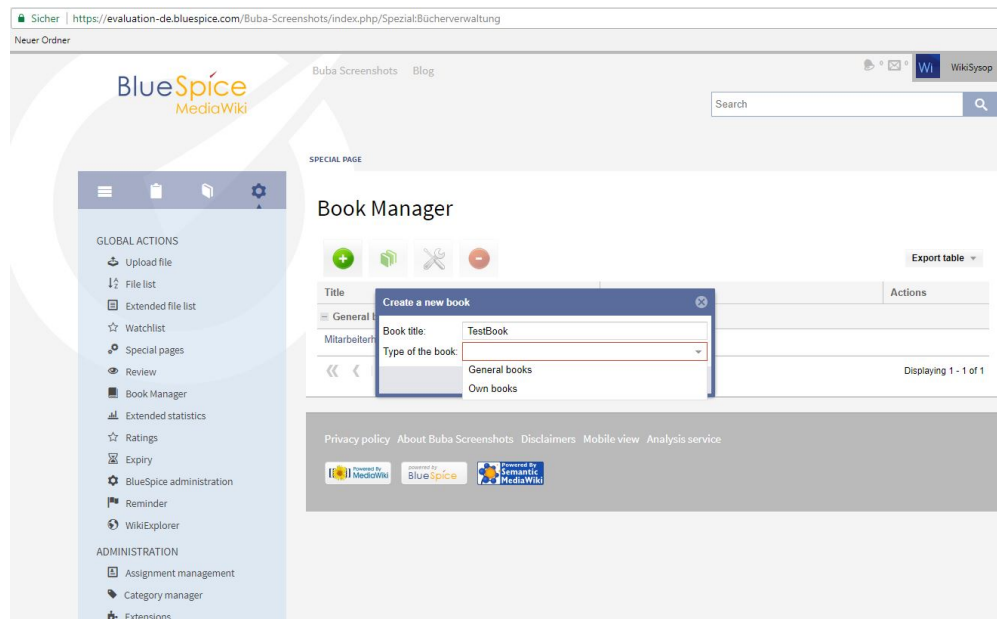
### Global actions, BookManager:



### Add single page:

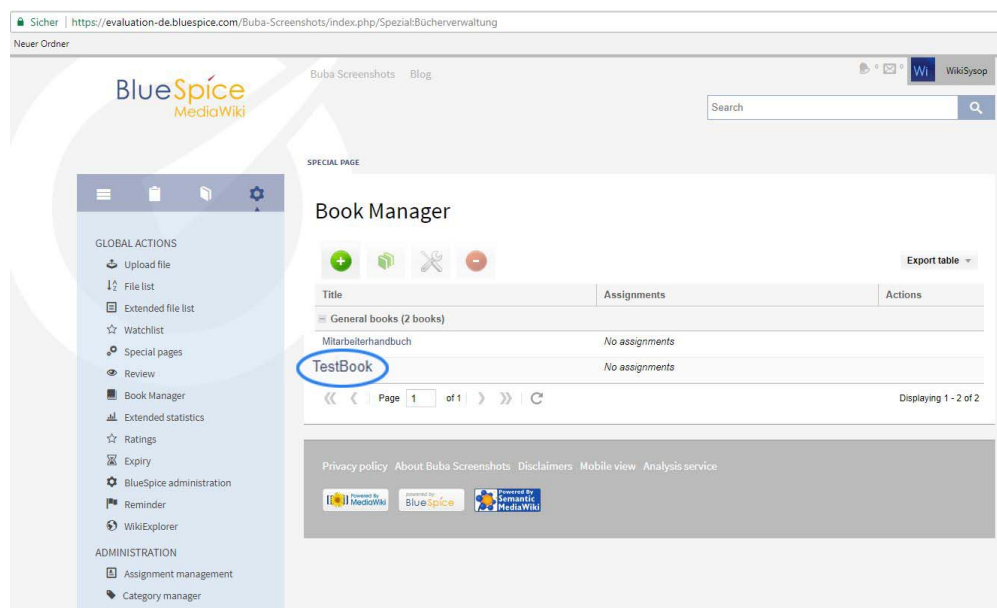


Select the page and enter optional display text:



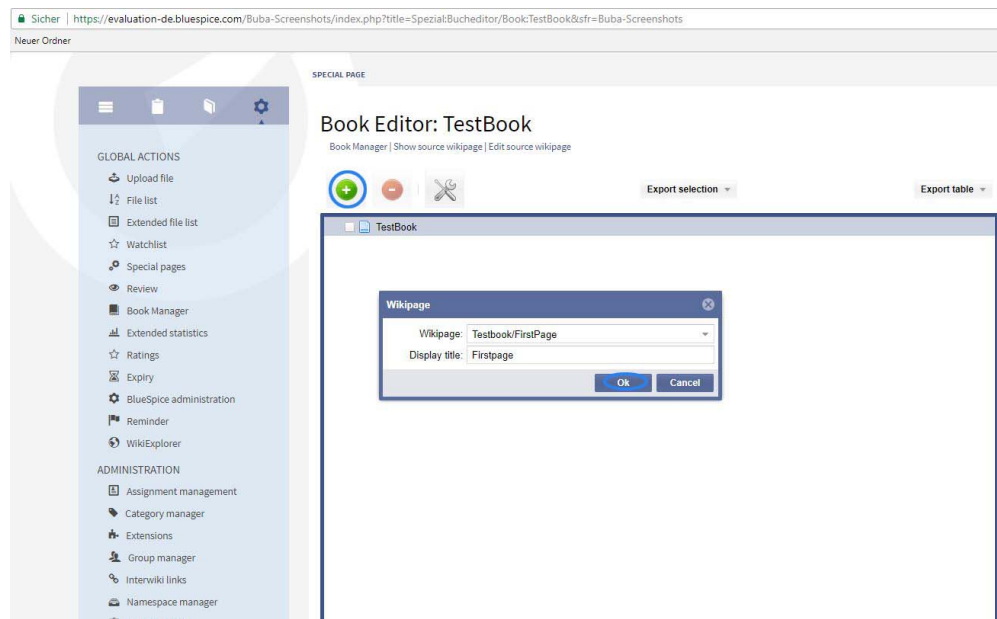
or **Mass add** pages - select set of pages to be added (read more in [Mass add](#) section)

Book is created:

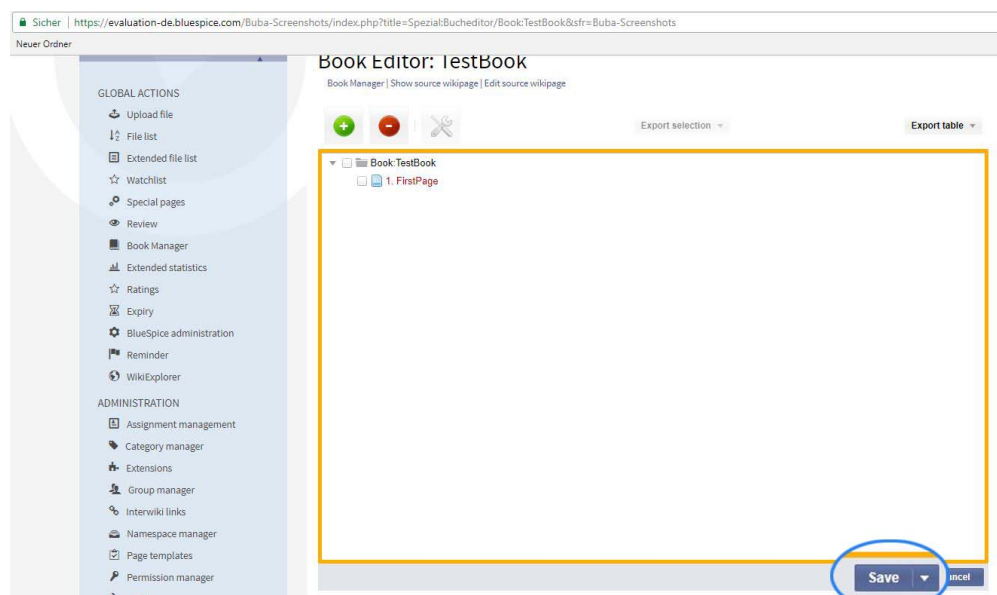


## Create Article/Page in the book

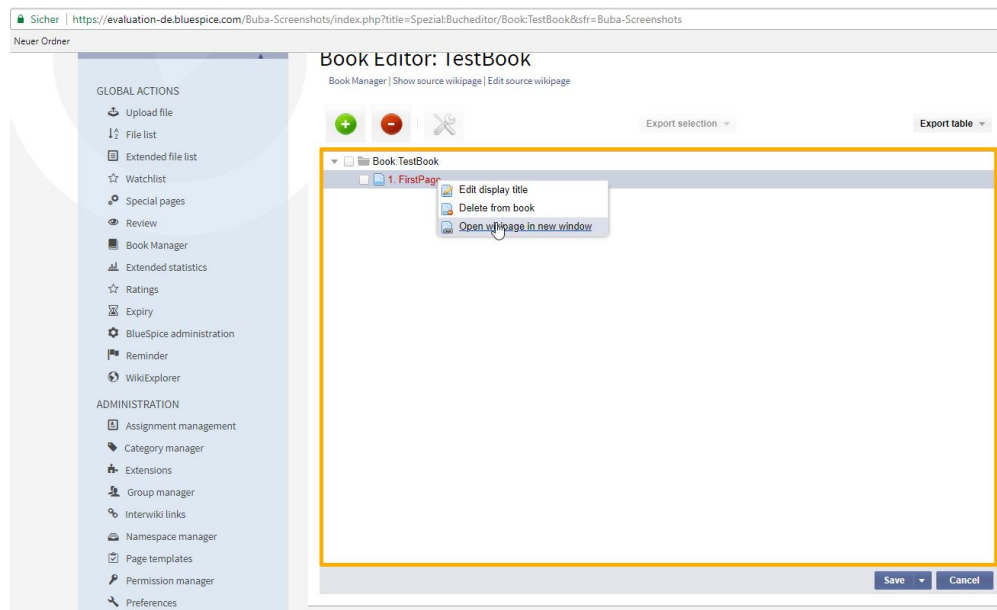
To create article in the book, click **Add** and specified the title:



All changes will only become active after clicking on the "Save" button.

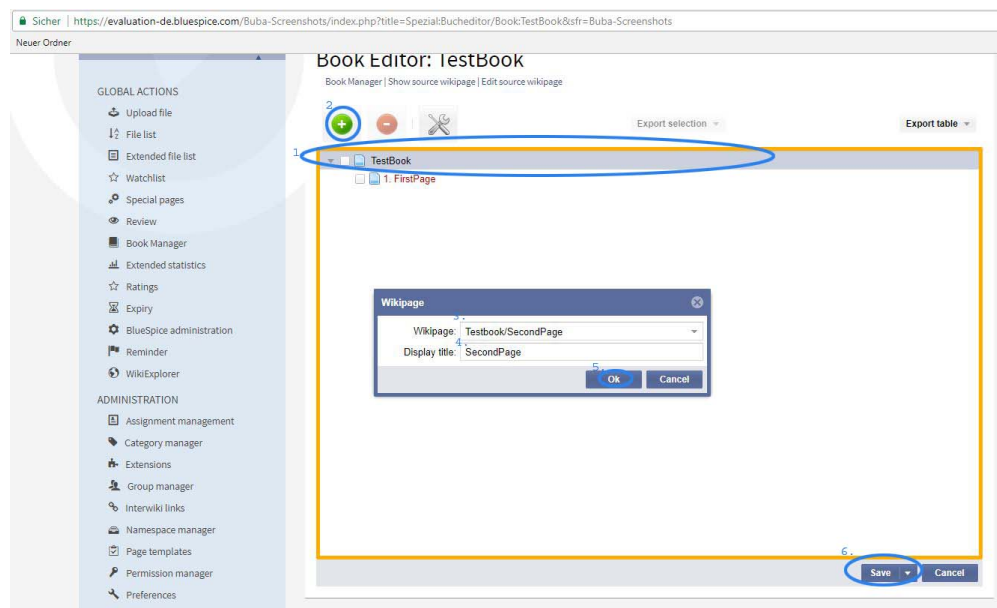


Right click to manage:

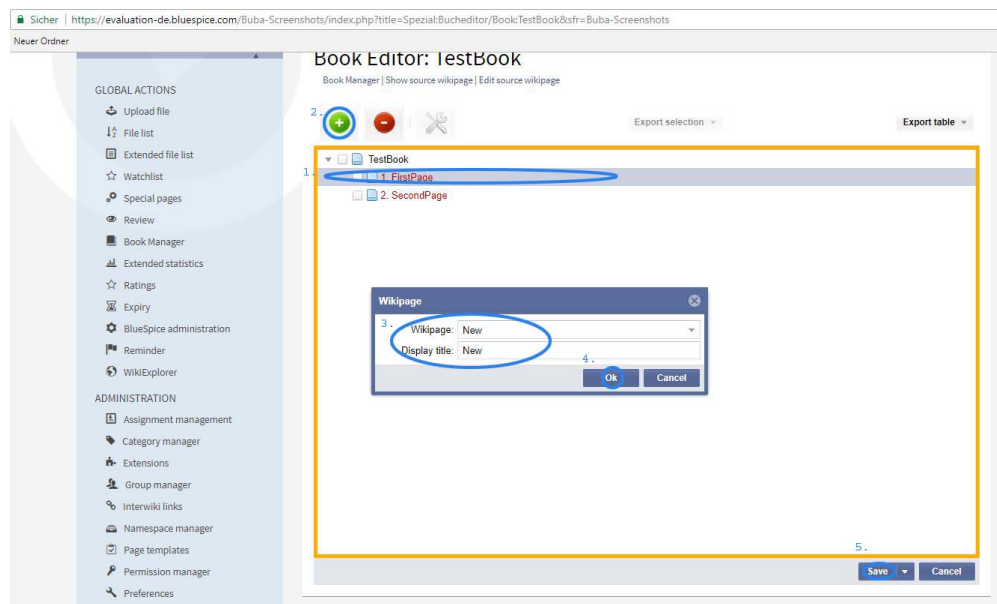


## Add next Article/Page

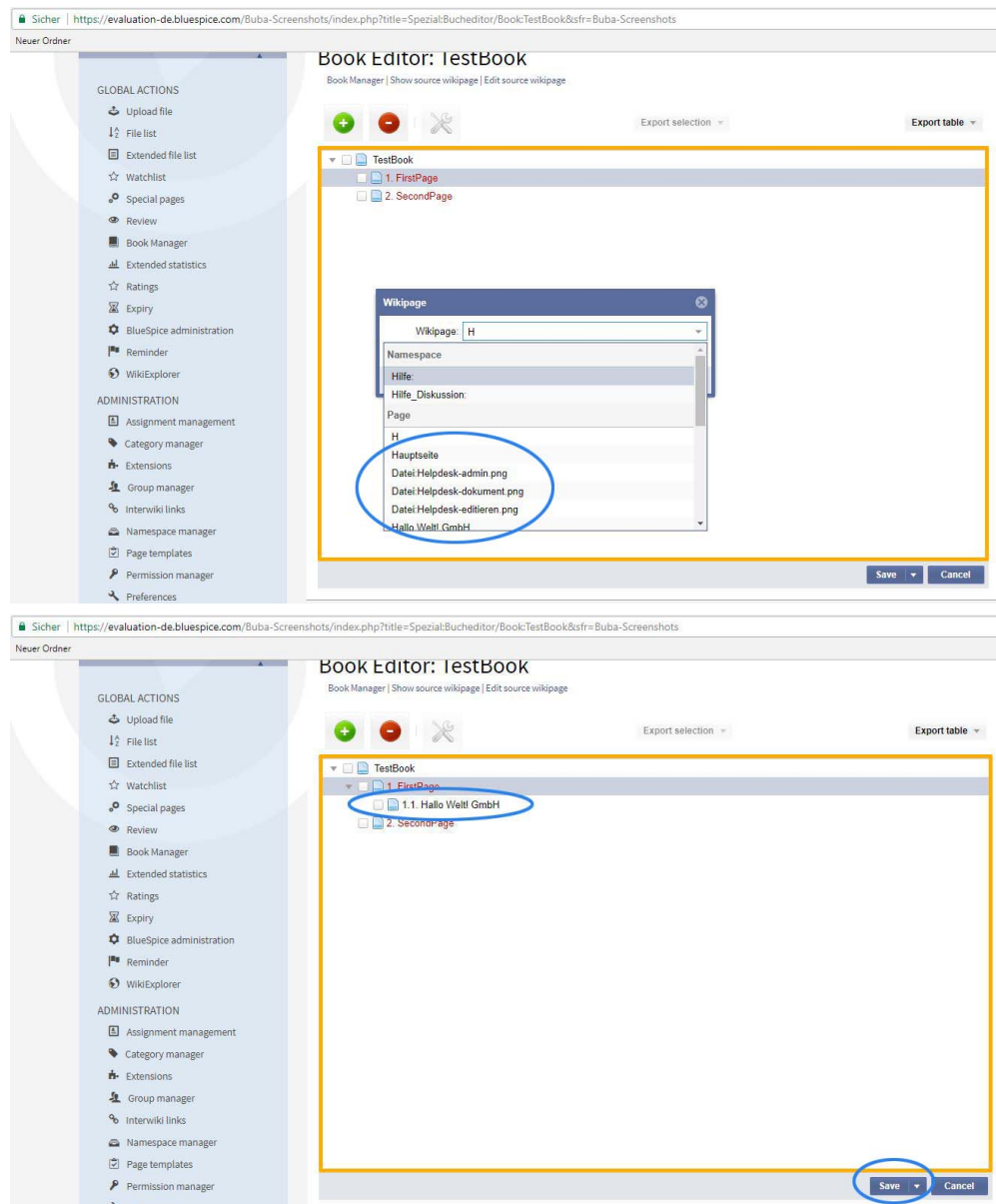
To add next page, mark book and then **Add** button.



To add next page in the already existing page mark, that specific page where you want to add next one.



Or add a page that already exists:



## Books management

- In the book management books can be created, copied and deleted.
- When creating a title must be specified.
- The already existing books are displayed in a list.

## Book Editor

- The book editor displays the contents of a book in a hierarchical folder structure.
- Book chapters are added in the form of wiki articles. A selection dialog opens for this purpose.
- Book chapters can be renamed.
- Book chapters can be dragged into the desired order by Drag'n'Drop.
- Book chapters can be deleted via an icon. It is not the article itself deleted, but only taken from the book.
- Metadata can be inserted via a dialog.
- All changes will only become active after clicking on the "Save" button.

- When saving, the bookshelf tags in the articles are copied (if desired).
- It is possible to mark individual chapters for export.
- If the user clicks on "Export selection", he receives a document in the selected format. At least one export extension must be activated for this.

## Mass add

Pages can be added in a batch in addition to adding single page. There are different sources from which pages can be added: - Subpages - all subpages of a given page - Category - all pages contained in the given category - Page collection - add pages from previously created [Page collection](#) Other extensions can define their own sources, like all pages with certain semantic property, so the list of sources may show additional sources.

## Integrated navigation

---

- The navigation is a separate tab in the sidebar.
- It consists of two areas.
  - Available Books shows a list of all the books stored in the system.
  - Chapter shows the chapter navigation of the currently selected book.
- The two areas are represented by an accordion grid. This also means that only one area is open at a time.
- The ad will be preserved the same way the user selected it when the page was changed.

## See also

---

Our [reference page](#).