

Archive:Extension/PasteImage

Contents

1 What is PasteImage?	2
2 Where to find PasteImage?	2
3 How to use PasteImage? (Step-by-step)	2
4 Features of PasteImage	6
4.1 Additional data	6
4.2 Further editing of images	7
5 Administration	8
5.1 How to adapt PasteImage?	8
5.2 Browser compatibility	8
5.3 Troubleshooting	9
6 See also	14

What is PasteImage?

PasteImage allows users to include images in an article, either via Drag&Drop, or by copying it from the clipboard.

No complicated code necessary.

Where to find PasteImage?

PasteImage is integrated in the edit mode of the wiki. Every time an image is pasted or dropped into one of the two editors, PasteImage is automatically loaded and provides you a special window to enter further data.

How to use PasteImage? (Step-by-step)

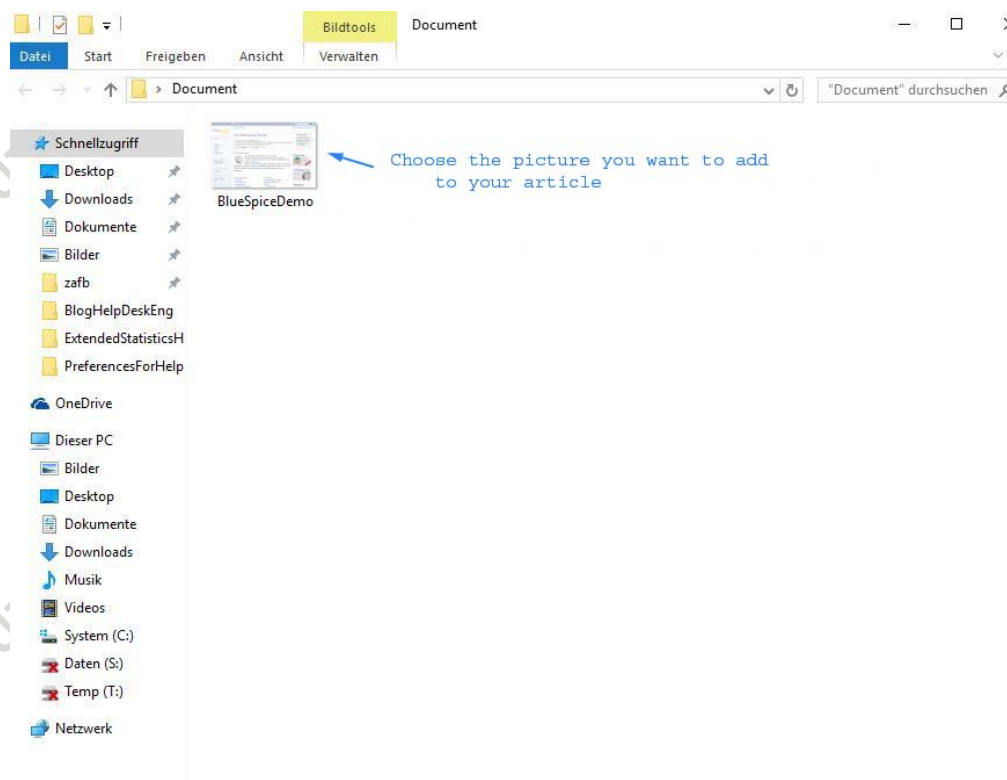
Note: Please see the entry *Technical background* for system requirements and compatibility!

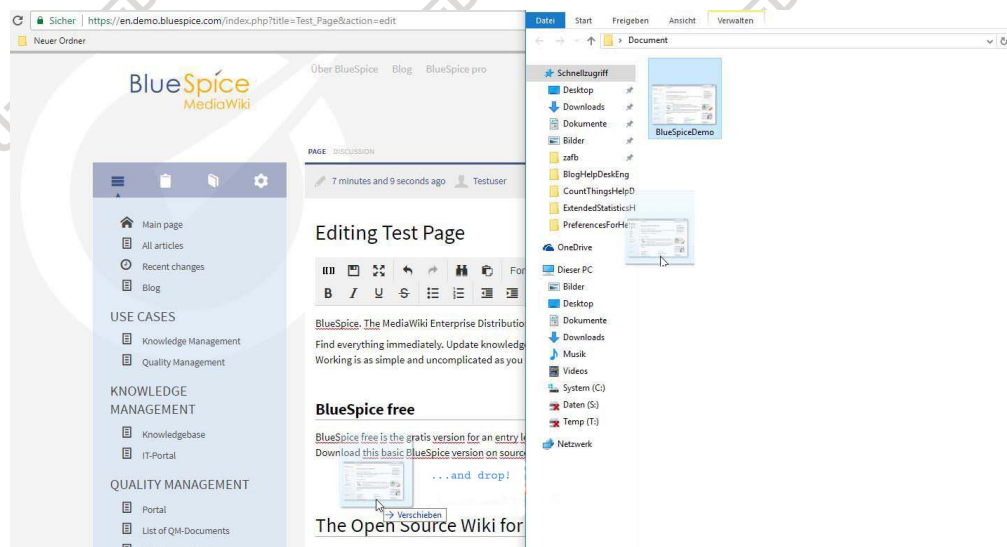
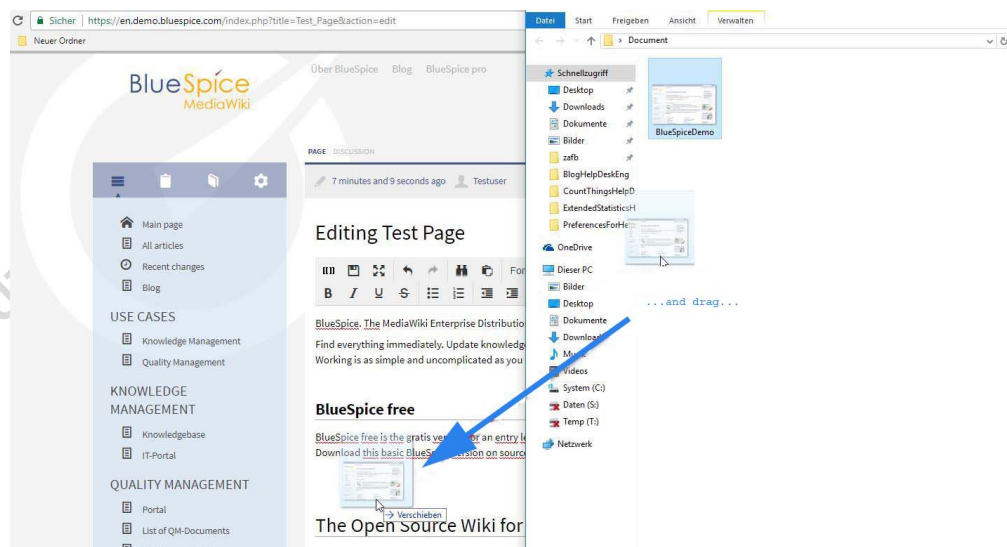
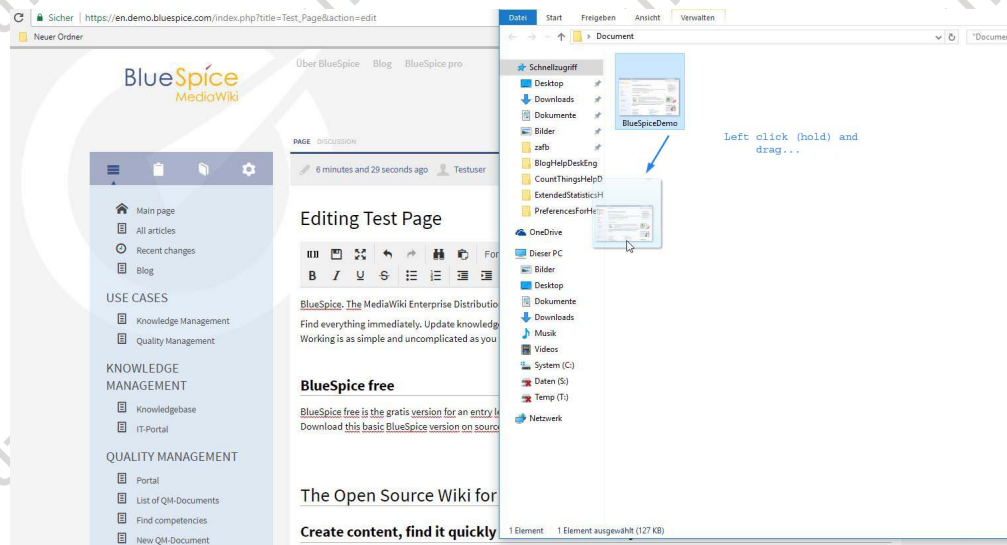
Option 1: Via Drag & drop

Step 1: Open the respective wiki article in edit mode.

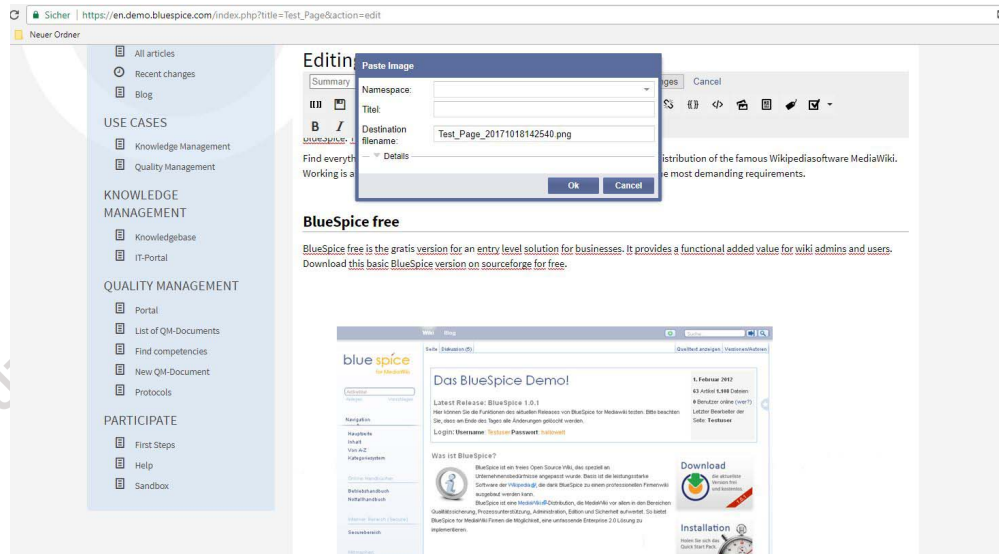
Step 2: Open your Explorer and choose the picture you want to add to your article.

Step 3: Drag and drop the picture into your editor window. A separate window will pop up where you can enter additional information and credentials.





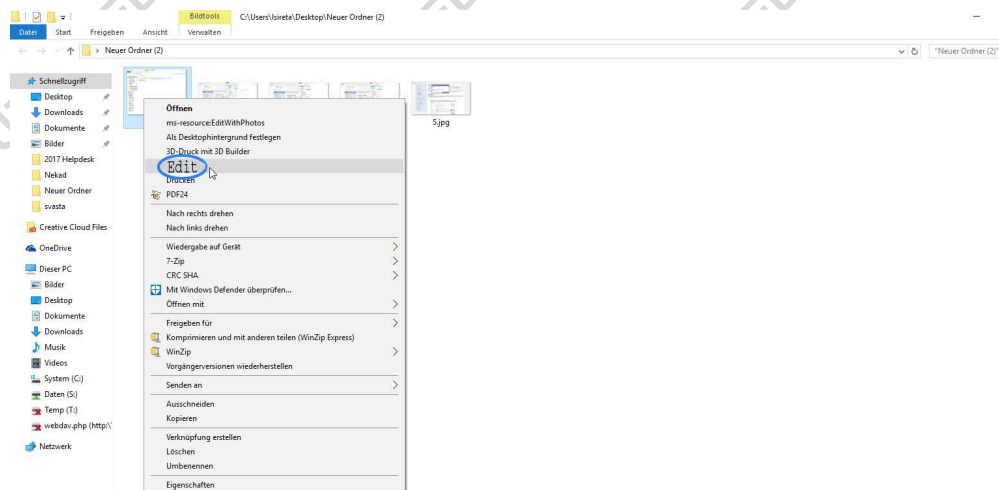
You should get:



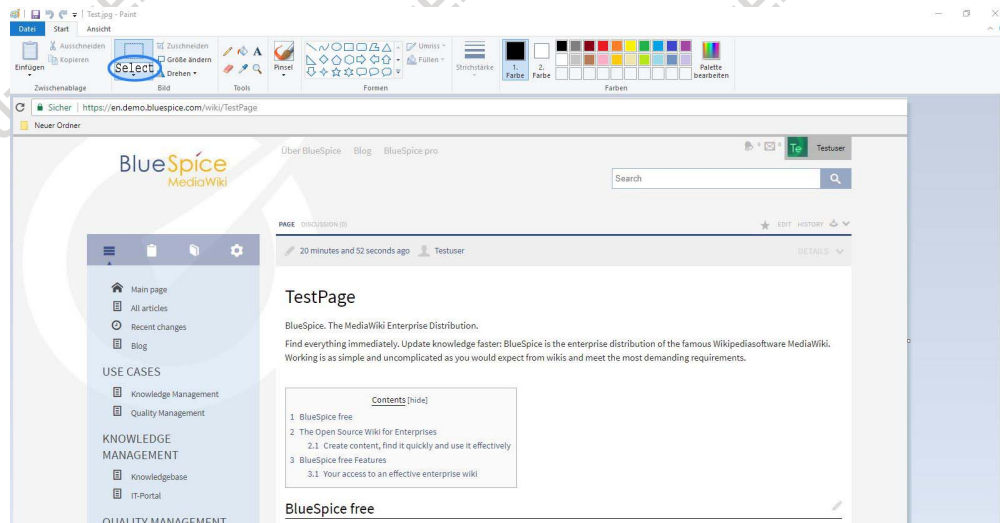
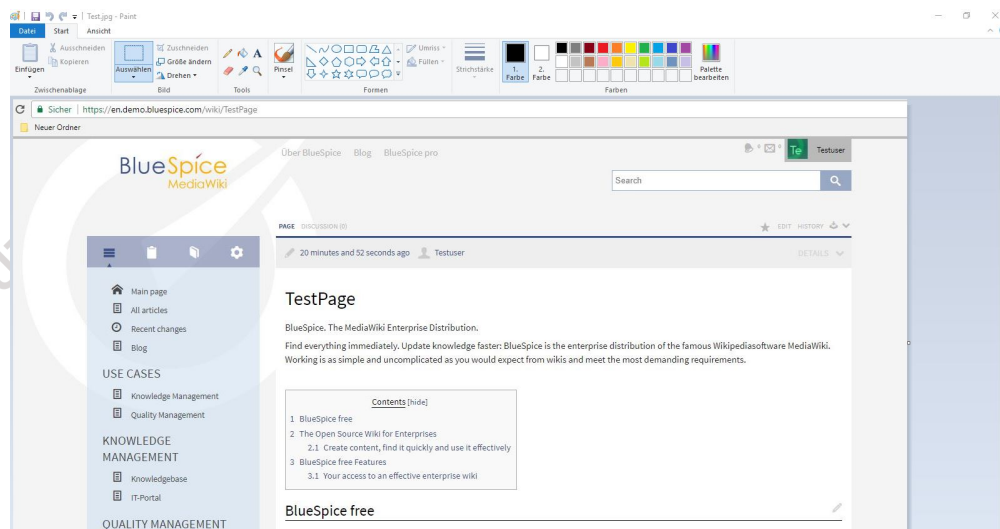
Option 2: Via Copy & Paste

Step 1: Open the respective wiki article in edit mode.

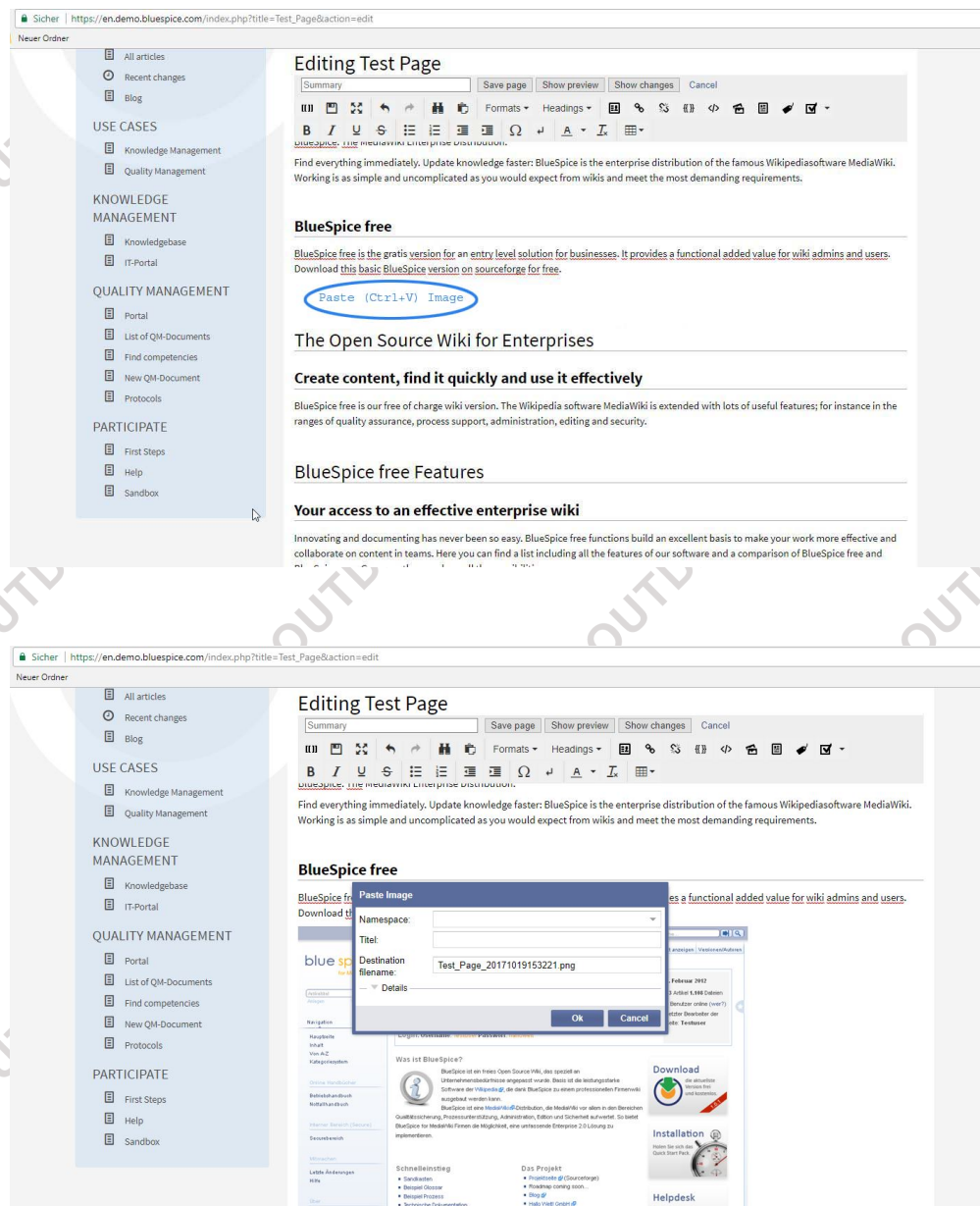
Step 2: Open your Explorer. Right click on your image, then "edit".



Select your image (Ctrl + A):



Then copy you image (Ctrl + C), go to your wiki article, move your mouse cursor to the spot in the editor where you want to insert the image and paste image (Ctrl + V):



Features of PasteImage

Additional data


When inserting the image, a pop-up window appears, allowing you to add the following information to the image:

- The **categories** the image can be found in
- A **summary description** that will appear on the file page of the image
- The **license** the image is under. Note: make sure that you only upload images you are allowed to!
- Furthermore you can place the image on a **watch list**, so you will always be informed about future changes of the image.

Paste Image

Target name: DSC_0623

File Extension: jpeg

 **Enlarge**

Details

Categories: Add a category

Summary:

License:

☐ Ignore any warnings

☐ Watch this file

Ok **Cancel**


Screenshot: Adding additional data to the inserted image

Further editing of images

After inserting an image with PastelImage, you can of course modify it further (resizing, adding alt-text or links, etc.) via the normal functions of your chosen editor.

Insert image

Filter: 18122012054.jpeg **Upload**

Filename	File size	Recent changes
 18122012054.jpeg	0 bytes	04.02.2016 13:52

Details

Filename: 18122012054.jpeg

Display text:

Decoration: ☒ none ☐ thumbnail ☐ frame ☐ border

Adjustment: ☒ none ☐ left ☐ center ☐ right

Link: ☐ No link

Size (w x h): 3264 x 1836

Alternative text:

Ok **Cancel**

Screenshot: Further editing of an inserted image

Administration

How to adapt PasteImage?

Administrators can change the following settings in the preference tab PasteImage:

- **Default File Extension if none provided**
- **Activate Java Applet** (This setting can also be activated or deactivated by the user in the personal user settings under the tab *BlueSpice*)

Browser compatibility

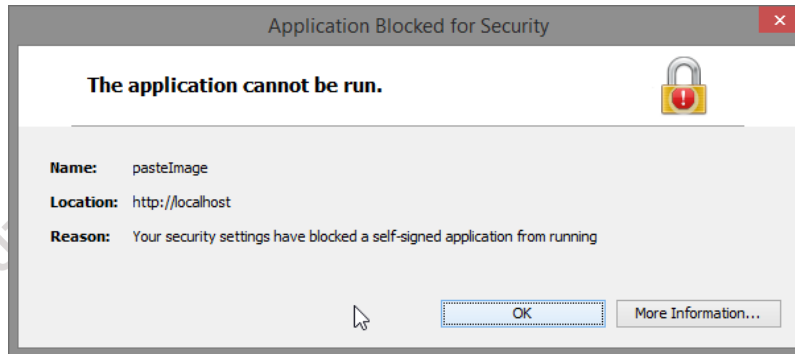
PasteImage is tested and ready-to-use for

- Firefox version 22 and higher
- Internet Explorer version 9 and higher
- Chrome version 13 and higher

Please note: Chrome stopped supporting Java from version 43, so "Copy & Paste" is also not supported anymore. Other features however are not affected.

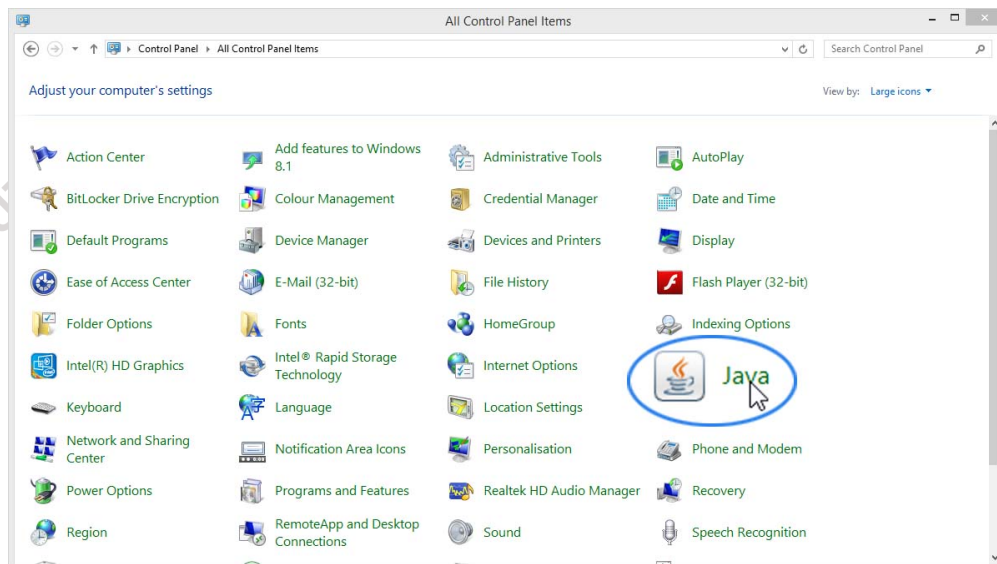
Troubleshooting

- **Application blocked for security reasons**

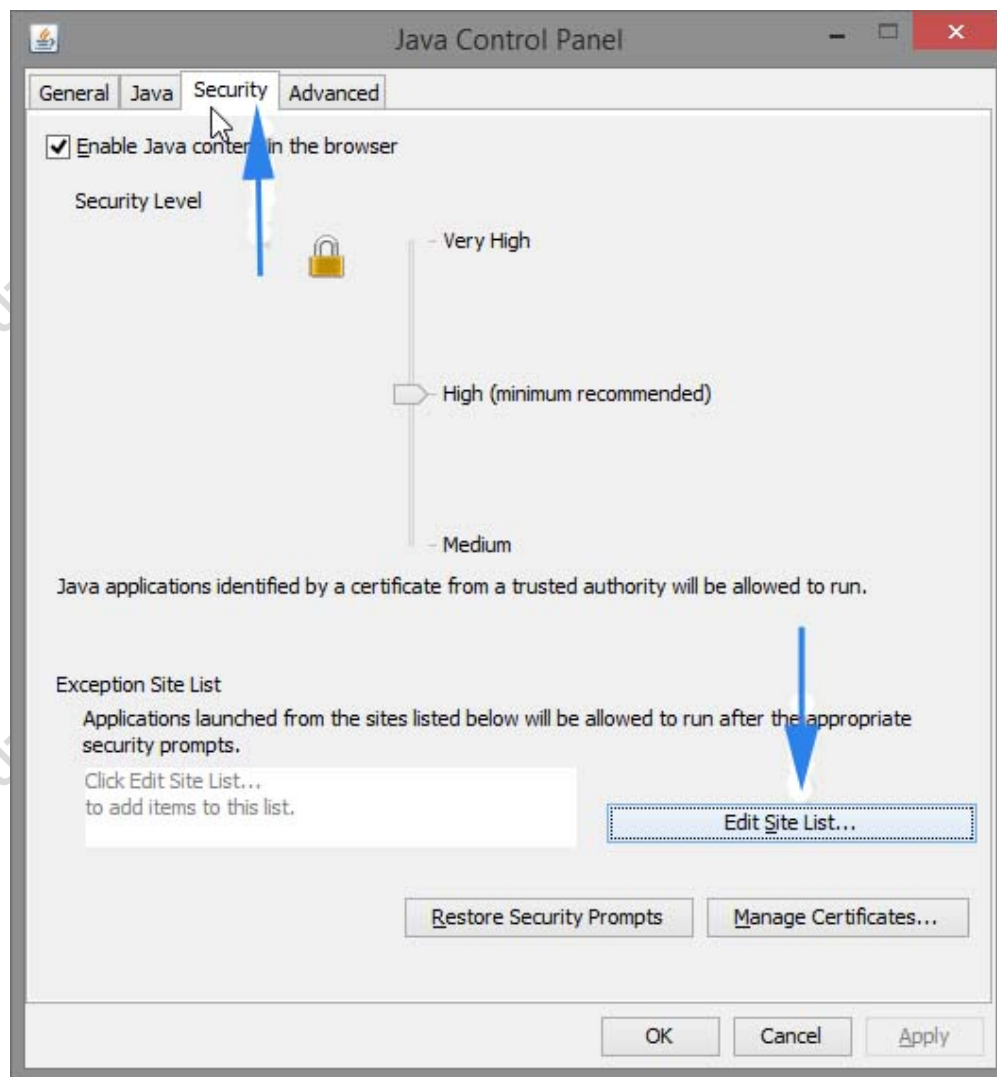


If the applet is blocked for security reasons, you can add your wiki to the Exception Site List (required: Java 1.7.0_51 or higher):

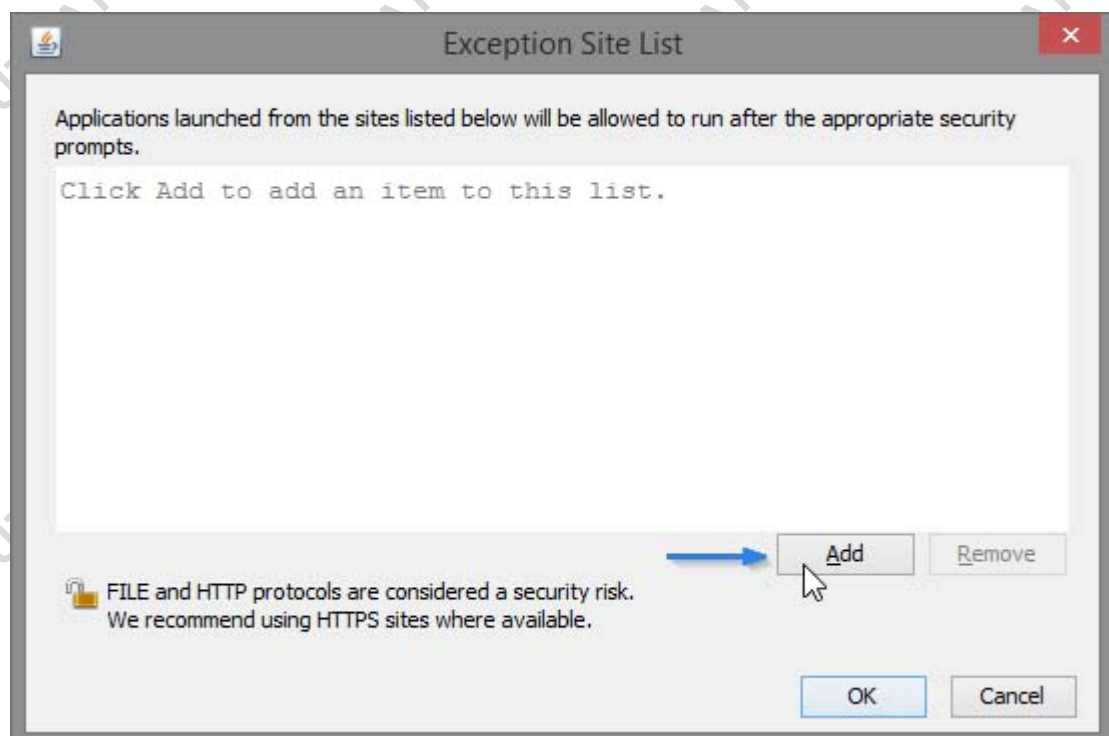
Step 1: Open your system settings and click on "Java".



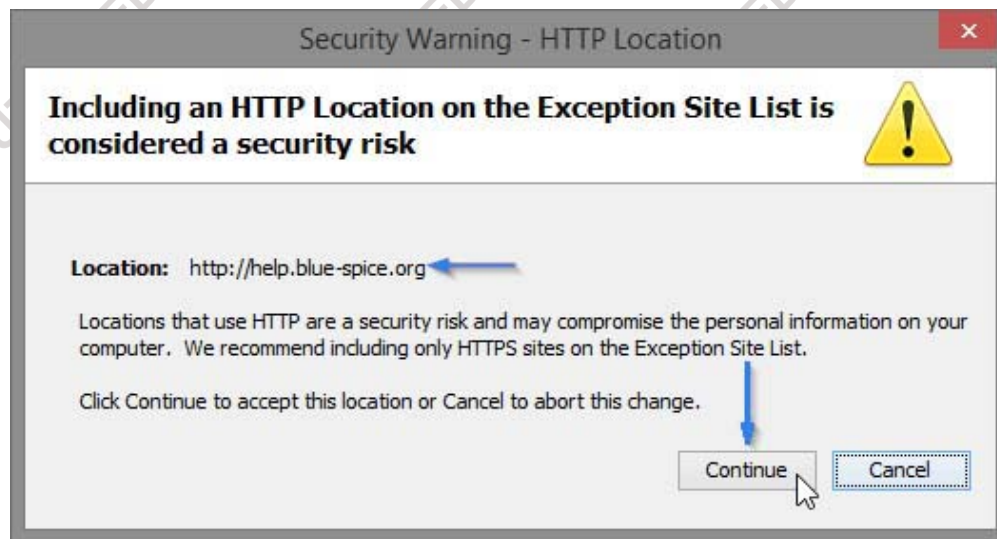
Step 2: Access the "Security" tab and click on "Edit Site List..."



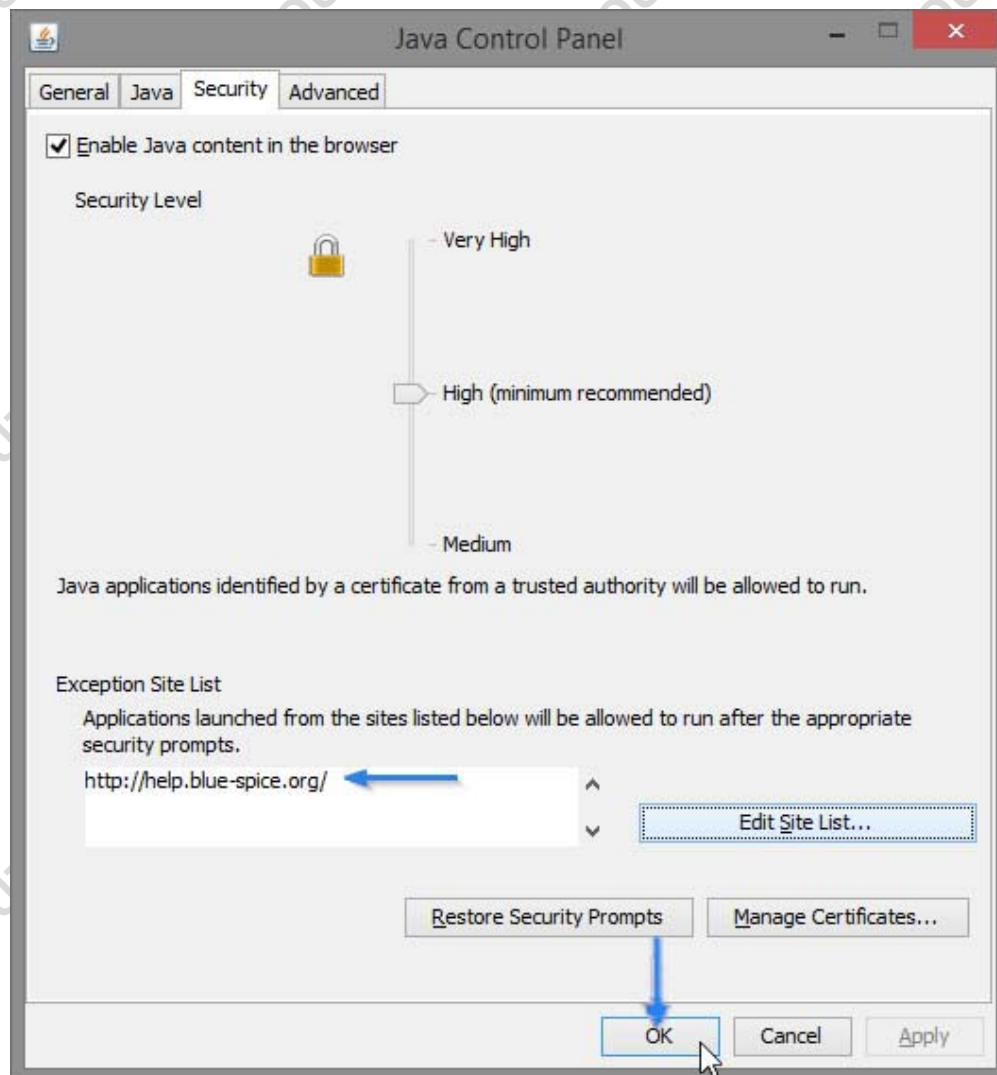
Step 3: Click "Add" to add your website to the trusted pages.



Step 4: Enter the corresponding URL, then click "OK". In the following window, re-check your URL. Click on "Continue".

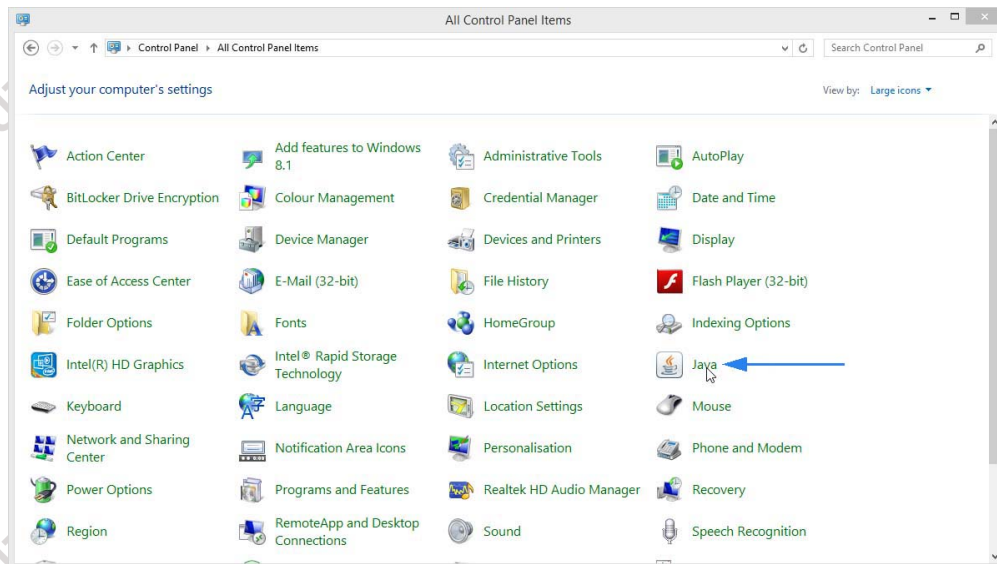


Step 5: The URL should appear in the Exception Site List. Click "OK" to save your changes.

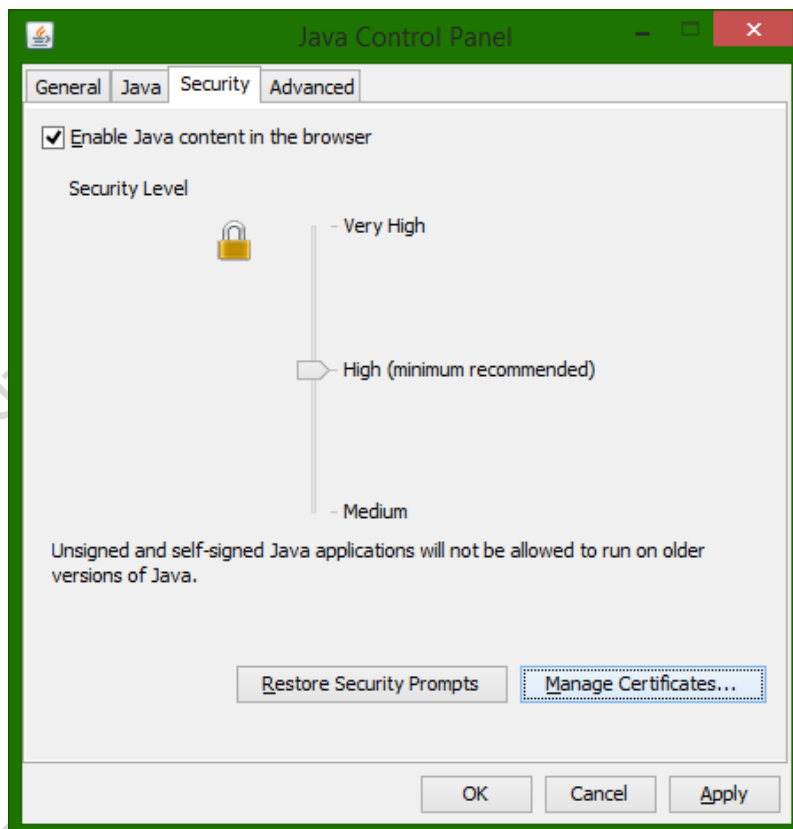


If you are running Java version 1.7.0_40 or 1.7.0_45, you need to import the certificate the applet uses:

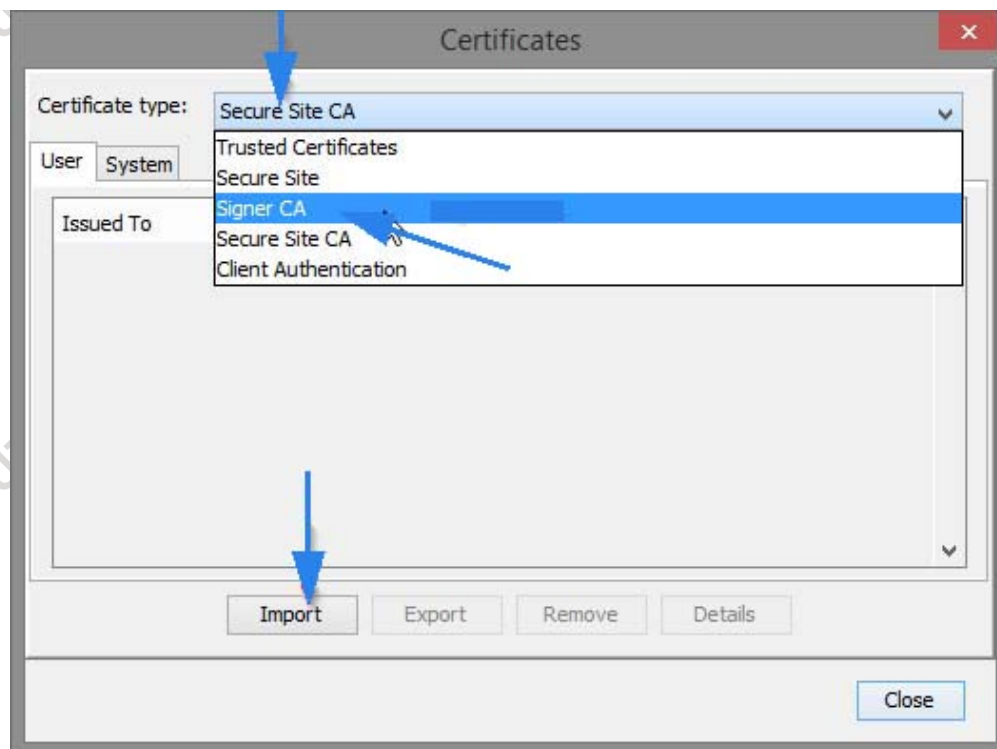
Step 1: Open your system settings and click on "Java".



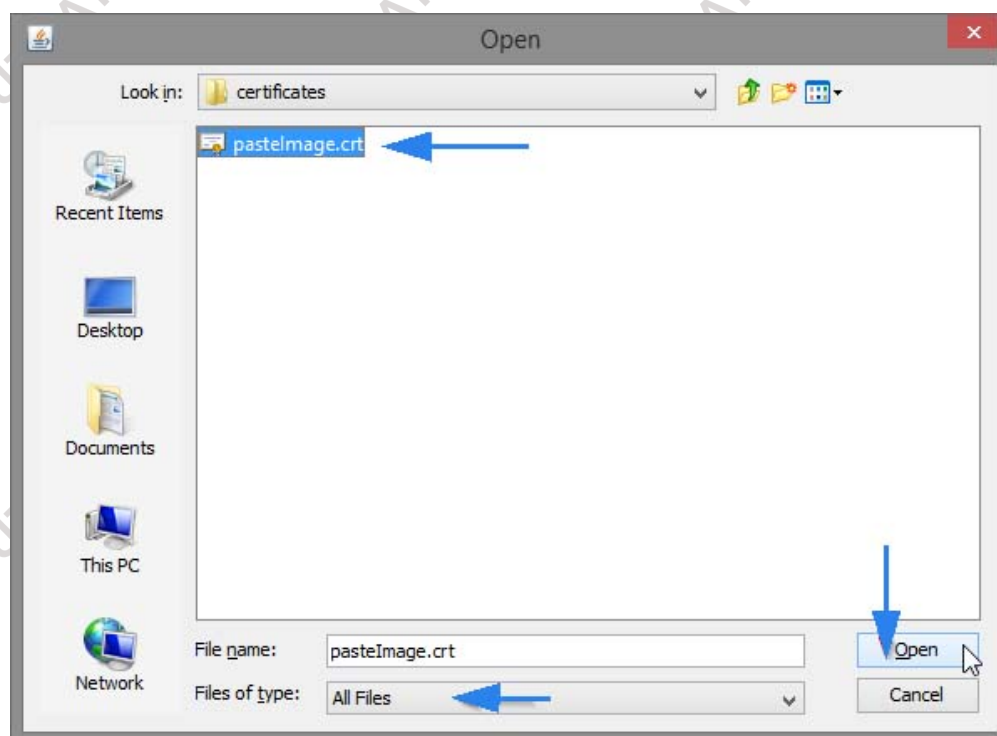
Step 2: Access the "Security" tab and click on "Manage Certificates...".



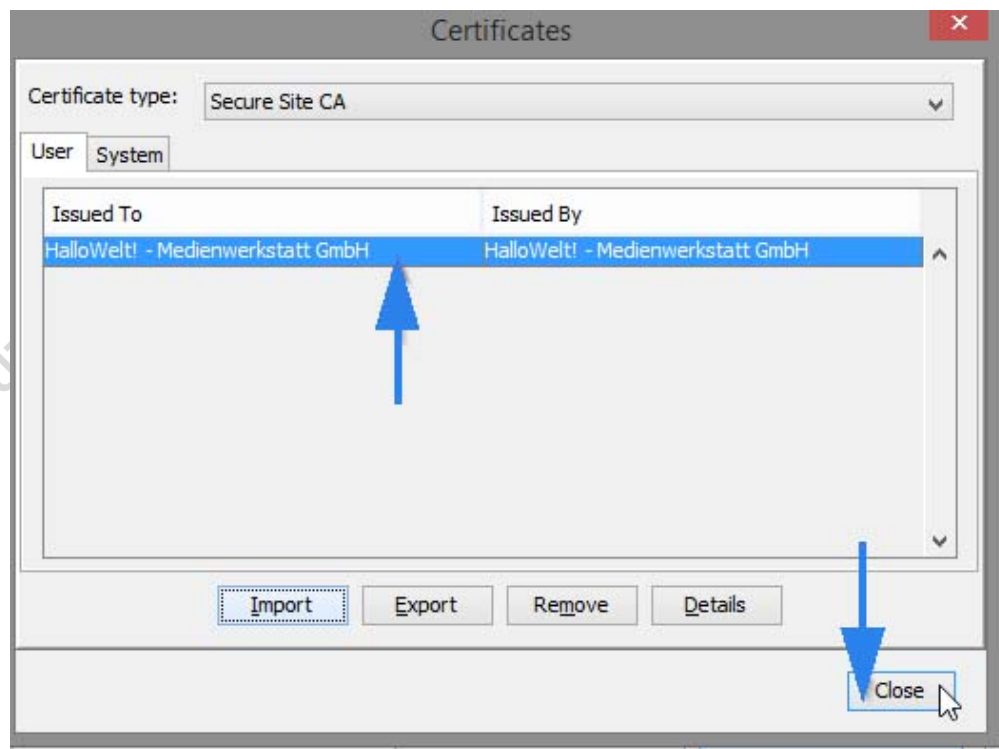
Step 3: Choose "Signer CA" as Certificate type. Click on "Import".



Step 4: Choose the `pasteImage.crt` file. If you can't see the file, choose "All Files" from the "Files of type" dropdown menu. Click on "Open".



Step 5: Verify that you imported the correct certificate. You can see "HalloWelt! - Medienwerkstatt GmbH" as the issuer. Click on "Close".

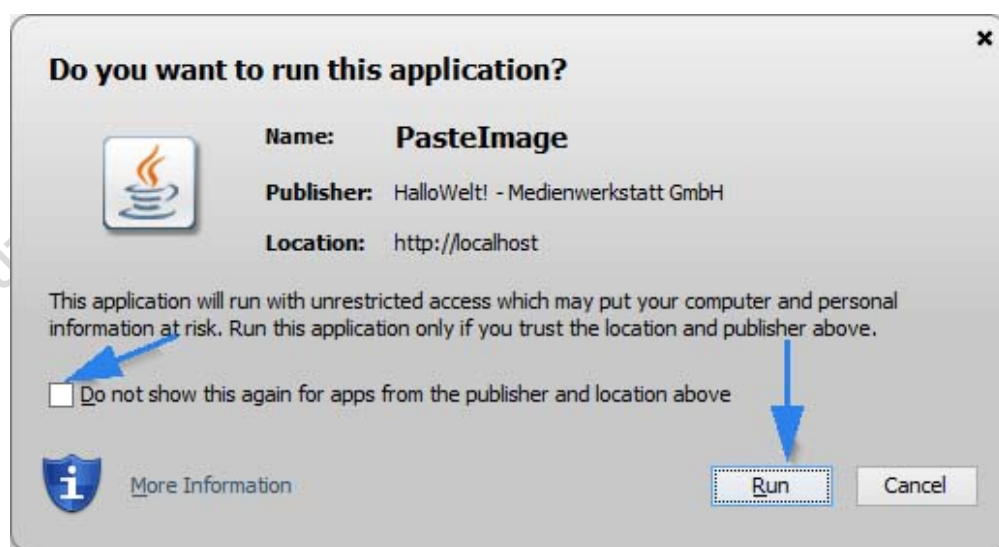


Please note: regardless of your Java version, always restart your browser for the changes to take effect!

- **Stop the applet from asking if you want to execute it**

To stop Java from asking you if you want to execute this applet, you need to import the certificate as described above. In addition to that, with Java version 1.7.0_51 or higher, you need to add your wiki to the trusted sites (as described above).

If all is correct, you see the following window:



To stop Java asking for permissions for this applet, check the checkbox on the left hand side.

See also

Our [reference page](#).