

Contents

1. Reference:BlueSpiceInsertLink	2
2. Manual:Extension/BlueSpiceInsertLink	3

Reference:BlueSpiceInsertLink

Extension\ BlueSpiceInsertLink

Overview			
Description:	Dialog box to enter a link		
State:	stable	Dependency:	BlueSpice
Developer:	HalloWelt	License:	GPL-3.0-onlyProperty "BSExtensionInfoLicense" (as page type) with input value "</br>GPL-3.0-only" contains invalid characters or is incomplete and therefore can cause unexpected results during a query or annotation process.
Type:	BlueSpice	Category:	Editor
Edition:	BlueSpice pro, BlueSpice Farm, BlueSpice Cloud, BlueSpice free (deactivated)		
View help page			

Features

BlueSpiceInsertLink offers a dialogue to insert links without using wiki code.

Links are inserted from the menu item *Link* in the visual editor toolbar.

Users can link the following targets:

- other wiki pages (with autocomplete function)
- external websites
- files uploaded to the wiki
- files on a network drive

Technical Information

This information applies to BlueSpice 3 . Technical details for BlueSpice cloud can differ in some cases.

Requirements

MediaWiki: 1.31
BlueSpiceFoundation: 3.2

- BlueSpiceVisualEditorConnector: 3.2

Integrates into

- BlueSpiceVisualEditorConnector

Special pages

- InsertLinkFileChooserJNLP

Configuration

Name	Value
InsertLinkAllowUnMapped	true
InsertLinkEnableJava	false
InsertLinkFilesystemMap	array ()

Hooks

- [BeforePageDisplay](#)

Insert links

A [quality version](#) of this page, [approved](#) on *11 August 2021*, was based off this revision.

Contents

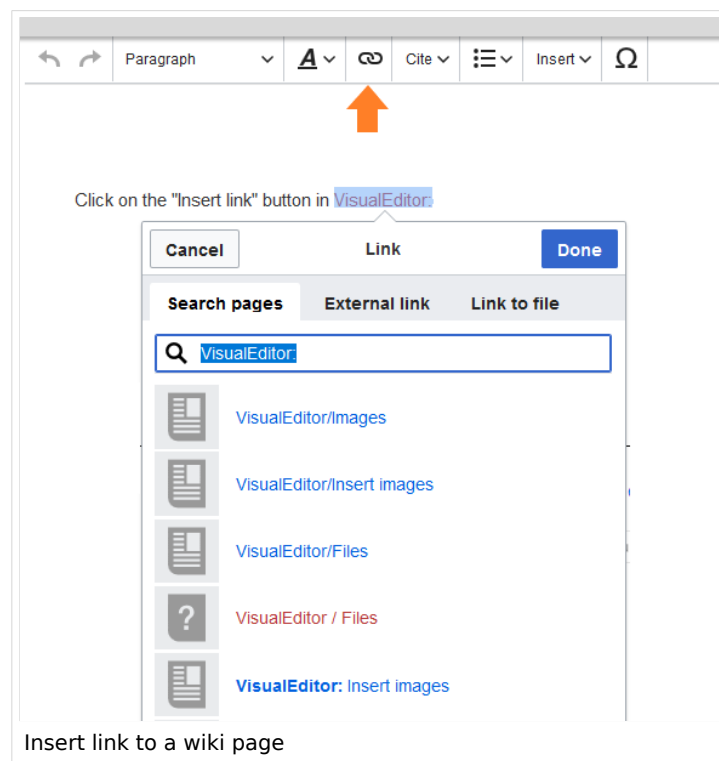
1 How do I create links?	4
2 Link to a wiki page	4
3 Link to an external website	5
4 Link to a file in the wiki	5
5 Link to a file in the local network	6
6 Related info	8

How do I create links?

Linking pages is an important feature of browser-based knowledge documentation. The links often differ in their function. Links connect wiki pages with:

- other wiki pages
- external websites
- files (images, PDF files, Word documents,...)
- files stored on other drives

Use the *Insert link* menu item in [VisualEditor](#) or use the shortcut *Ctrl+K*. In both cases, a dialog box opens.



Link to a wiki page

Internal links connect related pages or other content that provides more information. Page names can exist multiple times in different namespaces. Therefore, under *Search pages*, enter the namespace if the destination page is not in the same namespace as the current page.

If you have selected some text on the page, you will find some page suggestions already listed in the *Search pages* tab. Here, you can adjust the search term accordingly or create a link to a new page.

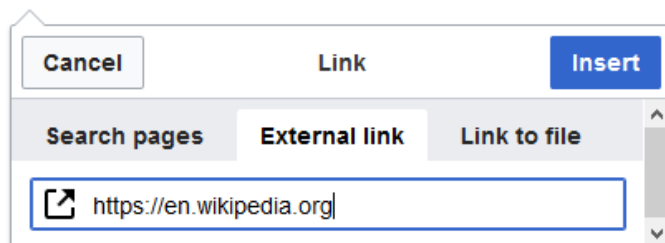
Then click on *Done*.

In the source text, links are created with the following structure:

- **Link to a wiki page:** `[[landing page name|caption]]`
- **Link to a wiki page in another namespace:** `[[namespace:landing page name|caption]]`
- **Link to a category page:** `[[Category:category name|caption]]` To create a link to a category, the source code is preceded by a colon before the category name. In contrast, the link "Category: BlueSpice" would create a category called BlueSpice instead of linking to the category BlueSpice.
- **Interwiki link:** `[[Imdb:tt2709692]]` If your wiki links to other wikis, you can use the tab *Search pages* also to directly link to a page in a related wiki. For example, if your administrator maintains an interwiki link for the IMDb movie database, it can be typed in as in the example above. Ask your administrator which interwiki links are available in your wiki.

Link to an external website

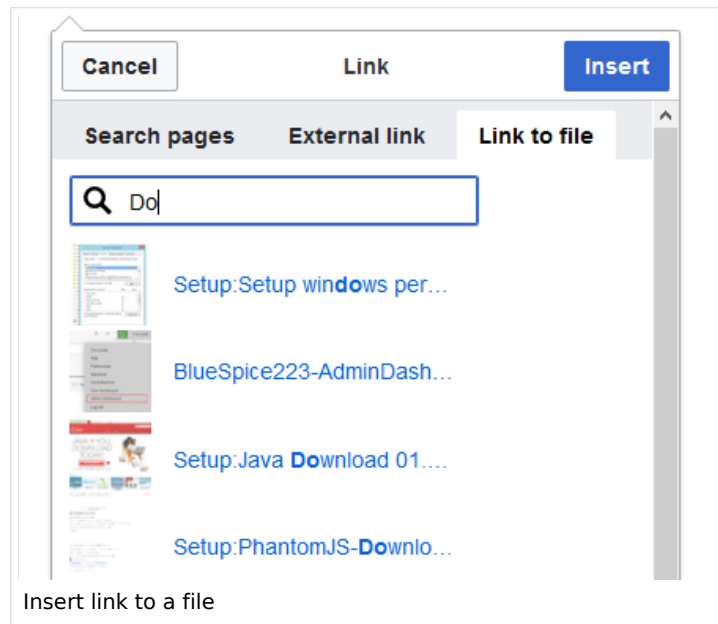
To link to an external website, mark text on your page, e.g. the word "Wikipedia". Press Ctrl+K and switch to the tab *External link*. There you enter the web address. Then click *Insert*.



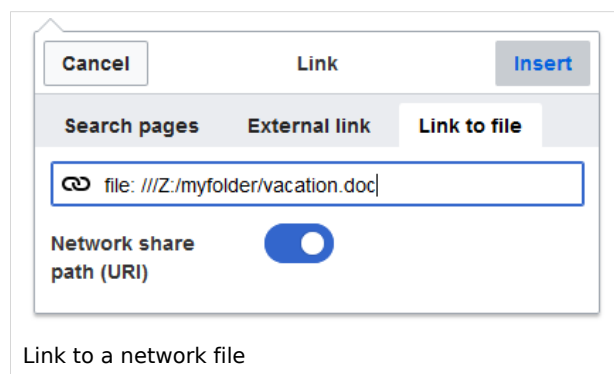
Note: To easily maintain external links on your wiki, use the page [Special:LinkSearch](#). This page allows you to search for external links in your entire wiki. The page also contains a link to the associated Mediawiki help page.

Link to a file in the wiki

To link a file (for example, a picture or a PDF file) in the current page, go to the *Link to File* tab. There, you can search for a file or upload a new file.



- **Search for a file in the wiki and include it as a link:** Enter the file name and select the desired file. Then click on "Paste". A link to the file has been added to the page. You can then change the displayed link text.
- **Link file to a network drive:** If you want to connect to a file on your company network, enter the path under "Link to file" in the text field and activate "Network share path (URI)". The file path is entered using the following syntax - `[[[:file:///Z:/myfolder/vacatio]]`. This only works if your wiki has been configured to work with network files. This function also depends on your individual browser security settings.



Link to a file in the local network

If you want to link to a file on your company network, you can also use the *Link to file* tab.

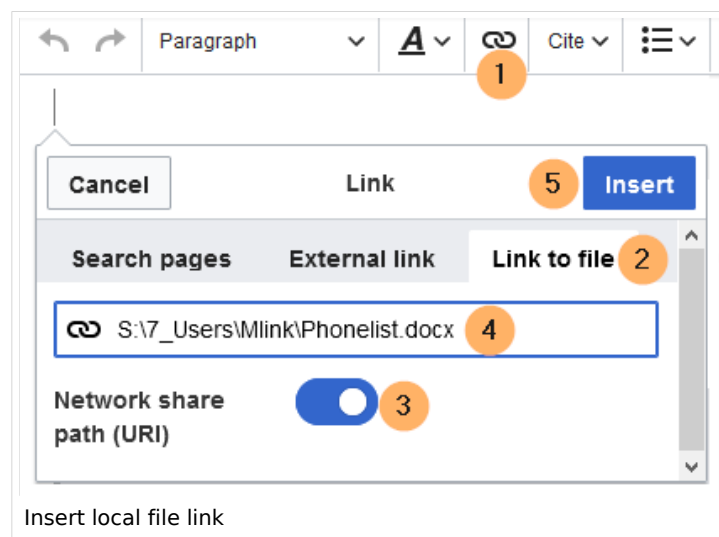
Important! Links to network drives (UNC links) pose a security risk. Therefore, current browsers block these links by default.

It is also possible that your wiki has been configured to disable links to network files.

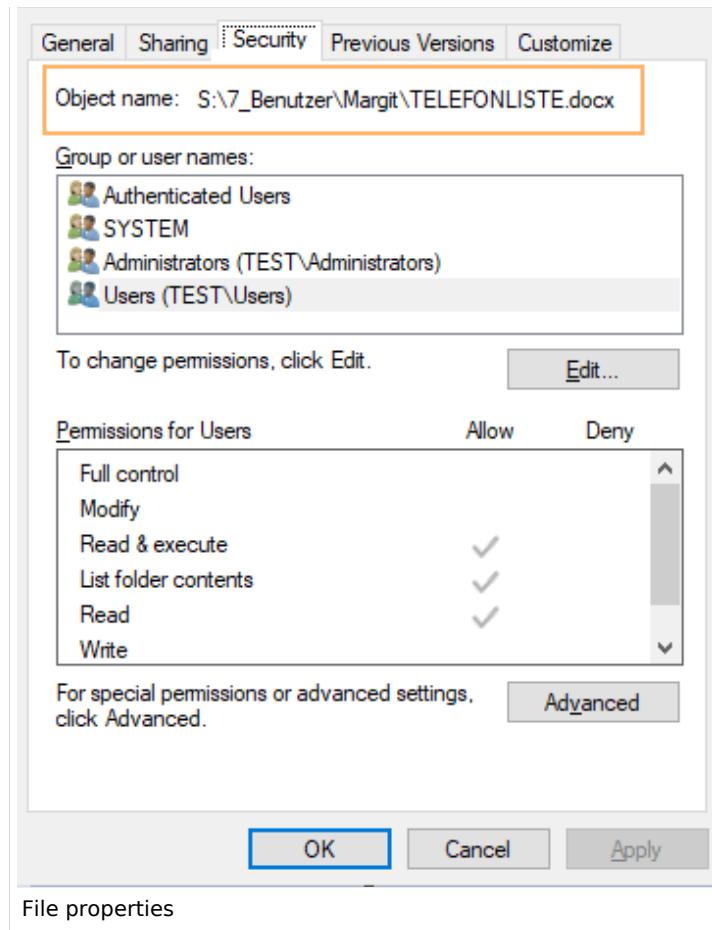
Talk to your IT department if you have any questions about guidelines related to your browser. If your IT department does not offer a solution, files linked in the wiki can still be copied by wiki users and pasted into the address bar of Windows Explorer.

For more info about UNC-Links, see: https://www.mediawiki.org/wiki/UNC_links.

Insert a link to a local network file:



1. **Click** *Insert link* in the visual editor.
2. **Click** on the tab *Link to file*.
3. **Activate** the switch *Netzwerkpfad (URI)*. In the file search field (4) you now see the link symbol.
4. **Enter** the path to your file. You can get this path by right-clicking on the file properties in Windows Explorer. From the tab *Security* you can copy the object name and paste it into the wiki accordingly.



5. **Click** *Insert*. The link is automatically added in the correct format (`file://S:/7_Benutzer/...`). Whether the link can be directly followed through the browser, depends on your browser security settings and installed add-ons. Talk to your IT department to get help if the links are not active.

Related info

- [Reference:BlueSpiceInsertLink](#)
- [Manual:VisualEditor](#)