

## Contents

1. Setup:Installation Guide/System Preparation/Windows/Git .....	2
2. Setup:Installation Guide/System Preparation/Windows/Node.js .....	5

## Setup:Installation Guide/System Preparation/Windows/Git

A [quality version](#) of this page, [approved](#) on *2 August 2021*, was based off this revision.

### Contents

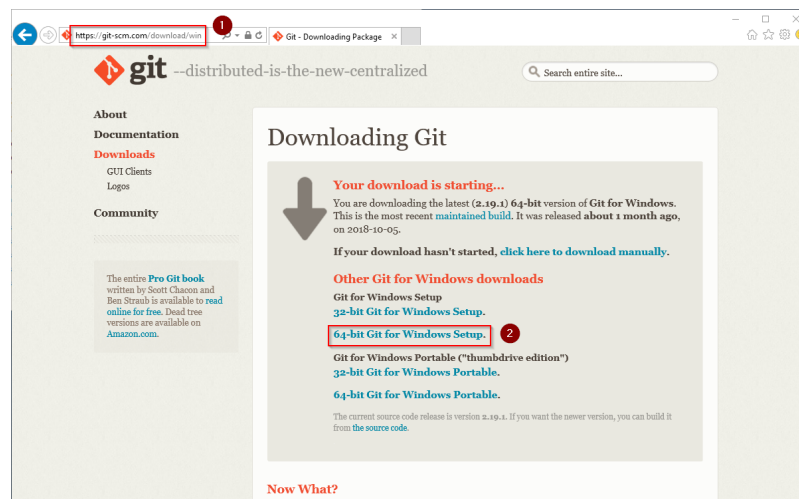
1 Download .....	3
2 Installing Git .....	3
3 Next step .....	5



**Git is an application for software version management. It is required for the installation of Node.js, which in turn is required for the operation of the rendering service "Parsoid" for the Visual Editor. The steps listed here are optional and only required if you want to use them in your BlueSpice installation.**

## Download

In the Internet Explorer, open the [official download page on git-scm.com](https://git-scm.com/download/win) (1). If the optimal download for your operating system does not start automatically, click on "64-bit Git for Windows Setup" (2):



Follow the further download instructions and download the installation package to your hard disk.



Please note that the download on your Windows Server with Internet Explorer only works if you have configured the Internet Explorer Advanced Security Settings in the Server Manager. Please refer to the technical documentation from Microsoft.

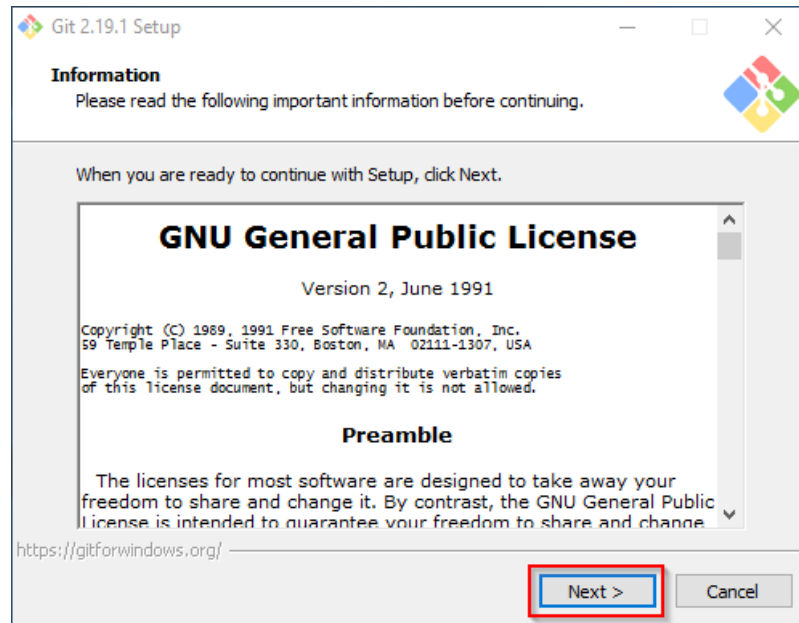


Git version 2.19.1 will be used below as an example. You can download the latest version of Git at the time of installation.

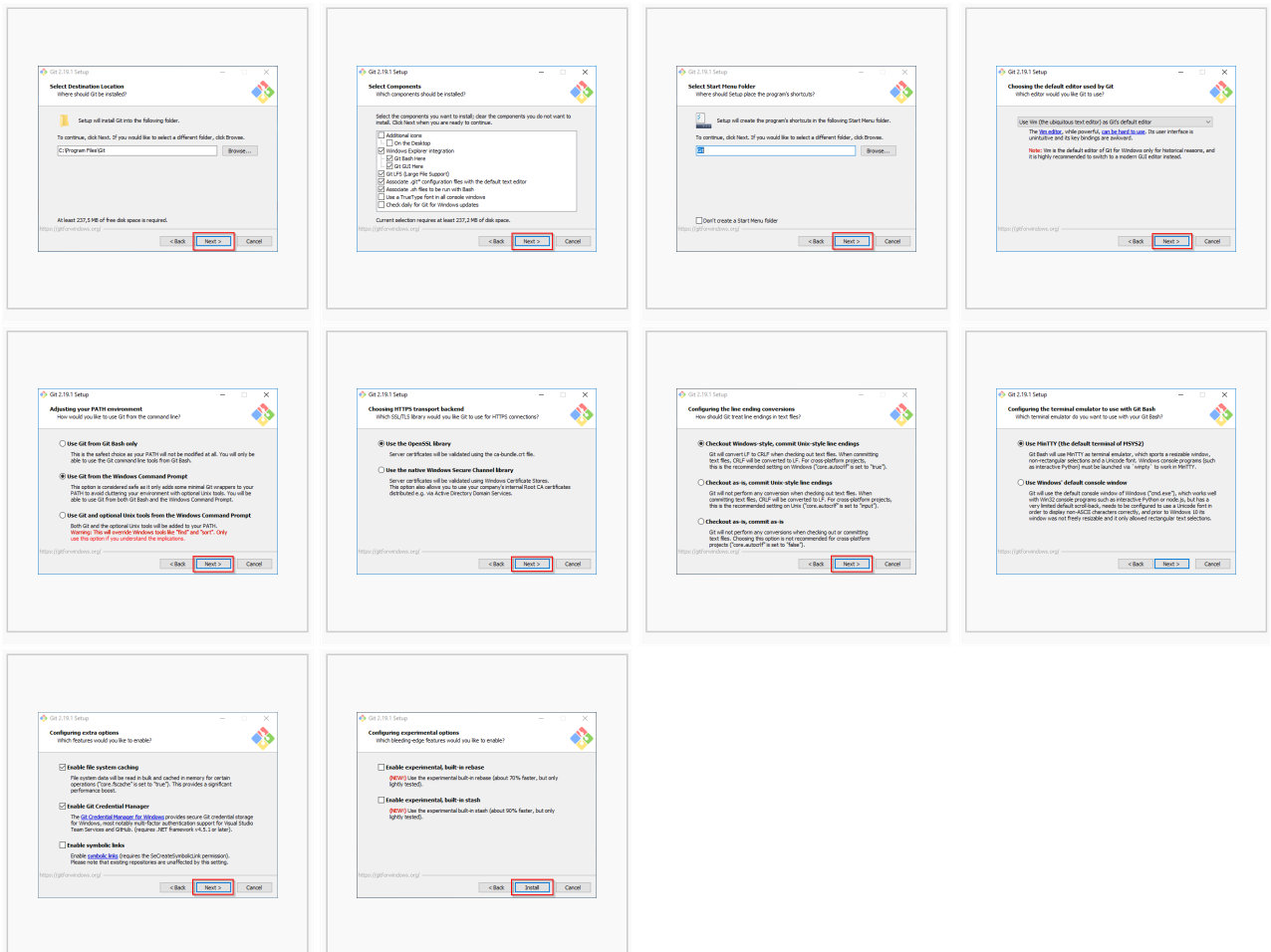
## Installing Git

Open the downloaded Git-2.19.1-64-bit.exe file.

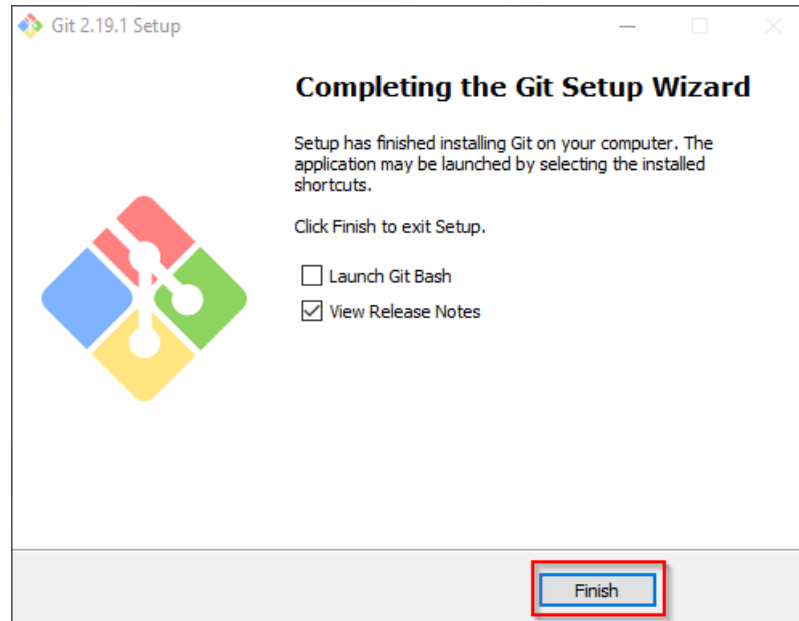
Start the installation by clicking "Next >":



Click, as pictured here, through the further installation steps:



You can close the setup program now:



## Next step

If you have completed all steps successfully, you can delete the previously downloaded file "Git-2.19.1-64-bit.exe" from your hard disk and go to the next step" [Node.js](#)".

## Node.js on Windows

A [quality version](#) of this page, [approved](#) on *9 June 2021*, was based off this revision.

### Contents

<a href="#">1 Download</a>	<a href="#">6</a>
<a href="#">2 Installing Node.js</a>	<a href="#">6</a>
<a href="#">3 Adjusting the Installation path of the Node.js packages</a>	<a href="#">9</a>
<a href="#">4 Installing the Windows Build Tools</a>	<a href="#">10</a>
<a href="#">5 Next step</a>	<a href="#">12</a>



**Node.js is required for the operation of the rendering service "Parsoid" for the Visual Editor. The steps listed here are optional and only required if you plan to use them in your BlueSpice installation.**

## Download

---



This guide uses the Node.js version 10.13.0 as an example. You can download any 10.x version of Node.js.

BlueSpice is NOT compatible with a Node.js version greater than 10.x!

In Internet Explorer, open the [official website of Node.js](#) (1). Download the latest LTS version 10.x.

Follow the further download instructions and download the installation package to your hard drive.



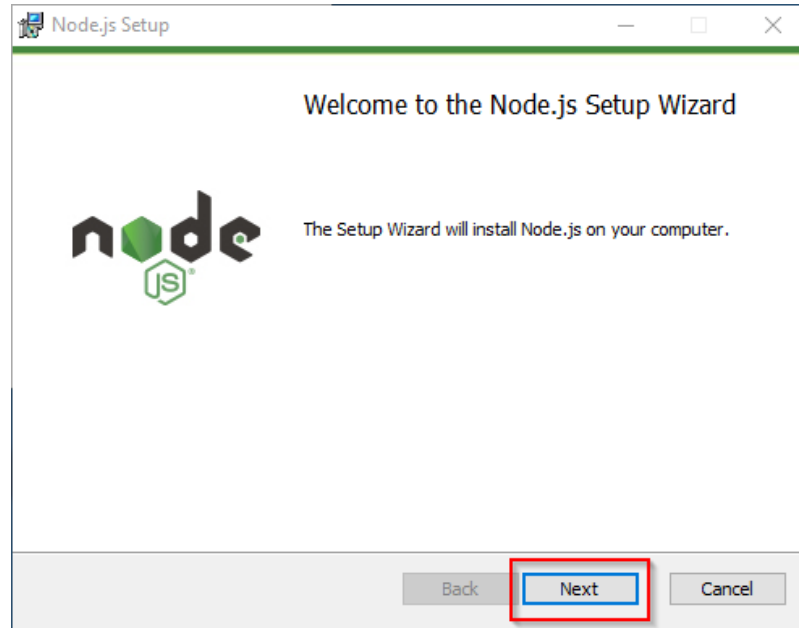
Please note that the download on your Windows Server with Internet Explorer only works if you have configured the Internet Explorer Advanced Security Settings in the Server Manager. Please refer to the technical documentation from Microsoft.

## Installing Node.js

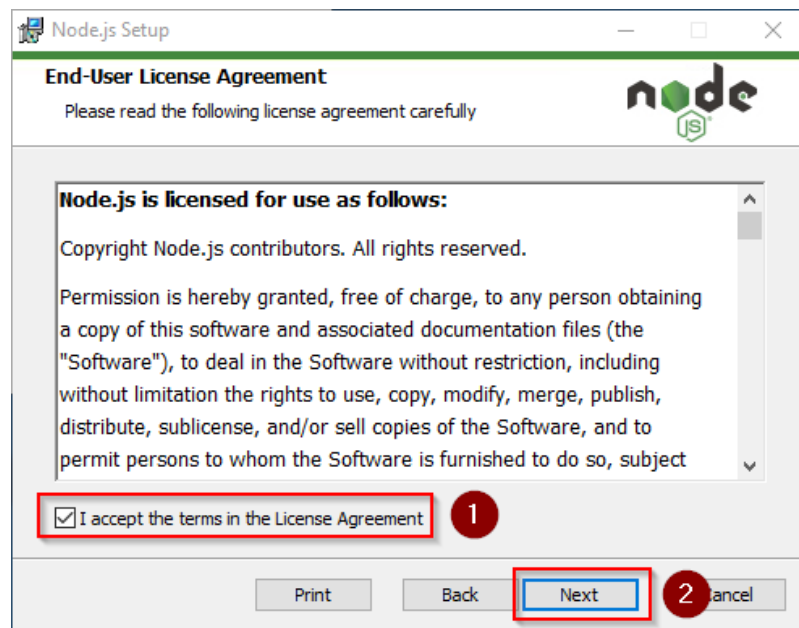
---

Open the downloaded file "node-v10.13.0-x64.msi".

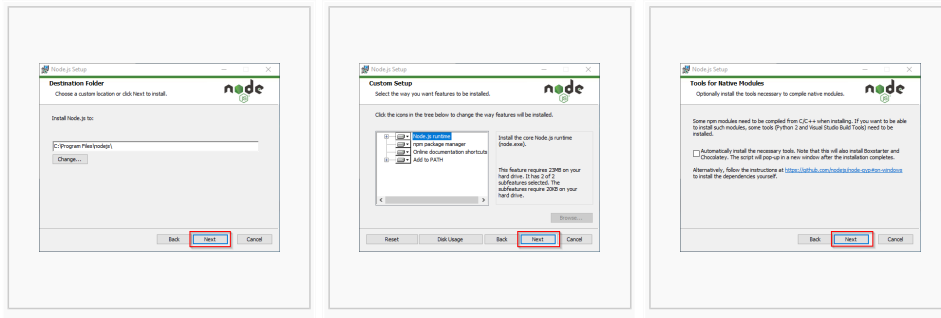
Start the installation by clicking "Next>":



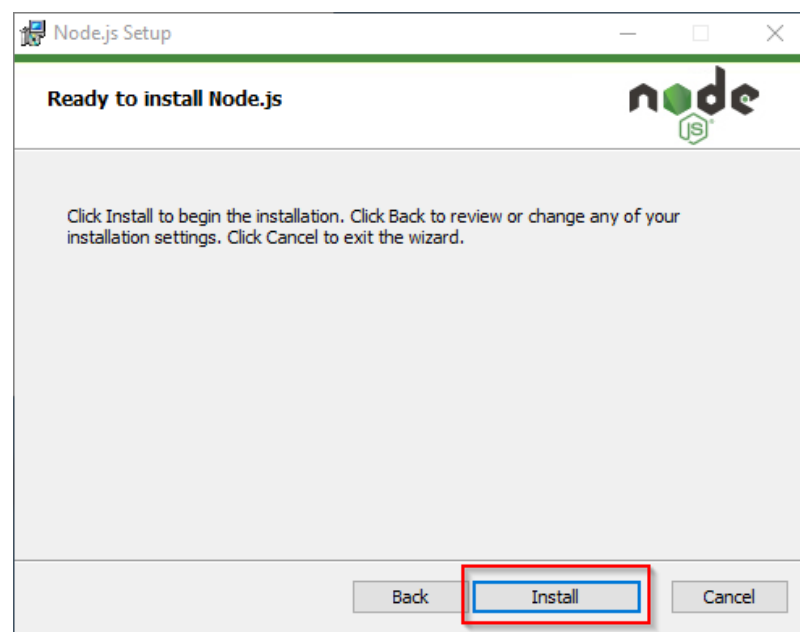
Confirm the license (1) and click "Next >" (2):



Confirm the further installation steps by clicking "Next >":

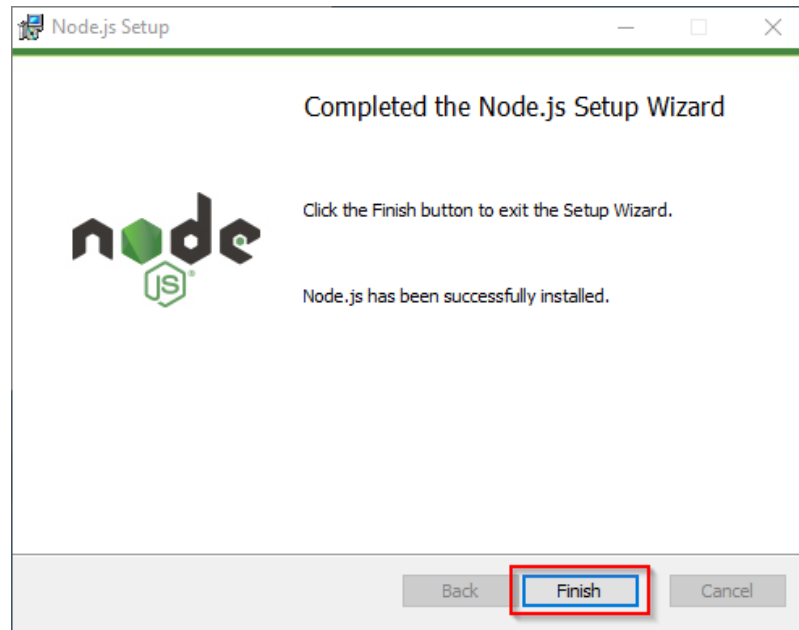


Start the installation by clicking "Install":



You can close the setup program after finishing the installation:

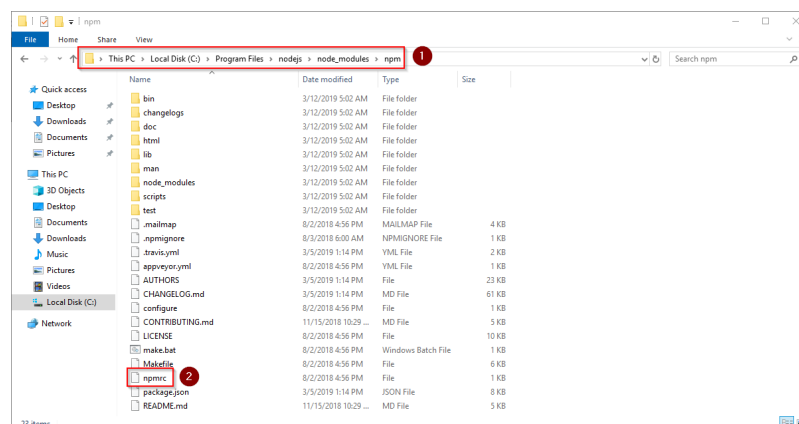




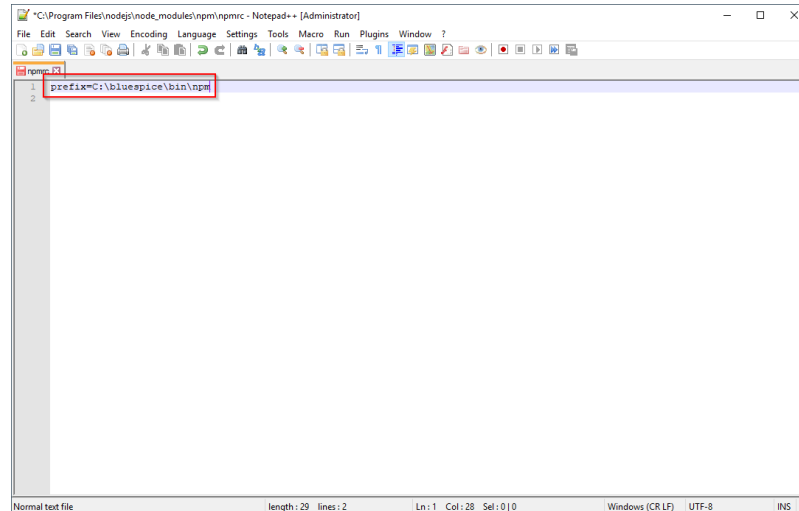
## Adjusting the Installation path of the Node.js packages

By default, Node.js installs its packages in the profile directory of the logged-in user. Since Node.js is intended solely to operate as a user-independent server application under BlueSpice, it is strongly recommended that you change the default path for these packages:

In the Node.js installation folder, open the file `node_modules\npm\npmrc` in a text editor:



Edit this file and enter the new default path for your Node.js packages:



```
1 prefix=C:\bluespice\bin\npm
2
```

Save the file and close the editor.

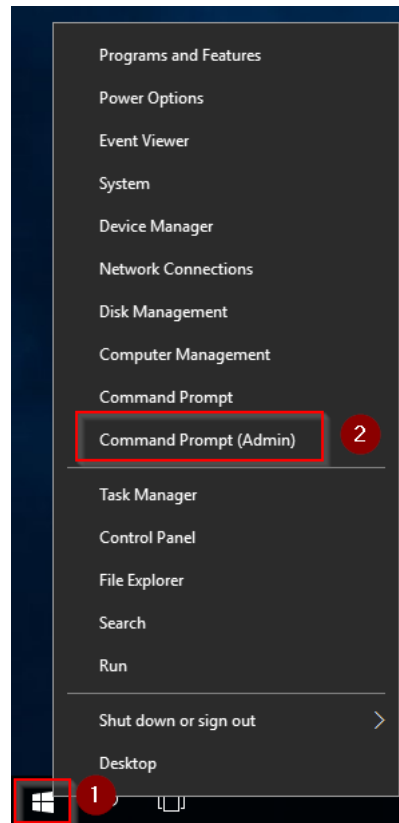


This documentation is based on the [folder structure recommended by us](#). For this reason, the default path for the Node.js packages is set to the folder C:\bluespice\bin\npm. If you have different requirements, you must adapt these paths accordingly.

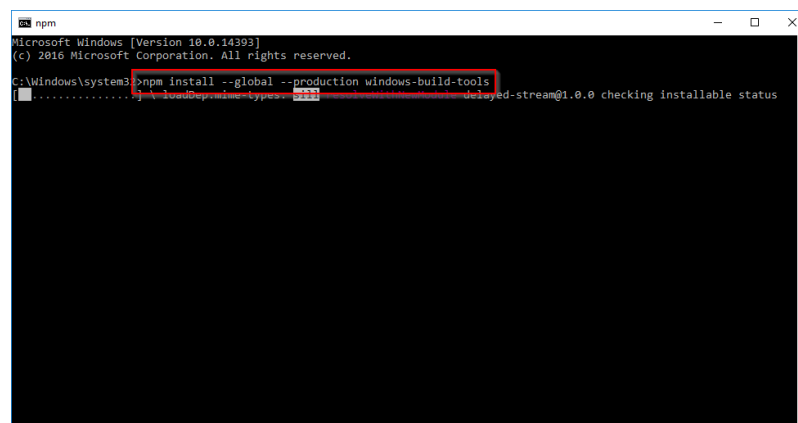
## Installing the Windows Build Tools

The Node.js package windows-build-tools is required for installing the relevant BlueSpice applications.

To install, first open the Windows command prompt as administrator. To do this, right-click "Start" (1) and select "Command Prompt (Administrator)" (2):

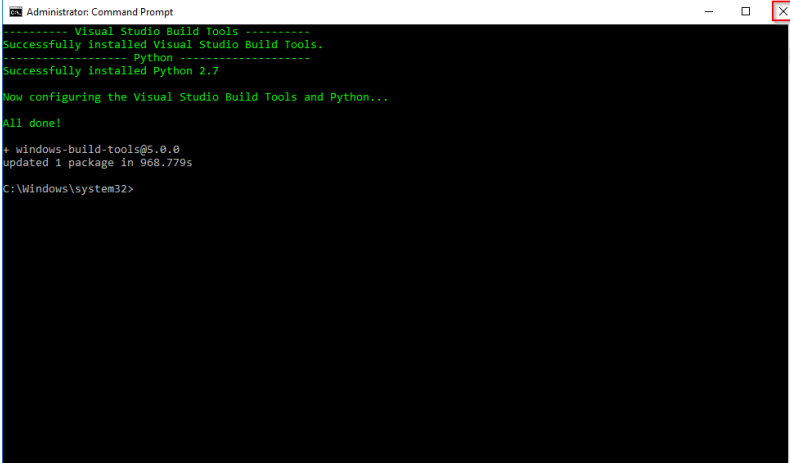


Execute the command "npm install --global --production windows-build-tools":



This command may take a long time and not show any activity for a long time. However, it is still active and must not be canceled! Additionally, Windows Server may restart during the process without warning. In this case, restart the installation as described above.

After successful installation, you can close the command prompt:



```
Administrator: Command Prompt
----- Visual Studio Build Tools -----
Successfully installed Visual Studio Build Tools.
----- Python -----
Successfully installed Python 2.7
Now configuring the Visual Studio Build Tools and Python...
All done!
+ windows-build-tools@5.0.0
updated 1 package in 968.779s
C:\Windows\system32>
```

## Next step

---

If you have completed all steps successfully, you can delete the previously downloaded file "node-v10.13.0-x64.msi" from your hard disk and continue to the next step "[Parsoid](#)".