

Contents

1. Setup:Installation Guide/Upgrade	2
2. Setup:Installation Guide/Advanced/Configuration Folder settings.d	5
3. Setup:Installation Guide/Patch Update	6
4. Setup:Installation Guide/Security Settings/File System Permissions	7
5. Setup:Installation Guide/Services and system configuration/Environment Variables	11
6. Setup:Installation Guide/Upgrade free to pro	13
7. Setup:Installation Manual/Advanced/Folder structure under Windows	14

Setup:Installation Guide/Upgrade

A [quality version](#) of this page, [approved](#) on *23 December 2020*, was based off this revision.

This document describes the upgrade of BlueSpice from version 2.27.x to the current version BlueSpice 3.

Infos for [patch updates](#) and for [switching from Bluespice free to pro](#) are documented separately.

Contents

1 Notes	3
2 Approach	3
3 Setup LocalSettings.php	3
4 Upgrading BlueSpice	4
5 Checking the installation	4

Notes

- Please, read this manual completely and work through the single installation steps one after another.
- For editing the configuration files with a text editor, the files must be saved in UTF-8 coding without BOM (Byte Order Mark).
- The placeholder `<installpath-bluespice>` stands for the path to your BlueSpice installation, e.g. `C:\inetpub\wwwroot\bluespice` (Windows regarding the documentation "[Folder structure under Windows](#)") or `/var/www/bluespice` (Linux).
- The placeholder `<tomcat-webapps` stands for the path to the webapps directory of your Tomcat server, e.g. `C:\Program Files\Apache Software Foundation\Tomcat 8.5\webapps` (Windows) or `/var/lib/tomcat8/webapps` (Linux).

Approach

Make sure that your BlueSpice 2 version is up to date.

It is recommended to first create a complete new installation of BlueSpice 3 in parallel with BlueSpice 2 and then transfer the data to the new system.



First of all, make a complete backup of your installation.

First of all, rename your current installation directory. For example, from `/var/www/bluespice` to `/var/www/bluespice227`.

Then, copy the new program files to the original installation location. Now you should have two directories, for example `/var/www/bluespice227` with the program files of BlueSpice 2.27 and `/var/www/bluespice` with the program files of BlueSpice 3.

Next, uploaded files and configuration files managed by BlueSpice must be transferred to the new installation. Just move the directories `images/` and `extensions/BlueSpiceFoundation/config` from the old installation location to the new one.

Next, the main configuration file must be transferred and adapted. Copy the `LocalSettings.php` file from the old installation location to the new one.

Setup LocalSettings.php

Open the file `<installpath-bluespice>/LocalSettings.php`. Look for the following lines:

```
# End of automatically generated settings.  
# Add more configuration options below.
```

Delete all following lines. If you have made additional configurations - apart from steps outlined in the old installation manual - below these lines, make sure to keep these additional configurations.

Insert the following line at the end of LocalSettings.php:

```
require_once "$IP/LocalSettings.BlueSpice.php";
```

Close and save the file.



Starting with BlueSpice 2.27.1, all default settings as well as the individual modules of BlueSpice are stored. Thus BlueSpice is only integrated with this one line in MediaWiki. For technical information, visit the [documentation for advanced users](#).

Upgrading BlueSpice



Under Windows, make sure that the [environment variables](#) are set correctly to access the php command.



Under Linux, please note that you have to adjust the [file system permissions](#) after running the `update.php`.

Open your command line or terminal and change to the directory `<installpath-bluespice>`. Run the following command there:

```
php maintenance/update.php (Linux)
php maintenance\update.php (Windows)
```

[illegible]

Checking the installation

Open `<bluespice-url>` in your browser. Your BlueSpice upgrade should now be completed.

Logging in with your access data should be possible.

For Advanced Users: Configuration Folder settings.d

A [quality version](#) of this page, [approved](#) on *3 September 2020*, was based off this revision.

Contents

1 Tip for theDocument	6
2 Explanation For the Folder settings.d	6
3 Update-safe changing of default configuration files	6

Tip for the Document

- Please, read this manual completely and work through the single installation steps one after another.
- For editing the configuration files with a text editor, the files must be saved in UTF-8 coding without BOM (Byte Order Mark).
- The placeholder `<installpath-bluespice>` stands for the path to your BlueSpice installation, e.g. `C:\inetpub\wwwroot\bluespice` (Windows) or `/var/www/bluespice` (Linux).



This document provides background information for advanced users. We recommend not to make any changes on BlueSpice, if you are not familiar with the following information.

Explanation For the Folder settings.d

Starting with BlueSpice version 2.27.1, all default settings as well as the modules of BlueSpice are outsourced. All configurations can now be found in separate files in the `/settings.d` folder.

The files in this folder integrate the standard MediaWiki extensions required for BlueSpice, perform recommended default configurations, and also integrate all BlueSpice-related extensions (free or pro).

The files in the `/settings.d` folder are automatically integrated in alphabetical order and are therefore prefixed with numbers.

If you want to add additional configurations yourself, you can save your own files here. For this, it is recommended to use the prefix `001-`.

Additional configurations, which are not packed per default but can be used, can be found at [auf github.com](https://github.com).

Update-safe changing of default configuration files

If you want to change the files delivered by default in the `settings.d` folder, we strongly recommend that you choose the following method so as not to lose this configuration after an update:

- Create a copy of the respective configuration file with the extension `.local.php` - e.g. `020-VisualEditor.local.php`
- Only edit this file

Files with this file extension are generally preferred in the loading process.

Setup:Installation Guide/Patch Update

A [quality version](#) of this page, [approved](#) on *9 March 2021*, was based off this revision.

For large version jumps (e.g., BlueSpice 2.27.3 to 3.1.10), a new installation is generally recommended.

For a patch update (for example, version 3.1.x to a higher version 3.1.x) you can simply follow these steps:

1. **Create a backup:** Pull a dump of the database and save it together with the complete codebase to a backup location of your choice.
2. **Renew the codebase:** Overwrite the codebase of the current version with the new codebase of the higher version.
3. **Compare:** After the overwrite, please compare the following files and folder. Copy from your backup location if necessary
 1. If you have a custom skin, please check the `skins/` folder.
 2. `LocalSettings.php`
 3. `extensions/BlueSpiceFoundation/config`
 4. `settings.d/` In `settings.d`, especially `*.local.php` files. Copy from your backup if necessary.
4. **Run the update:**
 1. Open a console and go to the installation folder (on the `LocalSettings.php` level)
 2. Then enter the following command: `php maintenance/update.php`

If you use Linux as the basis of your BlueSpice installation, please note that file system permissions may be lost when overwriting the codebase. More information can be found under [File System Permissions](#).

Note: In a patch update, usually no database schemas have changed. It may not be necessary to run `update.php`.

File System Permissions

A [quality version](#) of this page, [approved](#) on *27 October 2021*, was based off this revision.

Contents

1 Tips for this Document	8
2 Affected Folders	8
3 Assignment of Permissions with Windows	8
4 Assignment of Permissions with Linux	9

For trouble-free usage of your BlueSpice installation, the web server requires write permissions to several folders of the file system. However, it is recommended to keep the rights for all other files and folders to a minimum. This document shows you the relevant folders and the correct permissions setting.

Tips for this Document

- Please, read this manual completely and work through the single installation steps one after another.
- For editing the configuration files with a text editor, the files must be saved in UTF-8 coding without BOM (Byte Order Mark).
- The placeholder `<installpath-bluespice>` stands for the path to your BlueSpice installation, e.g. `C:\inetpub\wwwroot\bluespice` (Windows) or `/var/www/bluespice` (Linux).

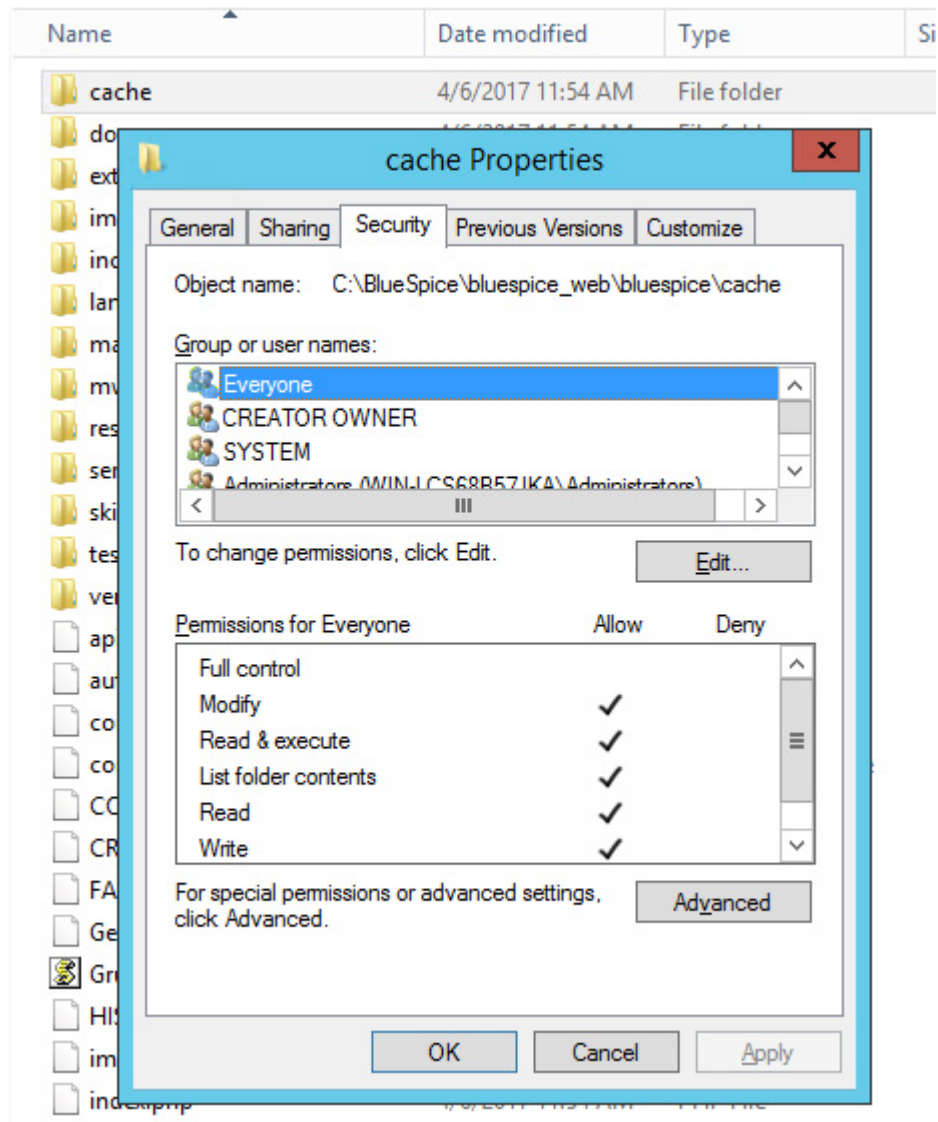
Affected Folders

The folders, which require write permissions, are:

- `<installpath-bluespice>/cache`
- `<installpath-bluespice>/images`
- `<installpath-bluespice>/extensions/BlueSpiceFoundation/config`
- `<installpath-bluespice>/extensions/BlueSpiceFoundation/data`
- `<installpath-bluespice>/extensions/Widgets/compiled_templates` (**only BlueSpice pro**)

Assignment of Permissions with Windows

Assign "change" rights for this folder for the local user "Everyone".



Assignment of Permissions with Linux

Here you can assign rights much more strictly, which is also recommended. Transfer the directory `<installpath-bluespice>` recursively to the user root (CHMOD for Files 644, CHMOD for Directories 755) and after this, transfer the mentioned directory recursively to the user and the group, under which the Apache Web Server runs (Debian/Ubuntu e.g. "www-data").

In the following, we provide a bash script, which works through this tasks for you with only one command.

To do so, create the file `/usr/local/bin/setWikiPerm` and copy the following code into this file:

```
#!/bin/bash

WWW_USER="www-data"
WWW_GROUP="www-data"

WWW_HOME=`eval echo ~$WWW_USER`
```

```
WWW_CFG=$WWW_HOME/.config

if [ $# -eq 0 ]; then
    echo "You must enter the path of your MediaWiki installation."
    exit
elif [ ! -d $1 ]; then
    echo "$1 does not exist or is no path."
    exit
fi

if [ ! -f $1/LocalSettings.php ]; then
    echo "$1 contains no Localsettings.php"
    exit
fi

PATH=`echo "$1" | sed -e 's#/###'`

/usr/bin/find $PATH -type d -exec /bin/chmod 755 {} \;
/usr/bin/find $PATH -type f -exec /bin/chmod 644 {} \;

/bin/chown -R root:root $PATH

pathes=(
    "$PATH/cache" \
    "$PATH/images" \
    "$PATH/_sf_archive" \
    "$PATH/_sf_instances" \
    "$PATH/extensions/BlueSpiceFoundation/data" \
    "$PATH/extensions/BlueSpiceFoundation/config" \
    "$PATH/extensions/Widgets/compiled_templates" \
)

for i in "${pathes[@]"; do
    if [ -d $i ]; then
        /bin/chown -R $WWW_USER:$WWW_GROUP $i
    fi
done

if [ ! -d $WWW_CFG ]; then
    /bin/mkdir $WWW_CFG
fi

/bin/chown -R $WWW_USER:$WWW_GROUP $WWW_CFG

/usr/bin/find $PATH/extensions -iname 'create_pygmentize_bundle' -exec /bin/chmod +x {} \;
/usr/bin/find $PATH/extensions -iname 'pygmentize' -exec /bin/chmod +x {} \;
/usr/bin/find $PATH/extensions -name 'lua' -type f -exec /bin/chmod 755 {} \;
```

If needed, replace the content of the variables

```
WWW_USER="www-data"
WWW_GROUP="www-data"
```

with the appropriate user and group of your distribution.

After this, assign CHMOD 755 to this file. Now you can run the script and let it do the complete permission setting automatically with the following command:

```
setWikiPerm <installpath-bluespice>
```



Note that when the `update.php` is executed on the console, the rights can be partially discarded. For this reason, set the rights to "`update.php`" again.

Environment Variables (Windows)

A [quality version](#) of this page, [approved](#) on *13 September 2019*, was based off this revision.

Contents

1	Reviewing paths	12
2	Entering environmental variables	12

For using console commands for PHP and MySQL in a comfortable way, some settings in the environment variables should be done. This document describes how to do this.

Reviewing paths

You need to know in which paths of your Windows installation the following files are located:

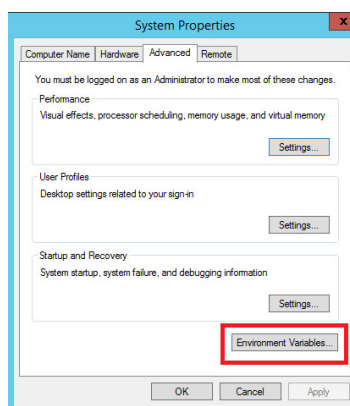
- php.exe
- mysql.exe

This document uses these paths as **an example**:

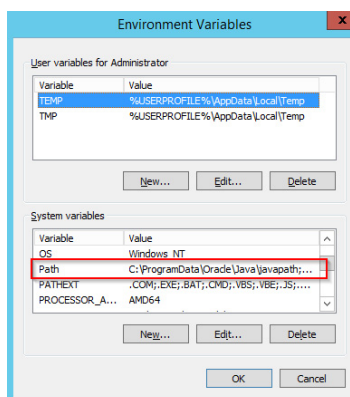
- C:\Program Files (x86)\PHP\php-5.6.30\php.exe
- C:\Program Files\MariaDB 10.1\bin\mysql.exe

Entering environmental variables

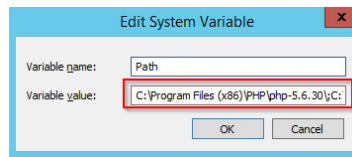
1. Press the key combination "Windows+R" to start the input request
2. Start the program "SystemPropertiesAdvanced.exe"
3. Click at "Environment Variables"



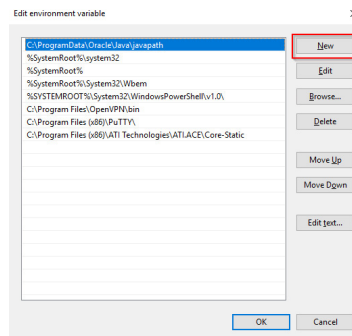
4. Open the variable "Path" at "System variables" with a double click



5. With Windows 2012: In the line "Value of Variables", add the paths to php.exe and mysql.exe, separated by semicolon, directly at the beginning of the line. Regarding the path example, this would be "**C:\Program Files (x86)\PHP\php-5.6.30\;C:\Program Files\MariaDB 10.1\bin\;**"



6. Windows 2016 and above: Add two new entries with their respective pathnames



7. Close all windows by clicking "OK"
8. Restart the command line

Now you should be able to call up the commands "php" and "mysql" without problems in the command line.

Upgrade 3.x free to 3.x pro

A [quality version](#) of this page, [approved](#) on *2 August 2021*, was based off this revision.

To upgrade from **BlueSpice free 3.x to BlueSpice pro 3.x** (under Linux), follow these instructions:

1. **Create backup:** Make a database dump and save it together with the complete codebase to another storage location.
2. **Patch-update BlueSpice free (optional):** Check your current version on the Special: Version page. Compare your version with the current version of BlueSpice free. If you have not installed a relatively current version, apply a [patch update](#).
3. **Replace the codebase:** Overwrite the codebase of your current version with the new codebase of BlueSpice pro.
4. **Start the update:**
 1. Open a console and switch to the installation directory (the level of LocalSettings.php)
 2. Execute: `php maintenance/update.php`

5. Re-index the search:

1. Delete search index: `php extensions/BlueSpiceExtendedSearch/maintenance/initbackends.php`
2. Create new search index: `php extensions/BlueSpiceExtendedSearch/maintenance/rebuildIndex.php --quick`
3. Run jobs: `php maintenance/runJobs.php`

Folder structure under Windows

A [quality version](#) of this page, [approved](#) on *17 October 2018*, was based off this revision.

Contents

1 Preface	15
2 Folder structure	15
3 Folder names for program installations	15

Preface

Microsoft Windows distributes program installations and configurations, the Webroot under IIS etc. to various folders in the file system. Since BlueSpice is a web application based on PHP, it is not always easy to use the Windows default system paths in the application.

For this reason, we recommend creating your own folder structure for BlueSpice, all related data and additional program installations.

In the following we describe a proven folder structure. This is recommended by us.

Folder structure

In the following, "\bluespice\" is defined as the base directory for the installation in the root directory of the drive (e.g. C:\bluespice or D:\bluespice).

The folder structure is based on Unix operating systems:

```
bluespice/
├── backup/           # for backups
├── bin/              # for additional programs and own scripts
├── etc/              # for configuration files
├── opt/
│   └── bluespice/
│       ├── cache/    # BlueSpice cache
│       ├── images/   # File uploads
│       └── widgets/  # Rendered widgets
├── tmp/              # Temporary files
└── var/
    ├── log/          # LOG files of the web server
    └── www/           # Actual BlueSpice application
```

Folder names for program installations

When installing programs in \bluespice\, please make sure to install these programs in subfolders that do not contain special characters and/or spaces.