

Contents

1. Setup:Installation Manual/Optimization/Cronjobs	2
2. Setup:Installation Guide/Services and system configuration/Environment Variables	4
3. Setup:Installation Manual/Advanced/Folder structure under Windows	6

Setup:Installation Manual/Optimization/Cronjobs

A [quality version](#) of this page, [approved](#) on *17 December 2020*, was based off this revision.

Contents

1	Tips for this Document	3
2	runJobs.php	3
3	processBsEmailBatch.php	3

This document describes cronjobs and related configurations, which should be set for your BlueSpice (depending on the used version).

Tips for this Document

- Please, read this manual completely and work through the single installation steps one after another.
- For editing the configuration files with a text editor, the files must be saved in UTF-8 coding without BOM (Byte Order Mark).
- The placeholder `<installpath-bluespice>` stands for the path to your BlueSpice installation, e.g. `C:\inetpub\wwwroot\bluespice` (Windows regarding the documentation "[Folder structure under Windows](#)") or `/var/www/bluespice` (Linux).
- The placeholder `<tomcat-webapps` stands for the path to the webapps directory of your Tomcat server, e.g. `C:\Program Files\Apache Software Foundation\Tomcat 8.5\webapps` (Windows) or `/var/lib/tomcat8/webapps` (Linux).

runJobs.php

Time-consuming processes will be moved to a processing queue in the background of BlueSpice. With every page impression, a part of these will be processed. For the case that there are lots of processes in the queue and there are relatively little page impressions, the tasks will not be processed promptly.

For this reason, the queue should be processed regularly by cronjob.

Now create a cronjob (Windows: "Scheduled task") depending on your operating system. The command to execute is:

```
php <installpath-bluespice>/maintenance/runJobs.php (Linux)
php.exe <installpath-bluespice>\maintenance\runJobs.php (Windows)
```



It is recommended to specify the complete path to php.exe under Windows. For more information, see the [environment variables](#) document.

Execute the cronjob every **10 minutes**.

processBsEmailBatch.php

For reports via email sent from MediaWiki, please create a cronjob and run it daily. The command for this is:

```
php <installpath-bluespice> /extensions/BlueSpiceEchoConnector/maintenance
/processBsEmailBatch.php (Linux)
php.exe <installpath-bluespice> \extensions\BlueSpiceEchoConnector\maintenance\processB
sEmailBatch.php (Windows)
```



It is recommended to specify the complete path to php.exe under Windows. For more information, see the [environment variables](#) document.

Environment Variables (Windows)

A [quality version](#) of this page, [approved](#) on *13 September 2019*, was based off this revision.

Contents

1	Reviewing paths	5
2	Entering environmental variables	5

For using console commands for PHP and MySQL in a comfortable way, some settings in the environment variables should be done. This document describes how to do this.

Reviewing paths

You need to know in which paths of your Windows installation the following files are located:

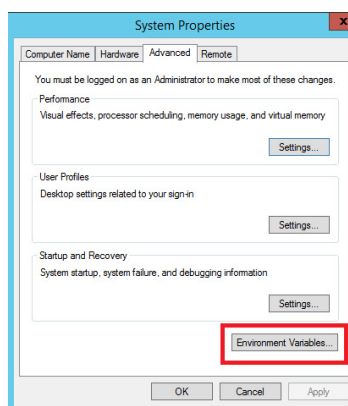
- php.exe
- mysql.exe

This document uses these paths as **an example**:

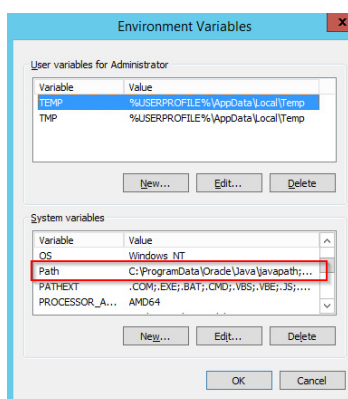
- C:\Program Files (x86)\PHP\php-5.6.30\php.exe
- C:\Program Files\MariaDB 10.1\bin\mysql.exe

Entering environmental variables

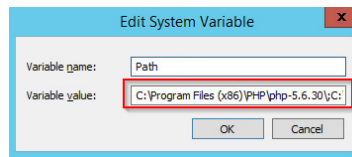
1. Press the key combination "Windows+R" to start the input request
2. Start the program "SystemPropertiesAdvanced.exe"
3. Click at "Environment Variables"



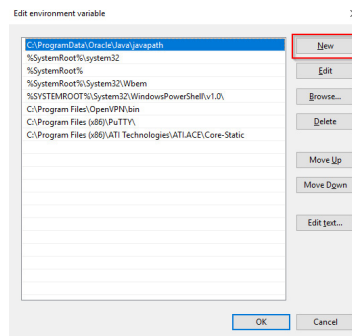
4. Open the variable "Path" at "System variables" with a double click



5. With Windows 2012: In the line "Value of Variables", add the paths to php.exe and mysql.exe, separated by semicolon, directly at the beginning of the line. Regarding the path example, this would be "**C:\Program Files (x86)\PHP\php-5.6.30\;C:\Program Files\MariaDB 10.1\bin\;**"



6. Windows 2016 and above: Add two new entries with their respective pathnames



7. Close all windows by clicking "OK"
8. Restart the command line

Now you should be able to call up the commands "php" and "mysql" without problems in the command line.

Folder structure under Windows

A [quality version](#) of this page, [approved](#) on *17 October 2018*, was based off this revision.

Contents

1 Preface	7
2 Folder structure	7
3 Folder names for program installations	7

Preface

Microsoft Windows distributes program installations and configurations, the Webroot under IIS etc. to various folders in the file system. Since BlueSpice is a web application based on PHP, it is not always easy to use the Windows default system paths in the application.

For this reason, we recommend creating your own folder structure for BlueSpice, all related data and additional program installations.

In the following we describe a proven folder structure. This is recommended by us.

Folder structure

In the following, "\bluespice\" is defined as the base directory for the installation in the root directory of the drive (e.g. C:\bluespice or D:\bluespice).

The folder structure is based on Unix operating systems:

```
bluespice/
├── backup/           # for backups
├── bin/              # for additional programs and own scripts
├── etc/              # for configuration files
├── opt/
│   └── bluespice/
│       ├── cache/    # BlueSpice cache
│       ├── images/   # File uploads
│       └── widgets/  # Rendered widgets
├── tmp/              # Temporary files
└── var/
    ├── log/          # LOG files of the web server
    └── www/          # Actual BlueSpice application
```

Folder names for program installations

When installing programs in \bluespice\, please make sure to install these programs in subfolders that do not contain special characters and/or spaces.