

# Setup:Installation Manual/Services and system configuration /Memcached

A [quality version](#) of this page, [approved](#) on *17 October 2018*, was based off this revision.

## Contents

1	Tips for this Document	2
2	Linux	2
2.1	Installation	2
2.2	Configuration	2
2.3	Check the Server	2
3	Windows	2
3.1	Requirements	3
3.2	Download	3
3.3	Installation	3
3.4	Starting the MemCached Manager	3
3.5	Configuration	3

This document describes how to set up the memcached server, with which you can achieve some speed optimization. For the configuration of BlueSpice, also read the paragraph "Activate Memcached" in the "Caching" article.

## Tips for this Document

---

- Please, read this manual completely and work through the single installation steps one after another.
- For editing the configuration files with a text editor, the files must be saved in UTF-8 coding without BOM (Byte Order Mark).

## Linux

---

### Installation

Install the memcached server in the package manager of your distribution.

### Configuration

Open the file that contains the memcached configuration (for example, `/etc/memcached.conf` under Debian / Ubuntu). Locate the `-m` argument and increase the amount of memory available depending on the capabilities of your server:

```
-m 1024
```

Save and close the file, and restart memcached.

### Check the Server

Verify that the memcached server is running:

```
netstat -tulpn | grep 11211
```

If you receive an output that is similar to this, memcached has started successfully:

```
root@bluespice:/var/www/bluespice# netstat -tulpn | grep 11211
tcp  0 0 127.0.0.1:11211  0.0.0.0:*        LISTEN      15163/memcached
udp  0 0 127.0.0.1:11211  0.0.0.0:*        15163/memcached
root@bluespice:/var/www/bluespice#
```

## Windows

---

The use of Nick Pirocanac's MemCachedD Manager is highly recommended. This makes the configuration very simple.

## Requirements

An installed .NET Framework version 3.5 is required for the MemCachedD Manager.

## Download

Download the MemCachedD Manager from [software.informer.com](http://software.informer.com).

## Installation

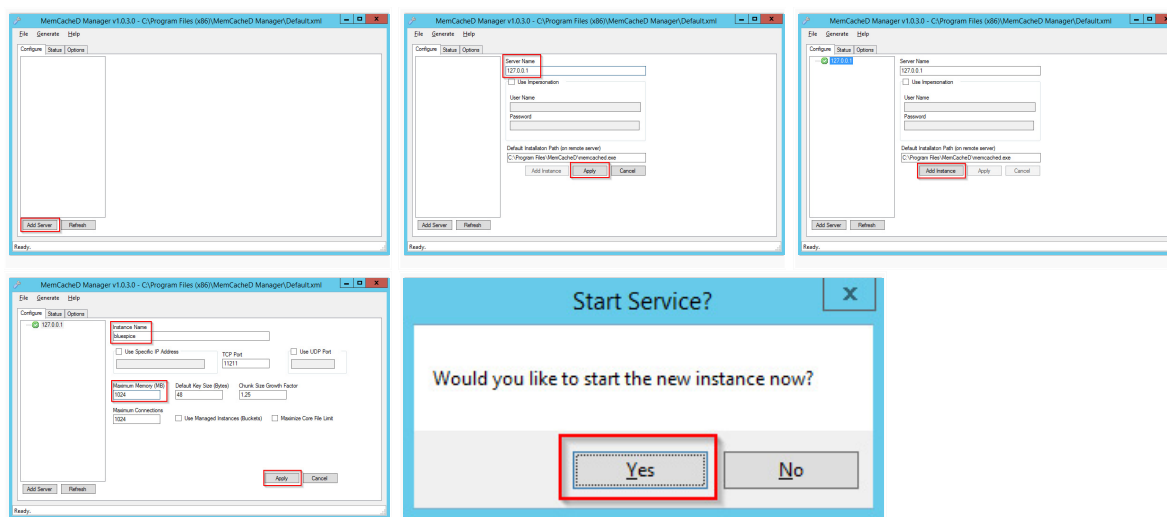
During the installation you have hardly any setting possibilities, so you can "click" through the installation process without any changes.

## Starting the MemCachedD Manager

Always start the MemCachedD Manager from the start menu **as administrator** (right click -> Run as administrator)!

## Configuration

1. In MemCachedD Manager, click "Add Server"
2. Enter the local IP "127.0.0.1" under "Server Name" and click on "Apply"
3. Click "Add Instance"
4. Enter any desired name under "Instance Name"
5. Under Maximum Memory, increase the available memory depending on the capabilities of your server
6. Click "Apply"
7. Start the new created instance by clicking on "Yes"



The Memcached Server is now installed and configured.