

Contents

1. Setup:Installation Manual/System Configuration/Environment Variables	2
2. Setup:Installation Guide/Services and system configuration/Environment Variables	2

Setup:Installation Manual/System Configuration/Environment Variables

Redirect to:

- [Setup:Installation Guide/Services and system configuration/Environment Variables](#)

Environment Variables (Windows)

A [quality version](#) of this page, [approved](#) on *13 September 2019*, was based off this revision.

Contents

1	Reviewing paths	3
2	Entering environmental variables	3

For using console commands for PHP and MySQL in a comfortable way, some settings in the environment variables should be done. This document describes how to do this.

Reviewing paths

You need to know in which paths of your Windows installation the following files are located:

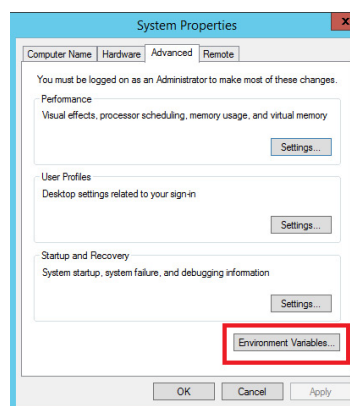
- php.exe
- mysql.exe

This document uses these paths as **an example**:

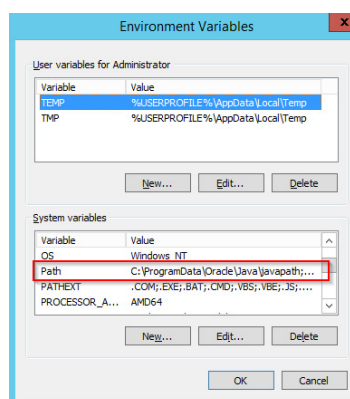
- C:\Program Files (x86)\PHP\php-5.6.30\php.exe
- C:\Program Files\MariaDB 10.1\bin\mysql.exe

Entering environmental variables

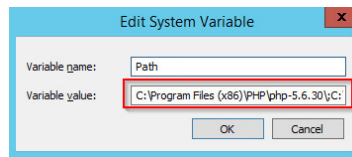
1. Press the key combination "Windows+R" to start the input request
2. Start the program "SystemPropertiesAdvanced.exe"
3. Click at "Environment Variables"



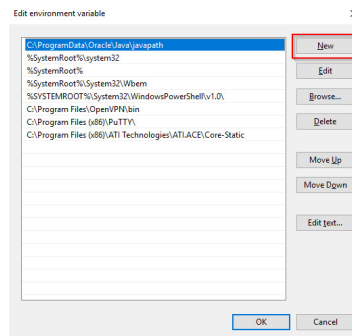
4. Open the variable "Path" at "System variables" with a double click



5. With Windows 2012: In the line "Value of Variables", add the paths to php.exe and mysql.exe, separated by semicolon, directly at the beginning of the line. Regarding the path example, this would be "**C:\Program Files (x86)\PHP\php-5.6.30\;C:\Program Files\MariaDB 10.1\bin\;**"



6. Windows 2016 and above: Add two new entries with their respective pathnames



7. Close all windows by clicking "OK"
8. Restart the command line

Now you should be able to call up the commands "php" and "mysql" without problems in the command line.