



BlueSpice
MediaWiki

BlueSpice 2.27.3 - Update



Table of contents

1. Update MediaWiki	3
2. Update BlueSpice	7
3. Configuration of the webservice	12
3.1. Extended Search	13
3.2. PDF-Export	16
3.3. VisualDiff	19
3.4. LatexRenderer	20
4. Additional settings and optimization	21
4.1. Caching	22
4.2. Cronjobs	25
4.3. Time Zone	27
5. Further system configuration	28
5.1. Apache Tomcat	29
5.2. Memcached	33
5.3. Improve speed performance	36
5.4. Environment Variables	39
6. Security Settings	41
6.1. File System Permissions	42
6.2. Deactivating installcheck file	45
6.3. Save Directories	46
7. Advanced configuration	47
7.1. Configuration Folder settings.d	48
7.2. Activation and deactivation of BlueSpice extensions	49
7.3. Rebuilding the search index	53
8. SyntaxHighlight GeSHi	54

1. Update MediaWiki

Contents	
1 Notes	3
2 Requirements	3
3 Backup	3
3.1 Backup Database	3
3.2	4
3.3 Backup File System	4
4 Download MediaWiki	4
5 Unzip and copy MediaWiki	4
6 Setup LocalSettings.php	4
7 Update database schema	5
8 Check installation	6
9 Next Steps	6

This document describes the update of MediaWiki from version 1.23.x to 1.27.x as a basis for the installation of BlueSpice 2.27.x

Notes

- Please read this manual completely and follow the installation steps in the given order.
- For editing the configuration files in a text editor, it is necessary to save the files in UTF-8 code without BOM (Byte Order Mark).
- The placeholder `<installpath-bluespice>` is representative for the path to your BlueSpice installation, e.g. `C:\inetpub\wwwroot\bluespice` (Windows) oder `/var/www/bluespice` (Linux).
- The placeholder `<bluespice-url>` is representative for the URL of your BlueSpice installation, e.g. <http://localhost/bluespice>.

Requirements

The requirements for the MediaWiki version 1.27.x can be found in the corresponding [installation manual](#).

Backup

It is absolutely necessary to create a backup copy of your current installation before updating the wiki.

Backup Database

To back up your database, use the on-board "mysqldump" program from MySQL / MariaDB: To do this, please open a console, change the directory `<installpath-bluespice>` and save the database using the following command:

```
mysqldump -u <username> -p --lock-tables <database> > database.sql
```

For <username> please use your administrative database user (usually "root"). For <database> use the database name of your MediaWiki/BlueSpice installation.



Under Windows, please make sure that the [environment variables](#) are set correctly to access the `mysqldump` command.

Backup File System

Save the complete directory <installpath-bluespice>, which now contains the database image, to a different location on your server.

For security reasons, immediately delete the file <installpath-bluespice>/database.sql.

Download MediaWiki

Please download MediaWiki 1.27.x under www.mediawiki.org.

Unzip and copy MediaWiki

Unzip the downloaded MediaWiki archive. Please make sure that all relevant content is placed in **one** subfolder (e.g. mediawiki-1.27.1). Move the content of this subfolder to <installpath-bluespice> and overwrite the existing files.

Setup LocalSettings.php

Open the file <installpath-bluespice>/LocalSettings.php. Look for the following lines:

```
# End of automatically generated settings.  
# Add more configuration options below.
```

Insert the following lines right before the code above:

```
wfLoadSkin( 'CologneBlue' );  
wfLoadSkin( 'Modern' );  
wfLoadSkin( 'MonoBook' );  
wfLoadSkin( 'Vector' );
```

Also add the following line at the end of the code:

```
return;
```

Also search **before** the above mentioned lines after lines that contain `require_once`. Please delete these lines.

Update database schema

Open your command line or terminal in <installpath-bluespice> and run the following command there:

```
php maintenance/update.php (Linux)
php maintenance\update.php (Windows)
```



Under Windows, make sure that the [environment variables](#) are set correctly to access the php command.



Under Linux, please note that you have to adjust the [file system permissions](#) after running the update.php.

When the script is finished with the "Done" message, proceed to the next step.

```
...event_agent field does not exist in echo_event table, skipping modify field patch.
Modifying event_variant field of table echo_event ...done.
Modifying event_extra field of table echo_event ...done.
Modifying event_agent_ip field of table echo_event ...done.
...have etp_id field in echo_target_page table.
...have notification_bundle_base field in echo_notification table.
...echo_event table does not contain event_timestamp field.
...have eeb_event_hash field in echo_email_batch table.
...have event_page_id field in echo_event table.
...index echo_event_type already set on echo_event table.
...index echo_user_timestamp already set on echo_notification table.
Creating titlekey table...ok.
Rebuilding titlekey table...
... 1 ok.
...hitcounter table does not exist, skipping modify field patch.
Creating hit_counter_extension table ...done.
Creating hit_counter table ...done.
...page table does not contain page_counter field.
Creating bs_editnotifyconnector table ...done.
Creating bs_namespacemanager_backup_page table ...done.
Creating bs_namespacemanager_backup_revision table ...done.
Creating bs_namespacemanager_backup_text table ...done.
Adding page_content_model field to table bs_namespacemanager_backup_page ...done.
Adding rev_shal field to table bs_namespacemanager_backup_revision ...done.
Adding rev_content_model field to table bs_namespacemanager_backup_revision ...done.
Creating bs_permission_templates table ...done.
Creating bs_dashboards_configs table ...done.
Creating bs_usagetracker table ...done.
Creating bs_pagetemplate table ...done.
Creating bs_pageassignments table ...done.
...se text field does not exist in bs_saferedit table, skipping modify field patch.
Creating bs_readers table ...done.
...have readers_ts field in bs_readers table.
...site_stats is populated...done.
Checking existence of old default messages...done.
Populating rev_len column
...doing rev_id from 1 to 200
Populating ar_len column
...archive table seems to be empty.
rev_len and ar_len population complete [0 revision rows, 0 archive rows].
Populating rev_shal column
...doing rev_id from 1 to 200
Populating ar_shal column
...archive table seems to be empty.
Populating ar_shal column legacy rows
rev_shal and ar_shal population complete [0 revision rows, 0 archive rows].
Populating img_shal field

Done 0 files in 0.0 seconds
Fixing protocol-relative entries in the externallinks table...
Done, 0 rows updated.
Populating fa_shal field from fa_storage_key

Done 0 files in 0.0 seconds
Updating *_from_namespace fields in links tables.
...doing page_id from 1 to 200
Purging caches...done.

Done in 1.6 s.
root@bluespice:/var/www/bluespice#
```

Check installation

Open <bluespice-url> in your browser. You should now have an updated MediaWiki standard installation with your current content.

Next Steps

In the next step, you can now [update to the current version of BlueSpice](#).

2. Update BlueSpice

Contents	
1 Notes	7
2 Requirements	7
3 Backup	7
3.1 Backup Database	7
3.2 Backup File System	8
4 Download BlueSpice	8
5 Unzip and Copy BlueSpice	8
6 Setup LocalSettings.php	9
7 Optional: Setup BlueSpiceExtensions	9
8 Update BlueSpice	9
9 Installation of the webservice to use the LatexRenderer (BlueSpice pro only)	11
10 Check installation	11

This document describes the update of BlueSpice from version 2.23.x-2.27.x to version 2.27.3.

Notes

- Please read this manual completely and follow the installation steps in the given order.
- For editing the configuration files in a text editor, it is necessary to save the files in UTF-8 code without BOM (Byte Order Mark).
- The placeholder `<installpath-bluespice>` is representative for the path to your BlueSpice installation, e.g. `C:\inetpub\wwwroot\bluespice` (Windows) oder `/var/www/bluespice` (Linux).
- The placeholder `<bluespice-url>` is representative for the URL of your BlueSpice installation, e.g. <http://localhost/bluespice>.

Requirements

For the update of BlueSpice to the BlueSpice version 2.27.3, an already installed and fully configured MediaWiki 1.27.x is required. This must be accessible at `<bluespice-url>` in your browser. If your current BlueSpice installation does not use MediaWiki 1.27.x, visit the [Update Manual for MediaWiki 1.23.x to 1.27.x](#) for more information.

Backup

It is absolutely necessary to create a backup copy of your current installation before updating the wiki.

Backup Database

To back up your database, use the on-board "mysqldump" program from MySQL / MariaDB: To do this, please open a console, change the directory `<installpath-bluespice>` and save the database using the following command:

```
mysqldump -u <username> -p --lock-tables <database> > database.sql
```

For <username> please use your administrative database user (usually "root"). For <database> use the database name of your MediaWiki/BlueSpice installation.



Under Windows, please make sure that the [environment variables](#) are set correctly to access the `mysqldump` command.

Backup File System

Save the complete directory <installpath-bluespice>, which now contains the database image, to a different location on your server.

For security reasons, immediately delete the file <installpath-bluespice>/database.sql.

Download BlueSpice

Download the current version of BlueSpice from [Sourceforge](#).

The package corresponding to this manual bears the name **BlueSpice-free-2.27.3.zip**.



If you purchased BlueSpice pro, this step is omitted. The corresponding package will be provided directly by the distributor.

Unzip and Copy BlueSpice

Unzip the downloaded BlueSpice archive. Please make sure that all relevant content is placed in **one** subfolder (e.g. bluespice-free). This subfolder contains the following directories and files:

- extensions
- settings.d
- skins
- BLUESPICE-INSTALL
- BLUESPICE-LICENSE
- BLUESPICE-RELEASE-HISTORY
- BLUESPICE-RELEASE-NOTES
- installcheck.php
- LocalSettings.BlueSpice.php
- *nsfr_img_auth.php (BlueSpice pro only)*

Name	^
extensions	
settings.d	
skins	
BLUESPICE-INSTALL	
BLUESPICE-LICENSE	
BLUESPICE-RELEASE-HISTORY	
BLUESPICE-RELEASE-NOTES	
installcheck.php	
LocalSettings.BlueSpice.php	
nsfr_img_auth.php	

Copy the unzipped subfolders into the <installpath-bluespice> and overwrite the existing files.

Delete the directory <installpath-bluespice>/extensions/BlueSpiceDistribution as long as it is still available from an old BlueSpice installation.

Setup LocalSettings.php

Open the file `<installpath-bluespice>/LocalSettings.php`. Look for the following lines:

```
# End of automatically generated settings.  
# Add more configuration options below.
```

Delete all following lines. If you have made additional configurations - apart from steps outlined in the old installation manual - under these lines, please keep these additional configurations in each case.

Insert the following lines instead at the end of LocalSettings.php:

```
require_once "$IP/LocalSettings.BlueSpice.php";
```

Close and save the file.



Starting with BlueSpice 2.27.1, all default settings as well as the individual modules of BlueSpice are stored. Thus BlueSpice is only integrated with this one line in MediaWiki. For technical information, visit the [documentation for advanced users](#).

Optional: Setup BlueSpiceExtensions

If you have already created the file `<installpath-bluespice>/extensions/BlueSpiceExtensions/BlueSpiceExtensions.local.php` in your current BlueSpice version, please switch to the directory `<installpath-bluespice>/extensions/BlueSpiceExtensions` and rename this mentioned file into `BlueSpiceExtensions.bak.php`.

In the next step, copy the file `BlueSpiceExtensions.default.php` to `BlueSpiceExtensions.local.php`

Please compare the files `BlueSpiceExtensions.local.php` and `BlueSpiceExtensions.bak.php` and make any uncomments/comments to the individual extensions made by you in the past. This is especially applicable to [Extended Search](#) and [PDF Export](#).

Update BlueSpice

Open your command line or terminal and change to the directory `<installpath-bluespice>`. run the following command there:

```
php maintenance/update.php (Linux)  
php maintenance\update.php (Windows)
```



Under Windows, make sure that the [environment variables](#) are set correctly to access the php command.



Under Linux, please note that you have to adjust the [file system permissions](#) after running the update.php.

When the script is finished with the "Done" message, proceed to the next step.

```
...event_agent field does not exist in echo_event table, skipping modify field patch.
Modifying event_variant field of table echo_event ...done.
Modifying event_extra field of table echo_event ...done.
Modifying event_agent_ip field of table echo_event ...done.
...have etp_id field in echo_target_page table.
...have notification_bundle_base field in echo_notification table.
...echo_event table does not contain event_timestamp field.
...have eeb_event_hash field in echo_email_batch table.
...have event_page_id field in echo_event table.
...index echo_event_type already set on echo_event table.
...index echo_user_timestamp already set on echo_notification table.
Creating titlekey table...ok.
Rebuilding titlekey table...
... 1 ok.
...hitcounter table does not exist, skipping modify field patch.
Creating hit_counter_extension table ...done.
Creating hit_counter table ...done.
...page table does not contain page_counter field.
Creating bs_editnotifyconnector table ...done.
Creating bs_namespacemanager_backup_page table ...done.
Creating bs_namespacemanager_backup_revision table ...done.
Creating bs_namespacemanager_backup_text table ...done.
Adding page_content_model field to table bs_namespacemanager_backup_page ...done.
Adding rev_shal field to table bs_namespacemanager_backup_revision ...done.
Adding rev_content_model field to table bs_namespacemanager_backup_revision ...done.
Creating bs_permission_templates table ...done.
Creating bs_dashboards_configs table ...done.
Creating bs_usagetraacker table ...done.
Creating bs_pagetemplate table ...done.
Creating bs_pageassignments table ...done.
...se_text field does not exist in bs_saferedit table, skipping modify field patch.
Creating bs_readers table ...done.
...have readers_ts field in bs_readers table.
...site_stats is populated...done.
Checking existence of old default messages...done.
Populating rev_len column
...doing rev_id from 1 to 200
Populating ar_len column
...archive table seems to be empty.
rev_len and ar_len population complete [0 revision rows, 0 archive rows].
Populating rev_shal column
...doing rev_id from 1 to 200
Populating ar_shal column
...archive table seems to be empty.
Populating ar_shal column legacy rows
rev_shal and ar_shal population complete [0 revision rows, 0 archive rows].
Populating img_shal field

Done 0 files in 0.0 seconds
Fixing protocol-relative entries in the externallinks table...
Done, 0 rows updated.
Populating fa_shal field from fa_storage_key

Done 0 files in 0.0 seconds
Updating * from namespace fields in links tables.
...doing page_id from 1 to 200
Purging caches...done.

Done in 1.6 s.
root@bluespice:/var/www/bluespice#
```

If the script should stop running, restart it.

Installation of the webservice to use the LatexRenderer (BlueSpice pro only)

Starting with BlueSpice 2.27.2 the extension "BlueSpiceLatexRenderer" replaces the extension "Math".

Please note: LatexRenderer is a part of BlueSpice pro edition only!

Please note that you have to install the [webservice](#) to use this extension.

When updating please also delete the folder `<installpath-bluespice>/extensions/Math`.

The usage of the tag

will not be changed, BlueSpiceLatexRenderer will use this tag as it is documented

Check installation

Open `<bluespice-url>` in your browser. BlueSpice should now be successfully updated to version 2.27.3 and a login with your access data should be possible.

3. Configuration of the webservice

- [Extended Search](#)
- [PDF-Export](#)
- [VisualDiff](#) (**BlueSpice pro only**)
- [LatexRenderer](#) (**BlueSpice pro only**)

3.1. Extended Search

Contents

1 Tips for this Document	13
2 Setting-up the Solr-Cores	13
3 Configuring Tomcat	14
3.1 Linux	14
3.2 Windows	14
4 Copying of the Solr Application	14
5 Restarting Tomcat	14
6 Activating the Extended Search in BlueSpice	15

This document describes the installation of the extended search for BlueSpice. Please take into account, that the [Apache Tomcat server](#) must be installed and configured completely.

Tips for this Document

- Please, read this manual completely and work through the single installation steps one after another.
- For editing the configuration files with a text editor, the files must be saved in UTF-8 coding without BOM (Byte Order Mark).
- The placeholder `<installpath-bluespice>` stands for the path to your BlueSpice installation, e.g C: \inetpub\wwwroot\bluespice (Windows) or /var/www/bluespice (Linux).
- The placeholder `<tomcat-webapps>` stands for the path to the Webapps directory of your Tomcat server, e.g. C:\Program Files\Apache Software Foundation\Tomcat 8.5\webapps (Windows) or /var/lib /tomcat8/webapps (Linux).

Setting-up the Solr-Cores

Create the following directory:

```
/opt/bluespice/data (Linux)  
C:\BlueSpice\bluespice_data (Windows)
```

Move the directory "solr" from `<installpath-bluespice>/extensions/BlueSpiceExtensions /ExtendedSearch/webservices` to the just created directory.

Switch to this directory and go to the subfolder `bluespice/conf/lang`. Choose `stopwords_<LANG>.txt` there, which matches your language and replace the file `stopwords.txt` in the folder `bluespice/conf` (one level higher) with this file.



With Linux, please transfer the folder `/opt/bluespice/data/solr` recursively to the user and group, under which the Tomcat server is running.

Configuring Tomcat

The Tomcat server needs to know the directory to the Solr core. The following describes how to configure this.

Linux

The distributions differ at this point regarding the configuration file. How this needs to be configured with the distribution you are using can be found in the documentation of the distributor. The following steps explain the configuration using Debian/Ubuntu and Tomcat 8:

Open the file `/etc/default/tomcat8` and add the following line at the end:

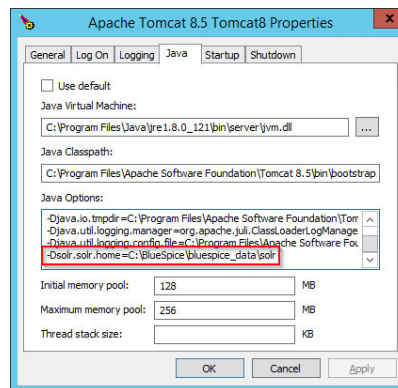
```
JAVA_OPTS="${JAVA_OPTS} -Dsolr.solr.home=/opt/bluespice/data/solr"
```

Save the changes and exit the file.

Windows

Open the [configuration interface of Tomcat](#) and switch to the tab "Java". At the field "Java Options", add this as the last point in the line:

```
-Dsolr.solr.home=C:\BlueSpice\bluespice_data\solr
```



Save this settings by clicking at "Apply".

Copying of the Solr Application

Move the file "solr.war" from the directory `<installpath-bluespice>/extensions/BlueSpiceExtensions/ExtendedSearch/webservices` to `<tomcat-webapps>`

Restarting Tomcat

Restart the Tomcat Webserver like described [here](#).

Activating the Extended Search in BlueSpice

Go to the directory `<installpath-bluespice>/extensions/BlueSpiceExtensions`. If the file **BlueSpiceExtensions.local.php** does not exist already, please copy the file **BlueSpiceExtensions.default.php** and paste it in the folder. Rename it to **BlueSpiceExtensions.local.php**. Open this file in a text editor.

Scroll to the end of the file. There you can find the following line:

```
#require_once( __DIR__."/ExtendedSearch/ExtendedSearch.setup.php" );
```

Delete the first character (**#**), save and exit the file.

Open a command line and change to the directory `<installpath-bluespice>`. Run the following command there:

```
php maintenance/update.php (Linux)  
php maintenance\update.php (Windows)
```



With Windows, please take care that the [environment variables](#) are set correctly to access the command "php".



With Linux, please take care that after running the `update.php`, the [file system permissions](#) must be set again.

As soon as the script finished its work with the message "Done", run a further maintenance script to create the search index:

```
php extensions/BlueSpiceExtensions/ExtendedSearch/maintenance/searchUpdate.php (Linux)  
php extensions\BlueSpiceExtensions\ExtendedSearch\maintenance\searchUpdate.php (Windows)
```

Running this script may take some time. This depends on the amount of content, which has been created in the wiki. When the script was completely executed, the extended search is installed successfully and is ready to use.

3.2. PDF-Export

Contents

1 Tips for this Document	16
2 Copying the BShtml2PDF Application	16
3 Restart Tomcat	16
4 Activating the PDF Export in BlueSpice	16
5 Troubleshooting	18

This document describes the installation of BlueSpice - PDF export. Please make sure that the [Apache Tomcat server](#) is completely installed and configured at the BlueSpice server.

Tips for this Document

- Please, read this manual completely and work through the single installation steps one after another.
- For editing the configuration files with a text editor, the files must be saved in UTF-8 coding without BOM (Byte Order Mark).
- The placeholder <installpath-bluespice> stands for the path to your BlueSpice installation, e.g C:\inetpub\wwwroot\bluespice (Windows) or /var/www/bluespice (Linux).
- The placeholder <tomcat-webapps> stands for the path to the Webapps directory of your Tomcat server, e.g. C:\Program Files\Apache Software Foundation\Tomcat 8.5\webapps (Windows) or /var/lib/tomcat8/webapps (Linux).

Copying the BShtml2PDF Application

Move the file "BShtml2PDF.war" from the directory <installpath-bluespice>/extensions/BlueSpiceExtensions/UEModulePDF/webservices to <tomcat-webapps>

Restart Tomcat

Restart the Tomcat Webserver like described [here](#).

Activating the PDF Export in BlueSpice

Go to the directory <installpath-bluespice>/extensions/BlueSpiceExtensions. If the file **BlueSpiceExtensions.local.php** does not exist already, please copy the file **BlueSpiceExtensions.default.php** and place it in the same folder under the name **BlueSpiceExtensions.local.php**. Open this file in a text editor.

Scroll to the end of the file. You will find the following lines there:

```
#require_once( __DIR__."/UniversalExport/UniversalExport.setup.php" );  
#require_once( __DIR__."/UEModulePDF/UEModulePDF.setup.php" );
```


Remove the first character (`#`), save the file and exit it.

Open a command line and change to the `<installpath-bluespice>` folder. Execute the following command:

```
php maintenance/update.php (Linux)  
php maintenance\update.php (Windows)
```



In Windows, make sure that the [environment variables](#) are set correctly to access the `php` command.



Note that you must update the [file system permissions](#) after running `update.php`.

When the script is finished with the "Done" message, the web service is successfully installed.

```
...event_agent field does not exist in echo_event table, skipping modify field patch.
Modifying event_variant field of table echo_event ...done.
Modifying event_extra field of table echo_event ...done.
Modifying event_agent_ip field of table echo_event ...done.
...have etp_id field in echo_target_page table.
...have notification_bundle_base field in echo_notification table.
...echo_event table does not contain event_timestamp field.
...have eeb_event_hash field in echo_email_batch table.
...have event_page_id field in echo_event table.
...index echo_event_type already set on echo_event table.
...index echo_user_timestamp already set on echo_notification table.
Creating titlekey table...ok.
Rebuilding titlekey table...
... 1 ok.
...hitcounter table does not exist, skipping modify field patch.
Creating hit_counter_extension table ...done.
Creating hit_counter table ...done.
...page table does not contain page_counter field.
Creating bs_editnotifyconnector table ...done.
Creating bs_namespacemanager_backup_page table ...done.
Creating bs_namespacemanager_backup_revision table ...done.
Creating bs_namespacemanager_backup_text table ...done.
Adding page_content_model field to table bs_namespacemanager_backup_page ...done.
Adding rev_shal field to table bs_namespacemanager_backup_revision ...done.
Adding rev_content_model field to table bs_namespacemanager_backup_revision ...done.
Creating bs_permission_templates table ...done.
Creating bs_dashboards_configs table ...done.
Creating bs_usagetracker table ...done.
Creating bs_pagetemplate table ...done.
Creating bs_pageassignments table ...done.
...se_text field does not exist in bs_saferedit table, skipping modify field patch.
Creating bs_readers table ...done.
...have readers_ts field in bs_readers table.
...site_stats is populated...done.
Checking existence of old default messages...done.
Populating rev_len column
...doing rev_id from 1 to 200
Populating ar_len column
...archive table seems to be empty.
rev_len and ar_len population complete [0 revision rows, 0 archive rows].
Populating rev_shal column
...doing rev_id from 1 to 200
Populating ar_shal column
...archive table seems to be empty.
Populating ar_shal column legacy rows
rev_shal and ar_shal population complete [0 revision rows, 0 archive rows].
Populating img_shal field

Done 0 files in 0.0 seconds
Fixing protocol-relative entries in the externallinks table...
Done, 0 rows updated.
Populating fa_shal field from fa_storage_key

Done 0 files in 0.0 seconds
Updating * from namespace fields in links tables.
...doing page_id from 1 to 200
Purging caches...done.

Done in 1.6 s.
root@bluespice:/var/www/bluespice#
```

Troubleshooting

If there is a problem with PDF export in BlueSpice, first check the [file system permissions](#).

3.3. VisualDiff

Contents

1 Tips for this Document	19
2 Copy of BShtmlDiff	19
3 Restart Tomcat	19
4 Troubleshooting	19

This document describes the installation of VisualDiff from BlueSpice. **VisualDiff is a exclusive component of BlueSpice pro!** Please note that the [Apache Tomcat server](#) must be installed and configured on the BlueSpice server.

Tips for this Document

- Please, read this manual completely and work through the single installation steps one after another.
- For editing the configuration files with a text editor, the files must be saved in UTF-8 coding without BOM (Byte Order Mark).
- The placeholder <installpath-bluespice> stands for the path to your BlueSpice installation, e.g C:\inetpub\wwwroot\bluespice (Windows) or /var/www/bluespice (Linux).
- The placeholder <tomcat-webapps> stands for the path to the Webapps directory of your Tomcat server, e.g. C:\Program Files\Apache Software Foundation\Tomcat 8.5\webapps (Windows) or /var/lib/tomcat8/webapps (Linux).

Copy of BShtmlDiff

Move the file "BShtmlDiff.war" from the directory <installpath-bluespice>/extensions/BlueSpiceVisualDiff/VisualDiff/webservices to <tomcat-webapps>

Restart Tomcat

Restart the Tomcat Webserver like described [here](#).

This completes the installation of VisualDiff.

Troubleshooting

If there is a problem with VisualDiff in BlueSpice, first check the [file system permissions](#).

3.4. LatexRenderer

Contents

1 Tip for this Document	20
2 Installation of the LatexRenderer application	20
3 Restart Tomcat	20
4 Troubleshooting	20

This document describes the installation of LatexRenderer from BlueSpice. **LatexRenderer is a exclusive component of BlueSpice pro!** Please note that the [Apache Tomcat server](#) must be installed and configured on the BlueSpice server.

Tip for this Document

- Please, read this manual completely and work through the single installation steps one after another.
- For editing the configuration files with a text editor, the files must be saved in UTF-8 coding without BOM (Byte Order Mark).
- The placeholder <installpath-bluespice> stands for the path to your BlueSpice installation, e.g C:\inetpub\wwwroot\bluespice (Windows) or /var/www/bluespice (Linux).
- The placeholder <tomcat-webapps> stands for the path to the Webapps directory of your Tomcat server, e.g. C:\Program Files\Apache Software Foundation\Tomcat 8.5\webapps (Windows) or /var/lib/tomcat8/webapps (Linux).

Installation of the LatexRenderer application

Move the file "BSLaTeX2PNG.war" from the directory <installpath-bluespice>/extensions/BlueSpiceLatexRenderer/LatexRenderer/webservices to <tomcat-webapps>

Restart Tomcat

Restart the Tomcat Webserver like described [here](#).

This already completes the installation of LatexRenderer.

Troubleshooting

If there is a problem with LatexRenderer in BlueSpice, first check the [file system permissions](#).

4. Additional settings and optimization

- [Caching](#)
- [Cronjobs](#)
- [Time zone](#)

4.1. Caching

Contents

1 Tips for the Document	22
2 Linux vs. Windows	22
3 Indicate Cache-Directory	22
4 Name Resolution of the Database	23
5 Activate Memcached	23
6 Increase PHP Memory Limit	23
7 Activate Bytecode Cache in PHP	23
8 Deactivate JobQueue	24

This document describes different caching options to enhance the performance of your BlueSpice installation.

Tips for the Document

- Please, read this manual completely and work through the single installation steps one after another.
- For editing the configuration files with a text editor, the files must be saved in UTF-8 coding without BOM (Byte Order Mark).
- The placeholder `<installpath-bluespice>` stands for the path to your BlueSpice installation, e.g `C:\inetpub\wwwroot\bluespice` (Windows) or `/var/www/bluespice` (Linux).

Linux vs. Windows

Please note that with equal hardware conditions, BlueSpice empirically runs more performantly on Linux than on Windows servers.

Indicate Cache-Directory

This forces BlueSpice to use the filesystem instead of the database for some internal caches. To do this, create the file `<installpath-bluespice>/settings.d/001-Directories.php` and add the following content:

```
<?php
$wgCacheDirectory = "$IP/cache";
```

Save and close the file.



Note that the directory "cache" in `<installpath-bluespice>` must be writable by the web server. For more information, read the [file system permissions](#).

Name Resolution of the Database

If this hasn't already been done while [setting up MediaWiki](#), please make sure that the database server will be addressed via IP if it runs on the same server than BlueSpice. Especially Windows has problems with the resolution of "localhost".

To do this, open `<installpath-bluespice>/LocalSettings.php` and locate the variable `$wgDBserver`. The line should ideally be:

```
$wgDBserver = "127.0.0.1";
```

Activate Memcached

Create the file `<installpath-bluespice>/settings.d/001-Memcached.php` and add the following content:

```
<?php
$wgMainCacheType = CACHE_MEMCACHED;
$wgSessionCacheType = CACHE_DB;
$wgMemCachedServers = [ "127.0.0.1:11211" ];
```

Save and close the file.



The prerequisite is an installed and configured memcached server on the BlueSpice server. Read the [memcached](#) article for more information.

Increase PHP Memory Limit

A higher memory limit of PHP results in a faster execution. ¶ This can be changed in `php.ini`. Locate and adjust the following option:

```
memory_limit = 512M (means 512 MB - varies from the available memory)
```

After saving and closing `php.ini`, the web server must be restarted.

Activate Bytecode Cache in PHP

Since PHP 5.5 the bytecode cache "opcache" is included.

This needs to be activated in the `php.ini` first. Check if the module is integrated there. This is done via the line:

```
zend_extension=opcache.dll (Windows)
zend_extension=opcache.so (Linux)
```



Please also note the specification of the distributor for activating PHP modules under Linux.

Please, do the following configuration of the opcache in php.ini. Normally, all options should already exist, but are commented out by semicolon (;) at the beginning of the line. Locate the respective option in php.ini, remove the semicolon at the beginning of the line and adjust the settings as follows:

```
opcache.enable=1
opcache.memory_consumption=512 (means 512 MB - varies from the available memory)
opcache.max_accelerated_files=5000
opcache.validate_timestamps=1
opcache.revalidate_freq=2
```

After saving and closing php.ini, the web server must be restarted.

Deactivate JobQueue

For this, read the [paragraph "runJobs.php"](#) in the "Cronjobs" article.

4.2. Cronjobs

Contents

1 Tips for this Document	25
2 runJobs.php	25
3 processBsEmailBatch.php	25
4 runNotifications.php (only BlueSpice pro)	26

This document describes cronjobs and related configurations, which should be set for your BlueSpice (depending on the used version).

Tips for this Document

- Please, read this manual completely and work through the single installation steps one after another.
- For editing the configuration files with a text editor, the files must be saved in UTF-8 coding without BOM (Byte Order Mark).
- The placeholder `<installpath-bluespice>` stands for the path to your BlueSpice installation, e.g. C:\inetpub\wwwroot\bluespice (Windows) or /var/www/bluespice (Linux).

runJobs.php

Time-consuming processes will be moved to a processing queue in the background of BlueSpice. With every page impression, a part of these will be processed. For the case that there are lots of processes in the queue and there are relatively little page impressions, the tasks will not be processed promptly.

For this reason, the queue should be processed regularly by cronjob.

Now create a cronjob (Windows: "Scheduled task") depending on your operating system. The command to execute is:

```
php <installpath-bluespice>/maintenance/runJobs.php (Linux)
php.exe <installpath-bluespice>\maintenance\runJobs.php (Windows)
```



It is recommended to specify the complete path to php.exe under Windows. For more information, see the [environment variables](#) document.

Execute the cronjob every **15 minutes**.

processBsEmailBatch.php

For reports via email sent from MediaWiki, please create a cronjob and run it daily. The command for this is:

```
php <installpath-bluespice>/extensions/BlueSpiceEchoConnector/maintenance/processBsEmailBatch.php
php.exe <installpath-bluespice>\extensions\BlueSpiceEchoConnector\maintenance\processBsEmailBatch.php
```



It is recommended to specify the complete path to php.exe under Windows. For more information, see the [environment variables](#) document.

runNotifications.php (only BlueSpice pro)

The BlueSpiceReminder notifies the users by email about upcoming tasks in BlueSpice. For this, a cronjob needs to be executed once a day. This is the command:

```
php <installpath-bluespice>/extensions/BlueSpiceReminder/Reminder/maintenance/runNotifications.php  
php <installpath-bluespice>\extensions\BlueSpiceReminder\Reminder\maintenance\runNotifications.php
```



It is recommended to specify the complete path to php.exe under Windows. For more information, see the [environment variables](#) document.

4.3. Time Zone

Contents

1 Tips for this Document	27
2 Changing the Time Zone	27

Even if every user can change his time zone himself in the user settings, BlueSpice sets the default time zone "Europe/Berlin" when the user first logs in. This document describes how to change this if necessary.

Tips for this Document

- Please, read this manual completely and work through the single installation steps one after another.
- For editing the configuration files with a text editor, the files must be saved in UTF-8 coding without BOM (Byte Order Mark).
- The placeholder <installpath-bluespice> stands for the path to your BlueSpice installation, e.g C:\inetpub\wwwroot\bluespice (Windows) or /var/www/bluespice (Linux).

Changing the Time Zone

Open the file <installpath-bluespice>/settings.d/001-DefaultSettings.php. In delivery stat, you can find these two lines there:

```
$wgLocaltimezone = 'Europe/Berlin';  
$wgDefaultUserOptions['timecorrection'] = 'ZoneInfo|' . (date("I") ? 120 : 60) . '|Europe/
```

Replace "Europe / Berlin" with your time zone. An overview of all possible time zones can be found in the [official PHP documentation](#).

Save and close the file.

5. Further system configuration

- [Environment variables \(Windows\)](#)
- [Apache Tomcat](#)
- [Memcached](#)

5.1. Apache Tomcat

Contents	
1 Installation	29
1.1 Linux	29
1.2 Windows	29
1.2.1 Java	29
1.2.2 Tomcat	30
1.3 Installation Check	30
2 Configuration	30
2.1 context.xml	30
2.2 server.xml	31
2.3 Restart Tomcat	31
3 Special features under Windows	31
3.1 Configure Tomcat	31
3.2 Restart Tomcat	31
3.3 Setup Autostart	32
3.4 Particular Caution: Java Update	32

This document describes the configuration of the Apache Tomcat server, which is needed for the [Webservices](#) of BlueSpice.

Installation

Linux

Install the latest version of the Apache Tomcat server in the package manager of your distribution. The package manager dissolves all dependencies and installs the required packages.

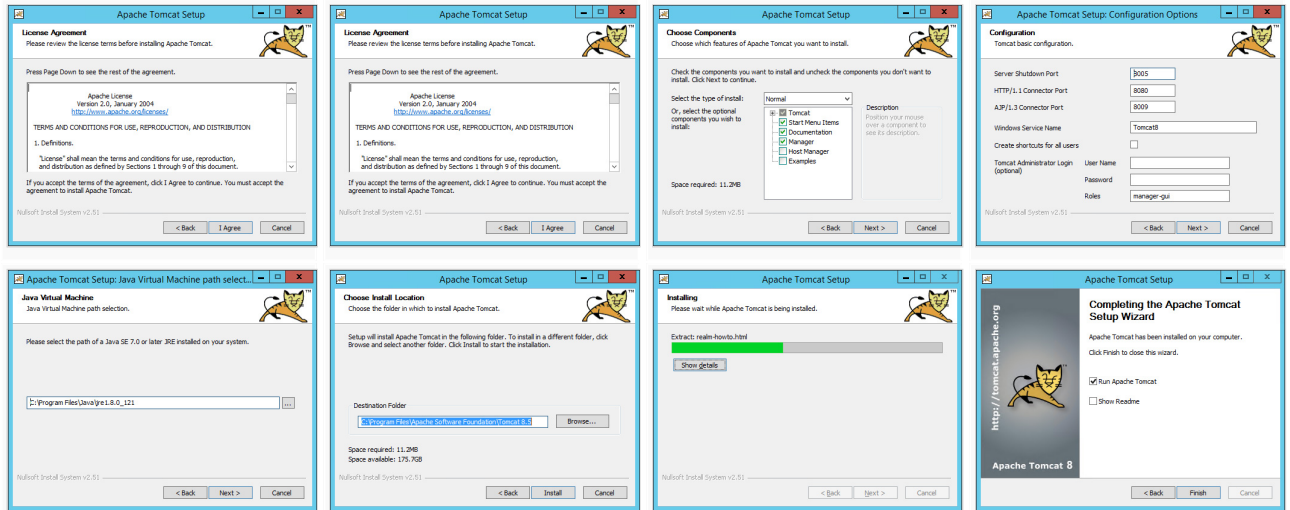
Windows

Java

Apache Tomcat requires the Java Runtime Environment. If these is not already installed at your system, download (www.java.com) and install it. We recommend the 64 bit version for latest systems.

Tomcat

Download the "32-bit/64-bit Windows Service Installer" from the [Tomcat project website](#). No modifications are necessary during the installation process. Confirm the single steps with "Next".



Installation Check

If the Apache Tomcat server has been installed and started correctly can be checked by calling up `http://<host name-or-ip-of-the-server>:8080`. With a correct installation, the default page of the server will be displayed.

Configuration

Now, two configuration files of the Tomcat server need to be adjusted:

- context.xml
- server.xml

Those can - per default - be found at:

- with Windows: `C:\Program Files\Apache Software Foundation\Tomcat 8.5\conf`
- with Linux: `/etc/tomcatX` (the "X" stands for the particular Tomcat version)

context.xml

Replace the line

```
<context>
```

with

```
<Context mapperContextRootRedirectEnabled="true">
```

server.xml

Please make sure that the complete block

```
<Connector port="8080" protocol="HTTP/1.1"
... />
```

is as follows:

```
<Connector port="8080" protocol="HTTP/1.1"
connectionTimeout="20000"
URIEncoding="UTF-8"
redirectPort="8443"
address="127.0.0.1" />
```

Restart Tomcat

Restart the Tomcat server:

- Linux: `service tomcatX restart` (the "X" stands for the particular Tomcat version)
- Windows: See below: [Restart Tomcat](#)

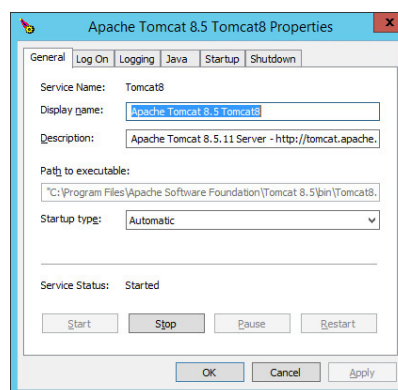
Special features under Windows

Configure Tomcat

All of the following settings need to be done in the configuration interface of Tomcat. These can be found in the start menu under "Configure Tomcat".

Restart Tomcat

The restart can be performed in the first tab of the configuration interface. Stop and then start the service there.



Setup Autostart

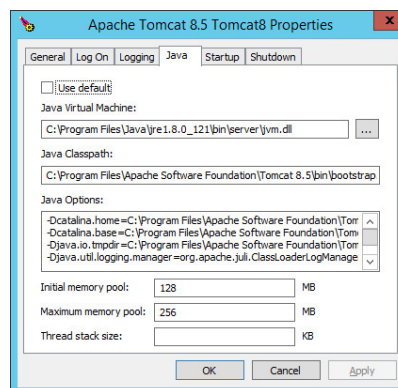
Tomcat will not automatically be started with Windows. This needs to be configured in the first tab, where you also start the service. Switch to "Automatic" under "Startup type" and save this changes with a click on "Apply".

Particular Caution: Java Update

Tomcat requires Java. The path for this is firmly defined in Tomcat. Java, however, changes the installation path with every update. Those needs to be configured in Tomcat after every update to guarantee the functionality of Tomcat.

To do this, switch to the tab "Java" and change the path to jvm.dll under "Java Virtual Machine" - normally this is

`C:\Program Files\Java\>\bin\server\jvm.dll.`



5.2. Memcached

Contents

1 Tips for this Document	33
2 Linux	33
2.1 Installation	33
2.2 Configuration	33
2.3 Check the Server	34
3 Windows	34
3.1 Requirements	34
3.2 Download	34
3.3 Installation	34
3.4 Starting the MemCached Manager	34
3.5 Configuration	35

This document describes how to set up the memcached server, with which you can achieve some speed optimization. For the configuration of BlueSpice, also read the paragraph "Activate Memcached" in the "Caching" article.

Tips for this Document

- Please, read this manual completely and work through the single installation steps one after another.
- For editing the configuration files with a text editor, the files must be saved in UTF-8 coding without BOM (Byte Order Mark).

Linux

Installation

Install the memcached server in the package manager of your distribution.

Configuration

Open the file that contains the memcached configuration (for example, `/etc/memcached.conf` under Debian / Ubuntu). Locate the `-m` argument and increase the amount of memory available depending on the capabilities of your server:

```
-m 1024
```

Save and close the file, and restart memcached.

Check the Server

Verify that the memcached server is running:

```
netstat -tulpn | grep 11211
```

If you receive an output that is similar to this, memcached has started successfully:

```
root@bluespice:/var/www/bluespice# netstat -tulpn | grep 11211
tcp    0 0 127.0.0.1:11211  0.0.0.0:*        LISTEN      15163/memcached
udp    0 0 127.0.0.1:11211  0.0.0.0:*        15163/memcached
root@bluespice:/var/www/bluespice#
```

Windows

The use of Nick Pirocanac's MemCachedD Manager is highly recommended. This makes the configuration very simple.

Requirements

An installed .NET Framework version 3.5 is required for the MemCachedD Manager.

Download

Download the MemCachedD Manager from software.informer.com.

Installation

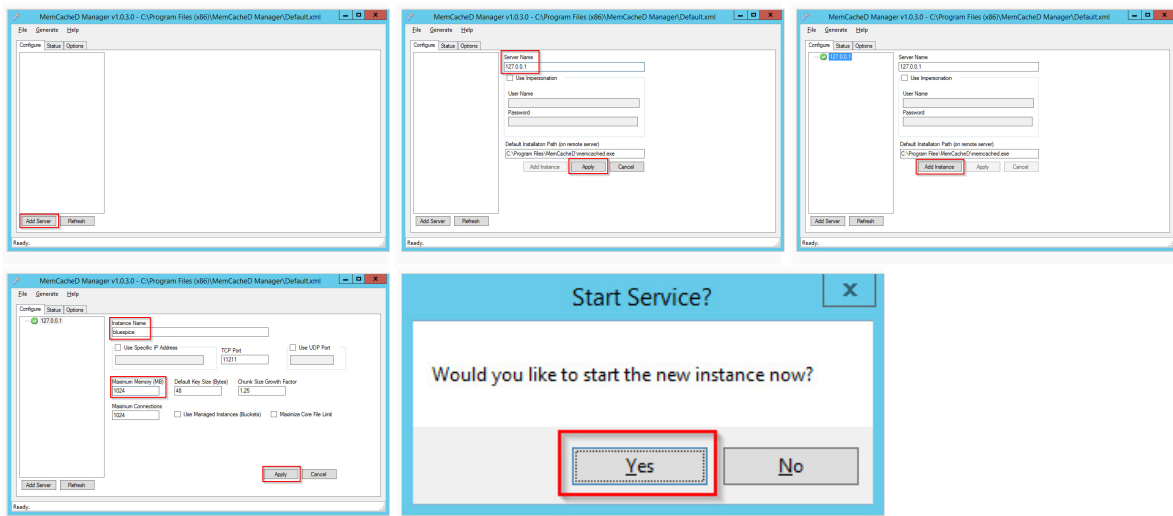
During the installation you have hardly any setting possibilities, so you can "click" through the installation process without any changes.

Starting the MemCachedD Manager

Always start the MemCachedD Manager from the start menu **as administrator** (right click -> Run as administrator)!

Configuration

1. In MemCached Manager, click "Add Server"
2. Enter the local IP "127.0.0.1" under "Server Name" and click on "Apply"
3. Click "Add Instance"
4. Enter any desired name under "Instance Name"
5. Under Maximum Memory, increase the available memory depending on the capabilities of your server
6. Click "Apply"
7. Start the new created instance by clicking on "Yes"



The Memcached Server is now installed and configured.

5.3. Improve speed performance

BlueSpice is optimized for fast read accesses. If your BlueSpice is running slowly, it can have different reasons. Often the search engine is not set up or the corresponding Tomcat server is not available. Also, an incorrect configuration (e.g., caches) may be the cause. Or the performance of your server is too low.

In this Howto you will find the most important solutions for increasing the speed of your BlueSpice instance.

Contents

1 Apache Tomcat Server not available	36
2 Measures to increase performance	36
2.1 Specify cache directory	36
2.2 Resize the name resolution of the database server	37
2.3 Enable memcached	37
2.4 Enable Bytecode Cache in PHP	37
2.5 Increase PHP Memory Limit	37
2.6 Set up JobQueue	38
2.7 Renew the L10N cache	38

Apache Tomcat Server not available

BlueSpice uses the search engine Apache Lucene / Solr, which supports important services of the wiki. Should saving a page take a long time, this is an indication that you have a problem with the search engine. Or you can simply enter a search query: If the input and the search page does not look as described [here](#), the [search engine](#) is not installed correctly.

- Please check the [Installation manual](#) to see if you have completed the installation.
- Restart the Apache Tomcat Server.

Measures to increase performance

Specify cache directory

When you specify a cache directory, the Wiki uses the filesystem for some internal caches instead of the database

```
## Set $wgCacheDirectory to a writable directory on the web server
## to make your wiki go slightly faster. The directory should not
## be publically accessible from the web.
$wgCacheDirectory = "$IP/cache";
```

Please make sure that the folder named here can be described by your web server. See also the notes in the [Installation manual](#).

Learn more: [https://www.mediawiki.org/wiki/Manual:\\$wgCacheDirectory](https://www.mediawiki.org/wiki/Manual:$wgCacheDirectory)

Resize the name resolution of the database server

Especially under Windows, the name resolution of "localhost" can lead to delays. Use the IP address instead of the DNS name in the database. To do this, change the server configuration accordingly in LocalSettings.php:

```
$wgDBserver = "127.0.0.1"; #change IP value to your DB server IP
```

Enable memcached

Use Memcached as the central cache type. Note that Memcached must be installed and active on the server!

To do this in LocalSettings.php insert this configuration at the end:

```
$wgMainCacheType = CACHE_MEMCACHED;  
$wgMemCachedServers = array( "127.0.0.1:11233" );
```

Enable Bytecode Cache in PHP

Since PHP 5.5, the bytecode cache opcache is delivered with. This must however be activated in the php.ini.

```
opcache.enable=1
```

Additional settings:

```
opcache.memory_consumption=512  
opcache.max_accelerated_files=10000  
opcache.validate_timestamps=1  
opcache.revalidate_freq=2
```

After changing the php.ini, the web server must be restarted.

Learn more: <http://php.net/manual/de/opcache.configuration.php> und <http://www.hostingadvice.com/how-to/enable-php-5-5-opcache-ubuntu-14-04/>

Increase PHP Memory Limit

A higher memory limit of PHP results in a faster execution. This must be specified in php.ini:

```
memory_limit = 256M
```

After changing the php.ini, the web server must be restarted.

Set up JobQueue

Some tasks from MediaWiki can be delayed. Typically, they are processed by calling pages on the wiki. This can lead to delays. To prevent this, the JobQueue must be set up. Create a cronjob or task that runs this script every 10 minutes:

```
php maintenance/runJobs.php --maxjobs 100
```

Renew the L10N cache

Only in the case of absolute emergency, you can manually update the local cache, otherwise it will be rewritten every page call. To do this in LocalSettings.php insert this configuration at the end:

```
$wgLocalisationCacheConf['manualRecache'] = true;
```

Then execute the following command:

```
php /maintenance/rebuildLocalisationCache.php --force --lang="de,de-formal,en"
```

This command should also be set up as an hourly cronjob.

Learn more: [https://www.mediawiki.org/wiki/Manual:\\$wgLocalisationCacheConf](https://www.mediawiki.org/wiki/Manual:$wgLocalisationCacheConf)

5.4. Environment Variables

Contents

1 Tips for this Document	39
2 Figure out Paths	39
3 Enter Environmental Variables	39

For using console commands for PHP and MySQL in a comfortable way, some settings in the environment variables should be done. This document describes how to do this.

Tips for this Document

- Please, read this manual completely and work through the single installation steps one after another.

Figure out Paths

Please try to figure out in which paths of your Windows installation the following files are located:

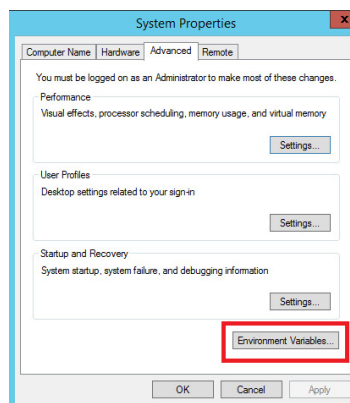
- php.exe
- mysql.exe

This document uses these paths as **an example** for the description:

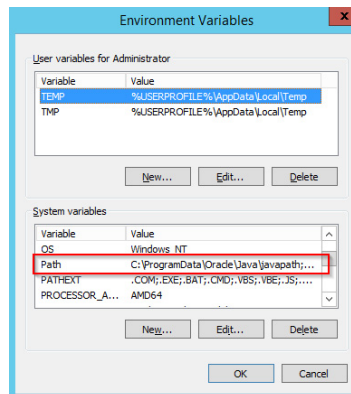
- C:\Program Files (x86)\PHP\php-5.6.30\php.exe
- C:\Program Files\MariaDB 10.1\bin\mysql.exe

Enter Environmental Variables

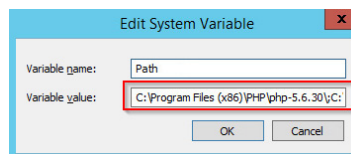
1. Press the key combination "Windows + R" to start the input request
2. Start the program "SystemPropertiesAdvanced.exe"
3. Click at "Environment Variables"



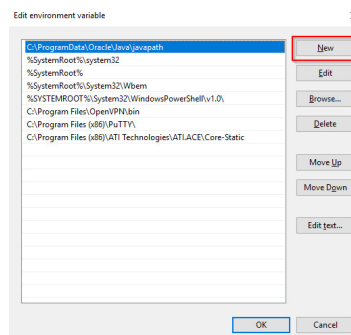
4. Open the variable "Path" at "System variables" with a double click



5. With Windows 2012: In the line "Value of Variables", add the paths to php.exe and mysql.exe, separated by semicolon, directly at the beginning of the line. Regarding the path example, this would be **"C:\Program Files (x86)\PHP\php-5.6.30;C:\Program Files\MariaDB 10.1\bin\"**;



6. Windows 2016 and above: Add two new entries with their respective pathnames



7. Close all windows by clicking on "OK"
8. Restart the command line

Now you should be able to call up the commands "php" and "mysql" without problems in the command line.

6. Security Settings

- [File System Permissions](#)
- [Deactivating installcheck file](#)
- [Save Directories](#)

6.1. File System Permissions

Contents

1 Tips for this Document	42
2 Affected Folders	42
3 Assignment of Permissions with Windows	42
4 Assignment of Permissions with Linux	43

For trouble-free usage of your BlueSpice installation, the web server requires write permissions to several folders of the file system. However, it is recommended to keep the rights for all other files and folders to a minimum. This document shows you the relevant folders and the correct permissions setting.

Tips for this Document

- Please, read this manual completely and work through the single installation steps one after another.
- For editing the configuration files with a text editor, the files must be saved in UTF-8 coding without BOM (Byte Order Mark).
- The placeholder `<installpath-bluespice>` stands for the path to your BlueSpice installation, e.g `C:\inetpub\wwwroot\bluespice` (Windows) or `/var/www/bluespice` (Linux).

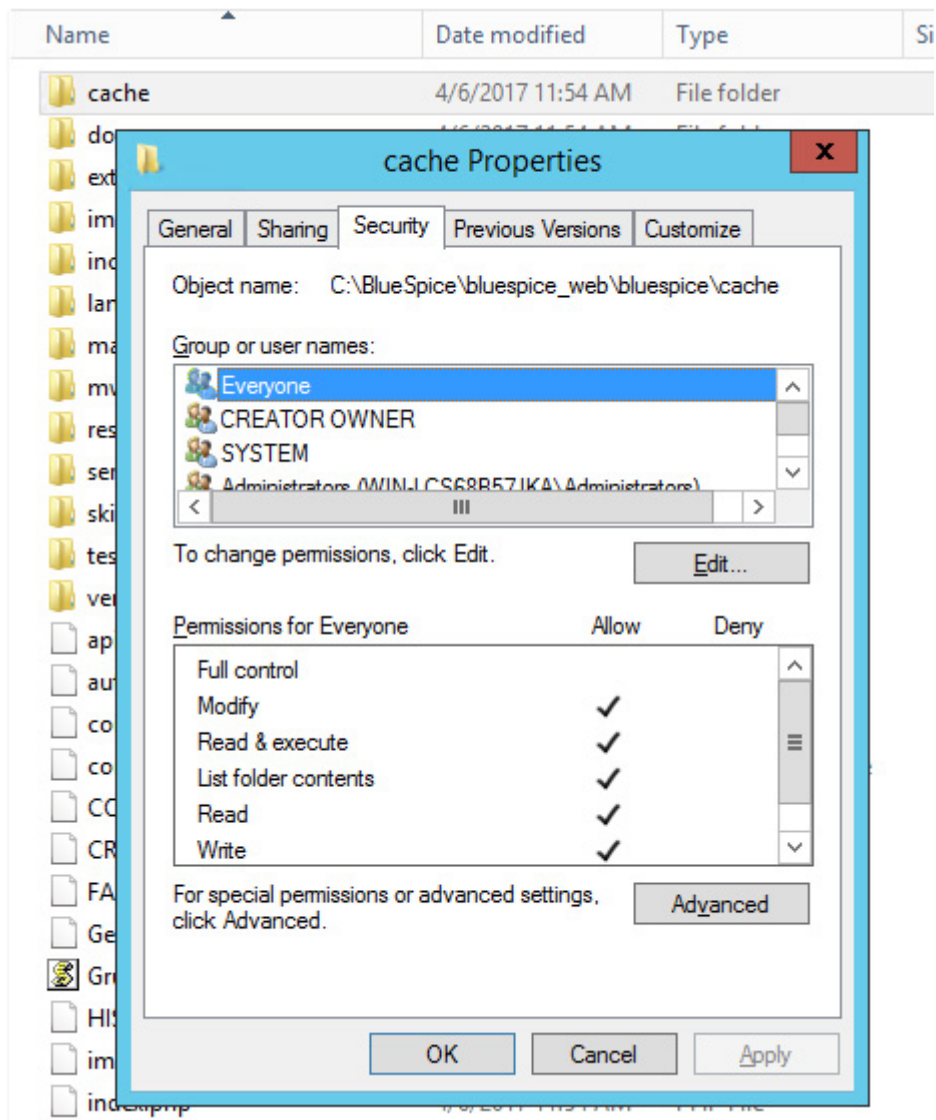
Affected Folders

The folders, which require write permissions, are:

- `<installpath-bluespice>/cache`
- `<installpath-bluespice>/images`
- `<installpath-bluespice>/extensions/BlueSpiceFoundation/config`
- `<installpath-bluespice>/extensions/BlueSpiceFoundation/data`
- `<installpath-bluespice>/extensions/Widgets/compiled_templates` (**only BlueSpice pro**)

Assignment of Permissions with Windows

Assign "change" rights for this folder for the local user "Everyone".



Assignment of Permissions with Linux

Here you can assign rights much more strictly, which is also recommended. Transfer the directory <installpath-bluespice> recursively to the user root (CHMOD for Files 644, CHMOD for Directories 755) and after this, transfer the mentioned directory recursively to the user and the group, under which the Apache Web Server runs (Debian/Ubuntu e.g. "www-data").

In the following, we provide a bash script, which works through this tasks for you with only one command.

To do so, create the file /usr/local/bin/setWikiPerm and copy the following code into this file:

```
#!/bin/bash
WWW_USER="www-data"
WWW_GROUP="www-data"

WWW_HOME=`eval echo ~$WWW_USER`
WWW_CFG=$WWW_HOME/.config

if [ $# -eq 0 ]; then
```

```

        echo "You must enter the path of your MediaWiki installation."
        exit
    elif [ ! -d $1 ]; then
        echo "$1 does not exist or is no path."
        exit
    fi

    PATH=`echo "$1" | sed -e 's#/###'`

    /usr/bin/find $PATH -type d -exec /bin/chmod 755 {} \;
    /usr/bin/find $PATH -type f -exec /bin/chmod 644 {} \;

    /bin/chown -R root:root $PATH

    pathes=(
        "$PATH/cache" \
        "$PATH/images" \
        "$PATH/_sf_instances" \
        "$PATH/extensions/BlueSpiceFoundation/data" \
        "$PATH/extensions/BlueSpiceFoundation/config" \
        "$PATH/extensions/Widgets/compiled_templates" \
    )

    for i in "${pathes[@]}; do
        if [ -d $i ]; then
            /bin/chown -R $WWW_USER:$WWW_GROUP $i
        fi
    done

    if [ ! -d $WWW_CFG ]; then
        /bin/mkdir $WWW_CFG
    fi

    /bin/chown -R $WWW_USER:$WWW_GROUP $WWW_CFG

    /bin/chmod 755 $PATH/extensions/SyntaxHighlight_GeSHi/pygments/create_pygmentize_bundle
    /bin/chmod 755 $PATH/extensions/SyntaxHighlight_GeSHi/pygments/pygmentize

    /usr/bin/find $PATH/extensions/Scribunto/engines/LuaStandalone/binaries/*_linux_* -name

```

If needed, replace the content of the variables

```

WWW_USER="www-data"
WWW_GROUP="www-data"

```

with the appropriate user and group of your distribution.

After this, assign CHMOD 755 to this file. Now you can run the script and let it do the complete permission setting automatically with the following command:

```

setWikiPerm <installpath-bluespice>

```



Note that when the update.php is executed on the console, the rights can be partially discarded. For this reason, set the rights to "update.php" again.

6.2. Deactivating installcheck file

Contents

1 Tips for this Document	45
2 Deactivating installcheck.php	45

As soon as the setup of BlueSpice is completed, you should prevent the execution of the `installcheck.php` while using the wiki productively.

A short instruction can be found in this document.

Tips for this Document

- Please, read this manual completely and work through the single installation steps one after another.
- For editing the configuration files with a text editor, the files must be saved in UTF-8 coding without BOM (Byte Order Mark).
- The placeholder `<installpath-bluespice>` stands for the path to your BlueSpice installation, e.g C: `\inetpub\wwwroot\bluespice` (Windows) or `/var/www/bluespice` (Linux).

Deactivating installcheck.php

Switch to the directory `<installpath-bluespice>` and open the `installcheck.php` file in a text editor. Insert a new line after the first line and insert

```
die( 'Deactivated.' );
```

Save and exit the file. The `installcheck.php` is no longer accessible now.

If you need to restore this file at a later time, it is sufficient to temporarily disable inserted line by placing the `#` character at the beginning of the line.

6.3. Save Directories

Contents

1 Tips for this Document	46
2 Explanation for Saving Directories	46

Tips for this Document

- Please, read this manual completely and work through the single installation steps one after another.
- For editing the configuration files with a text editor, the files must be saved in UTF-8 coding without BOM (Byte Order Mark).
- The placeholder `<installpath-bluespice>` stands for the path to your BlueSpice installation, e.g C: `\inetpub\wwwroot\bluespice` (Windows) or `/var/www/bluespice` (Linux).

Explanation for Saving Directories

It is highly recommended, to lock several directories to save them from access from external browsers, so that calling up the directory or the content delivers the HTTP status code (Forbidden).

To find out how this works with the webserver you are using, please read the documentation of your webserver software.

The following directories should be saved:

- `<bluespice-url>/cache`
- `<bluespice-url>/images`
Please keep in mind that you need to unblock the subfolder `<bluespice-url>/images/bluespice/flexiskin` afterwards, because this subfolder must be accessible.
- `<bluespice-url>/mw-config`

7. Advanced configuration

- [Configuration Folder settings.d](#)
- [Activation and deactivation of BlueSpice-extensions](#)
- [Rebuilding the search index](#)

7.1. Configuration Folder settings.d

Contents

1 Tip for theDocument	48
2 Explanation For the Folder settings.d	48

Tip for theDocument

- Please, read this manual completely and work through the single installation steps one after another.
- For editing the configuration files with a text editor, the files must be saved in UTF-8 coding without BOM (Byte Order Mark).
- The placeholder `<installpath-bluespice>` stands for the path to your BlueSpice installation, e.g C: `\inetpub\wwwroot\bluespice` (Windows) or `/var/www/bluespice` (Linux).



This document provides background information for advanced users. We recommend not to make any changes on BlueSpice, if you are not familiar with the following information.

Explanation For the Folder settings.d

Starting with BlueSpice version 2.27.1, all default settings as well as the modules of BlueSpice are outsourced. All configurations can now be found in separate files in the `/settings.d` folder.

The files in this folder integrate the standard MediaWiki extensions required for BlueSpice, perform recommended default configurations, and also integrate all BlueSpice-related extensions (free or pro).

The files in the `/settings.d` folder are automatically integrated in alphabetical order and are therefore prefixed with numbers.

If you want to add additional configurations yourself, you can save your own files here. For this, it is recommended to use the prefix `001-`.

Additional configurations, which are not packed per default but can be used, can be found at [auf github.com](#).

7.2. Activation and deactivation of BlueSpice extensions

Contents

1 Tips for this Document	49
2 Create a configuration file which will be not overriten while you update BlueSpice	49
3 Deactivation of extensions	49
4 Activation of extensions	49

In some cases you could need the possibility to activate or deactivate single extensions of BlueSpice. This document will show you how to do this.

Tips for this Document

- Please, read this manual completely and work through the single installation steps one after another.
- For editing the configuration files with a text editor, the files must be saved in UTF-8 coding without BOM (Byte Order Mark).
- The placeholder `<installpath-bluespice>` stands for the path to your BlueSpice installation, e.g C: `\inetpub\wwwroot\bluespice` (Windows) or `/var/www/bluespice` (Linux).

Create a configuration file which will be not overriten while you update BlueSpice

All BlueSpice-extensions are configured in the file `<installpath-bluespice>/extensions/BlueSpiceExtensions/BlueSpiceExtensions.default.php` by default. You should not use this file to configure these extensions because it will be overwritten while you update BlueSpice. Copy this file to `<installpath-bluespice>/extensions/BlueSpiceExtensions/BlueSpiceExtensions.local.php` and do all changes in this file.

Deactivation of extensions

Search the relevant extension in `<installpath-bluespice>/extensions/BlueSpiceExtensions/BlueSpiceExtensions.local.php`. Uncomment the line which includes the extension by typing `"/` at the beginning of the line.

Activation of extensions

If you wish to activate extensions which are deactivated please search the relevant extension in `<installpath-bluespice>/extensions/BlueSpiceExtensions/BlueSpiceExtensions.local.php`. Remove the commentation at the beginning of the line (`'#' or '/'`).

After that open a command line and switch to the folder `<installpath-bluespice>`. Execute the following command:

```
php maintenance/update.php (Linux)  
php maintenance\update.php (Windows)
```



With Windows, please take care that the [environment variables](#) are set correctly to access the php command.



With Linux, please keep in mind that after running the update.php, the [file system permissions](#) need to be adjusted again.

When the script is finished with the "Done" message, proceed to the next step.

```
...event_agent field does not exist in echo_event table, skipping modify field patch.
Modifying event_variant field of table echo_event ...done.
Modifying event_extra field of table echo_event ...done.
Modifying event_agent_ip field of table echo_event ...done.
...have etp_id field in echo_target_page table.
...have notification_bundle_base field in echo_notification table.
...echo_event table does not contain event_timestamp field.
...have eeb_event_hash field in echo_email_batch table.
...have event_page_id field in echo_event table.
...index echo_event_type already set on echo_event table.
...index echo_user_timestamp already set on echo_notification table.
Creating titlekey table...ok.
Rebuilding titlekey table...
... 1 ok.
...hitcounter table does not exist, skipping modify field patch.
Creating hit_counter_extension table ...done.
Creating hit_counter table ...done.
...page table does not contain page_counter field.
Creating bs_editnotifyconnector table ...done.
Creating bs_namespacemanager_backup_page table ...done.
Creating bs_namespacemanager_backup_revision table ...done.
Creating bs_namespacemanager_backup_text table ...done.
Adding page_content_model field to table bs_namespacemanager_backup_page ...done.
Adding rev_sha1 field to table bs_namespacemanager_backup_revision ...done.
Adding rev_content_model field to table bs_namespacemanager_backup_revision ...done.
Creating bs_permission_templates table ...done.
Creating bs_dashboards_configs table ...done.
Creating bs_usagetracker table ...done.
Creating bs_pagetemplate table ...done.
Creating bs_pageassignments table ...done.
...se_text field does not exist in bs_saferedit table, skipping modify field patch.
Creating bs_readers table ...done.
...have readers_ts field in bs_readers table.
...site_stats is populated...done.
Checking existence of old default messages...done.
Populating rev_len column
...doing rev_id from 1 to 200
Populating ar_len column
...archive table seems to be empty.
rev_len and ar_len population complete [0 revision rows, 0 archive rows].
Populating rev_sha1 column
...doing rev_id from 1 to 200
Populating ar_sha1 column
...archive table seems to be empty.
Populating ar_sha1 column legacy rows
rev_sha1 and ar_sha1 population complete [0 revision rows, 0 archive rows].
Populating img_sha1 field

Done 0 files in 0.0 seconds
Fixing protocol-relative entries in the externallinks table...
Done, 0 rows updated.
Populating fa_sha1 field from fa_storage_key

Done 0 files in 0.0 seconds
Updating *_from_namespace fields in links tables.
...doing page_id from 1 to 200
Purging caches...done.

Done in 1.6 s.
root@bluespice: /var/www/bluespice#
```

1888eb1aespice:/var/www/bluespice/

7.3. Rebuilding the search index

Contents

1 Tips for this Document	53
2 Rebuilding the search index	53

In some cases it is needed to rebuild the search index. This document will show you the steps to do this.

Tips for this Document

- Please, read this manual completely and work through the single installation steps one after another.
- The placeholder <installpath-bluespice> stands for the path to your BlueSpice installation, e.g C:\inetpub\wwwroot\bluespice (Windows) or /var/www/bluespice (Linux).

Rebuilding the search index

Please open a command line on your system and change to <installpath-bluespice>. Execute the following command:

```
php extensions/BlueSpiceExtensions/ExtendedSearch/maintenance/searchUpdate.php (Linux)
php extensions\BlueSpiceExtensions\ExtendedSearch\maintenance\searchUpdate.php (Windows)
```



With Windows, please take care that the **environment variables are set correctly to access the php command.**

Depending on the size of your contents and uploads this can take a while.

8. SyntaxHighlight GeSHi

Contents

1 Tips for this Document	54
2 SyntaxHighlight_GeSHi and Linux	54
3 SyntaxHighlight_GeSHi and Windows	54

The MediaWiki-extensions [SyntaxHighlight_GeSHi](#) is not running correctly in some cases of setups. This document will show you how to configure your system environment that you can use the extension.

Tips for this Document

- Please, read this manual completely and work through the single installation steps one after another.
- For editing the configuration files with a text editor, the files must be saved in UTF-8 coding without BOM (Byte Order Mark).
- The placeholder `<installpath-bluespice>` stands for the path to your BlueSpice installation, e.g C:\inetpub\wwwroot\bluespice (Windows) or /var/www/bluespice (Linux).

SyntaxHighlight_GeSHi and Linux

If you are using Linux as BlueSpice server it's enough make two files executable (*chmod 755*):

```
<installpath-bluespice>/extensions/SyntaxHighlight_GeSHi/pygments/create_pygmentize_bundle  
<installpath-bluespice>/extensions/SyntaxHighlight_GeSHi/pygments/pygmentize
```

For more information please refer to the article "[File System Permissions](#)".

SyntaxHighlight_GeSHi and Windows

First, please install [latest version of Python 2.7.x](#). It is recommended to use the standard installation path (C:\Python27).

After that please open your windows command line and change to the subfolder "Scripts" in the Python installation path. Install the needed package "pygments" by using this command:

```
pip.exe install pygments
```

Now tell your BlueSpice installation where the pygmentize.exe can be found by setup this variable in your LocalSettings.php:

```
$wgPygmentizePath = "c:\\Python27\\Scripts\\pygmentize.exe";
```

At the end please take care that the temporary directory of your PHP installation (default: C:\Windows\Temp) is fully writable by your webserver.

With these steps you should have a working system setup to use the SyntaxHighlight_GeSHi without problem.